

DECLARATION OF CONFORMITY

REGISTRATION OF BALL VALVES

2022-07142

ABSA
SAFETY CODES ACT - PROVINCE OF ALBERTA
ACCEPTED: CC22935. 2
See acceptance letter for conditions of registration.
Date: 2023-01-31 By: Keith Rudolph
KEITH RUDOLPH, P. Eng
DOP: D00608862

This stamp and signature have been affixed electronically to this registered design as required by Section 20(1) of the Pressure Equipment Safety Regulation, in accordance with the Electronic Transactions Act.

Declaration No.: (document nr. as issued by the manufacturer)	VIZA CRN 001-20230131	Revision:	R2
Manufacturer	(Name and Address) KunShan Viza Valve Co., Ltd. 18th, Jinlu Road, Jinxi Town, Kunshan City, Jiangsu China		

Table 1 Scope of Ball Valve Designs

Item No.	Type / Model	Product Description	Material of Construction	MDMT	Rated Pressure		References: Catalog (pages) or Drawing(s)
					At Ambient Temperature	At Maximum Temperature	
1	TF	3pc body forged trunnion mounted ball valve	Refer to annex 2 in page 1	Refer to annex 2 in page 2	Refer to annex 2 in page 3&4	Refer to annex 2 in page 3&4	2"-48" TF Series
2	TC	2pc body casting trunnion mounted ball valve	Refer to annex 2 in page 1	Refer to annex 2 in page 2	Refer to annex 2 in page 3&4	Refer to annex 2 in page 3&4	2"-48" TC Series
3	FF	2pc body forged floating ball valve	Refer to annex 2 in page 1	Refer to annex 2 in page 2	Refer to annex 2 in page 3&4	Refer to annex 2 in page 3&4	1/2"-10" FF Series
4	FC	2pc body casting floating ball valve	Refer to annex 2 in page 1	Refer to annex 2 in page 2	Refer to annex 2 in page 3&4	Refer to annex 2 in page 3&4	1/2"-10" FC Series

Table 2 Codes, Standards, Guidelines, and Other Applicable Documents

Item No.	Title of Code(s), Standard(s), Guideline(s), or Other Applicable Document(s)	Edition / Revision	Item No.	Title of Code(s), Standard(s), Guideline(s), or Other Applicable Document(s)	Edition / Revision
1	ASME B16.34/ API 6D	ASME B16.34-2020 API 6D-2021-25th	3	ASME B16.34/ API 6D	ASME B16.34-2020 API 6D-2021-25th
2	ASME B16.34/ API 6D	ASME B16.34-2020 API 6D-2021-25th	4	ASME B16.34/ API 6D	ASME B16.34-2020 API 6D-2021-25th

Table 3 Quality Program Verification and Manufacturing Sites

Item No.	Location(s) Plant Name and Address / Site(s)	Quality Program Certificate Number	Expiry Date	Verifying Organization
1	KunShan Viza Valve Co., Ltd. 18th, Jinlu Road, Jinxi Town, Kunshan City, Jiangsu China	ISO 9001:2015- 1476	June 8.2024	American Petroleum Institute
2	KunShan Viza Valve Co., Ltd. 18th, Jinlu Road, Jinxi Town, Kunshan City, Jiangsu China	API 6D-6D-0561	June 8.2024	American Petroleum Institute

A copy of the Quality Certificate from each manufacturing site must be included.

Remarks	(other relevant information)
----------------	------------------------------

As a senior official of the manufacturer, having responsibility for the conformity and regulatory compliance of the fitting, I hereby declare that the statements made in this declaration of conformity are true and accurate.

I also declare that a conformity assessment has been completed to the extent necessary for validation and verification, and declare that the fitting design and construction are in conformity with the requirements of CSA B51, the applicable codes, and standards and other applicable documents as listed in table 2 of this document.

I further declare that there is a process in place for retention, custody, maintenance, availability, and control of this declaration of conformity, for the duration of a valid Canadian Registration Number and no less than 10 years from the issuance of this declaration of conformity, for the fittings covered by this declaration.

Signed for and on behalf of KunShan Viza Valve Co., Ltd. in the KunShan of JiangSu, China
(Manufacturer) (City) (State / Province, Country)

[Signature] Sales Director XiaoMing Tang
(Name, please print) (Function or Title) (Signature of Declarer)

2023.1.31
(Date)

2023.1.31



Scope of Products Applied for CRN KunShan Viza Valve Co.,Ltd.

Doc. No.: SPA-CRN-001
Rev. No.: 2

Item No.	Valve Type	Valve Code	Size	Class(lb)	Material	Design standard
1	Ball	TF	2"-48"	150-600	ASTM A105, A350 LF2,A182 F304,F304L,F316,F316L	API 6D, ASME B16.34,
1-a	Ball	TF	2"-36"	900	ASTM A105, A350 LF2,A182 F304,F304L,F316,F316L	
1-b	Ball	TF	2"-24"	1500	ASTM A105, A350 LF2,A182 F304,F304L,F316,F316L	
1-c	Ball	TF	2"-12"	2500	ASTM A105, A350 LF2,A182 F304,F304L,F316,F316L	
2	Ball	TC	2"-48"	150-600	ASTM A216 WCB,WCC, A352 LCB,LCC, A351 CF3,CF3M,CF8,CF8M	
3	Ball	FF	1/2"-10"	150-300	ASTM A105, A350 LF2,A182 F304,F304L,F316,F316L	
3-a	Ball	FF	1/2"-4"	600	ASTM A105, A350 LF2,A182 F304,F304L,F316,F316L	
3-b	Ball	FF	1/2"-3"	900	ASTM A105, A350 LF2,A182 F304,F304L,F316,F316L	
3-c	Ball	FF	1/2"-2"	1500	ASTM A105, A350 LF2,A182 F304,F304L,F316,F316L	
4	Ball	FC	1/2"-12"	150	ASTM A216 WCB,WCC, A352 LCB,LCC, A351 CF3,CF3M,CF8,CF8M	
4-a	Ball	FC	1/2"-10"	300	ASTM A216 WCB,WCC, A352 LCB,LCC, A351 CF3,CF3M,CF8,CF8M	

Prepared by:

2023.1.31



Approved by:

2023.1.31

This stamp and signature have been affixed electronically to this registered design as required by Section 20(1) of the Pressure Equipment Safety Regulation, in accordance with the Electronic Transactions Act.



**MDMT of Products Material Applied for CRN
KunShan Viza Valve Co.,Ltd.**

Doc. No.: SPA-CRN-002
Rev. No.: 2

ASTM-Casting	ASTM-Forged	Temperature Range(° C)
Carbon Steel		
A216 WCB	A105	-29~425
Low Temperature Carbon Steel		
A352 LCB	A350 LF2	-46~345
A352 LCC	A350 LF2	-46~345
Austenitic Stainless Steel		
A351 CF8	A182 F304	-46~538
A351 CF8M	A182 F316	-46~538
A351 CF3	A182 F304L	-46~425
A351 CF3M	A182 F316L	-46~455

Prepared by:

2023.1.31

Approved by:

2023.1.31



**P-T Rating of Products Material Applied for CRN
KunShan Viza Valve Co.,Ltd.**

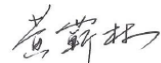
Doc. No.: SPA-CRN-003

Rev. No.: 2

ASTM-Casting	ASTM-Forged	Class(lb)	P-T Rating at ambient temperature (Kpag/°C)	P-T Rating at Maximum temperature (Kpag/° C)
Carbon Steel Group				
A216 WCB	A105	150	1960 / -29°C	550 / 425°C
		300	5110 / -29°C	2880 / 425°C
		600	10210 / -29°C	5750 / 425°C
		900	15320 / -29°C	8630 / 425°C
		1500	25530 / -29°C	14380 / 425°C
		2500	42550 / -29°C	23970 / 425°C
Low Temperature Carbon Steel Group				
A352 LCB	-	150	1840 / -29°C	860 / 345°C
		300	4800 / -29°C	3660 / 345°C
		600	9600 / -29°C	7330 / 345°C
		900	14410 / -29°C	10990 / 345°C
		1500	24010 / -29°C	
		2500	40010 / -29°C	30530 / 345°C
Low Temperature Carbon Steel Group				
-	A350 LF2	150	1960 / -29°C	550 / 425°C
		300	5110 / -29°C	2880 / 425°C
		600	10210 / -29°C	5750 / 425°C
		900	15320 / -29°C	8630 / 425°C
		1500	25530 / -29°C	14380 / 425°C
		2500	42550 / -29°C	23970 / 425°C
Austenitic Stainless Steel Group-2.1				
A351 CF8	A182 F304	150	1900 / -29°C	140 / 538°C
		300	4960 / -29°C	2440 / 538°C
		600	9930 / -29°C	4890 / 538°C
		900	14890 / -29°C	7330 / 538°C
		1500	24820 / -29°C	12210 / 538°C
		2500	41370 / -29°C	20360 / 538°C
Austenitic Stainless Steel Group-2.1				
		150	1900 / -29°C	550 / 425°C

A351 CF3	-	300	4960 / -29°C	2800 / 425°C
		600	9930 / -29°C	5600 / 425°C
		900	14890 / -29°C	8400 / 425°C
		1500	24820 / -29°C	14000 / 425°C
		2500	41370 / -29°C	23330 / 425°C
Austenitic Stainless Steel Group-2.2				
A351 CF8M	A182 F316	150	1900 / -29°C	140 / 538°C
		300	4960 / -29°C	2520 / 538°C
		600	9930 / -29°C	5000 / 538°C
		900	14890 / -29°C	7520 / 538°C
		1500	24820 / -29°C	12550 / 538°C
2500	41370 / -29°C	20890 / 538°C		
Austenitic Stainless Steel Group-2.2				
A351 CF3M	-	150	1900 / -29°C	440 / 455°C
		300	4960 / -29°C	2880 / 455°C
		600	9930 / -29°C	5760 / 455°C
		900	14890 / -29°C	8640 / 455°C
		1500	24820 / -29°C	14400 / 455°C
2500	41370 / -29°C	24010 / 455°C		
Austenitic Stainless Steel Group-2.3				
-	A182 F304L, 316L	150	1590 / -29°C	550 / 425°C
		300	4140 / -29°C	2390 / 425°C
		600	8270 / -29°C	4770 / 425°C
		900	12410 / -29°C	7160 / 425°C
		1500	20680 / -29°C	11930 / 425°C
2500	34470 / -29°C	19880 / 425°C		

Prepared by:

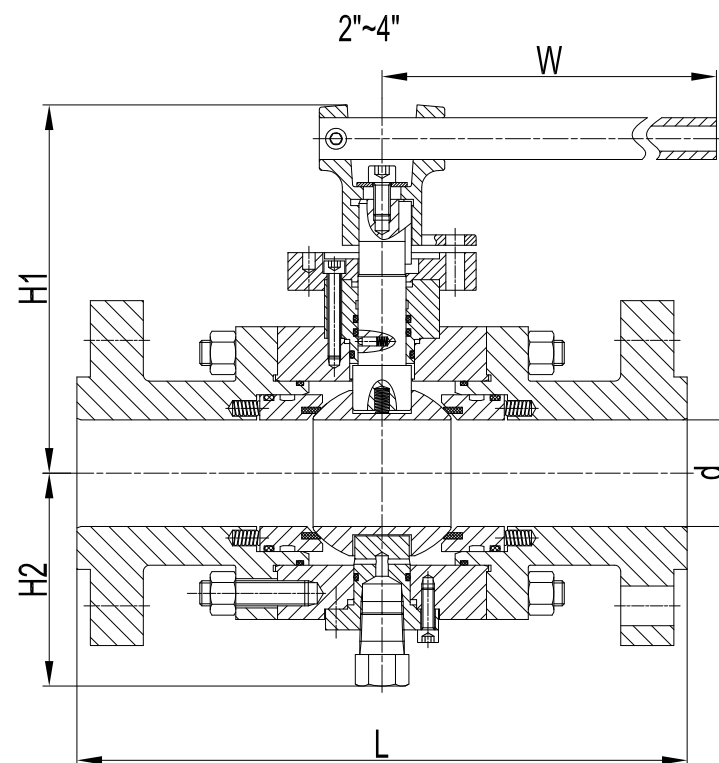
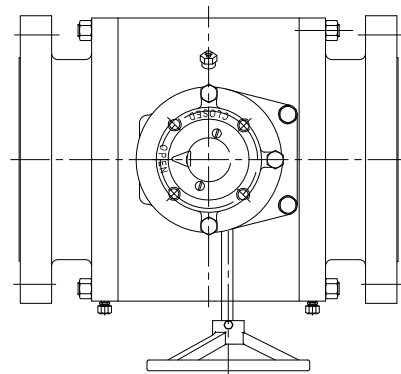
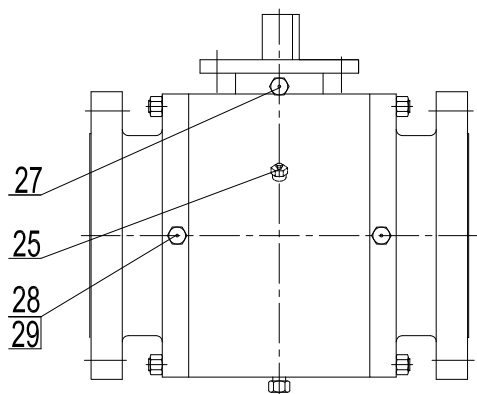
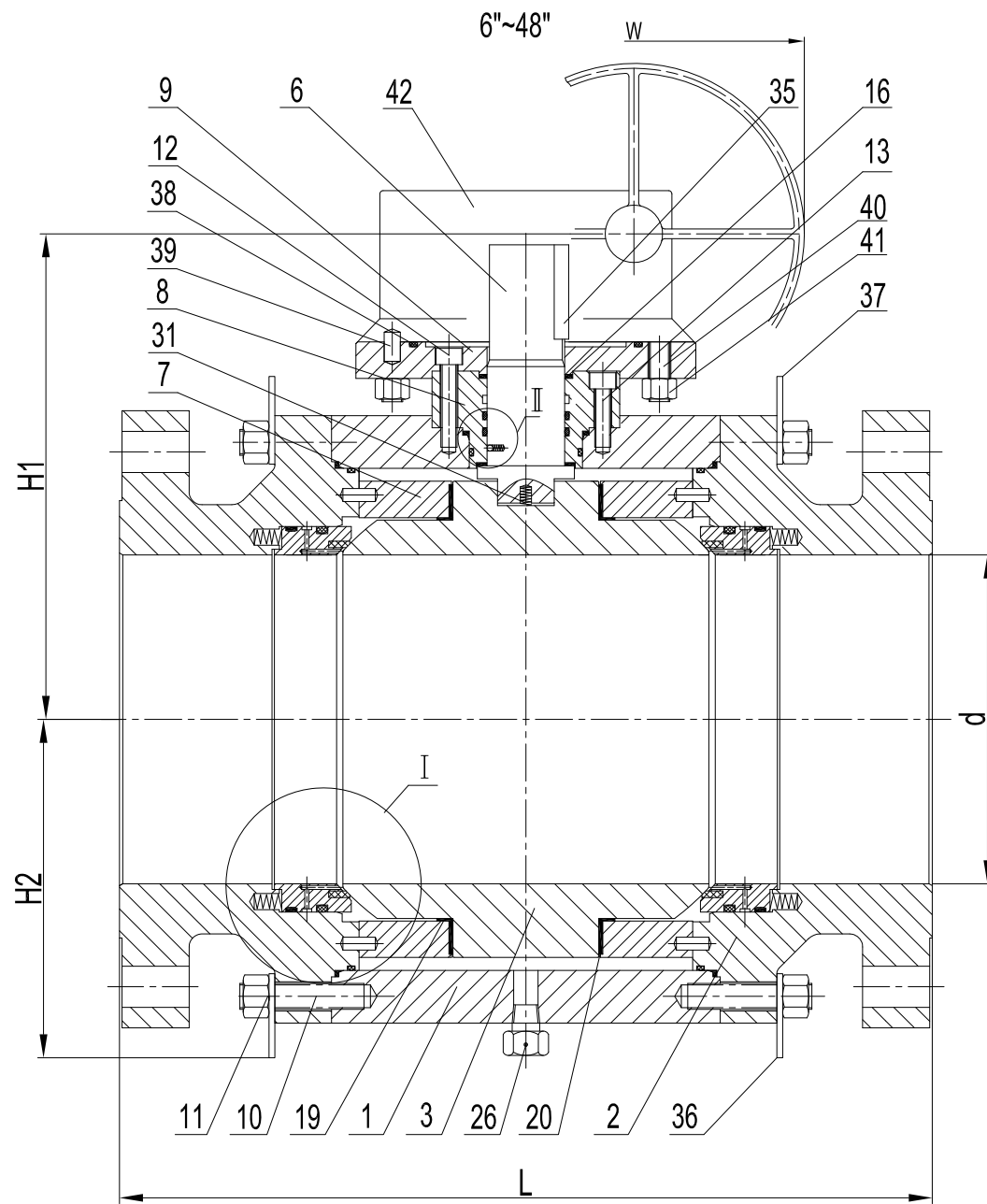
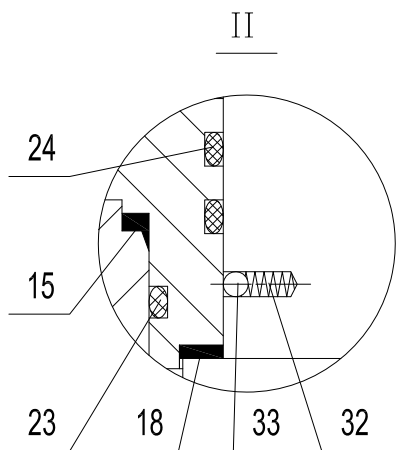
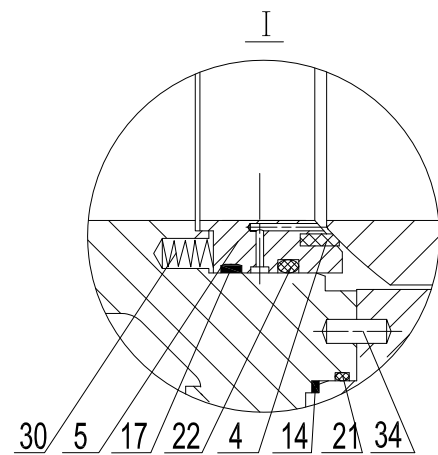


2023.1.31

Approved by:



2023.1.31



NOTES:

1. The valve is designed in accordance with API 6D.
2. The inspection and test of the valve shall be in accordance with API 6D.
3. The marking of the valve shall be in accordance with MSS SP-25.

No.	PARTS NAME	MATERIAL	REMARK
42	GEAR	CARBON STEEL	
41	NUT	CARBON STEEL	
40	STUD	CARBON STEEL	
39	PIN	CARBON STEEL	
38	O-RING	VITON	
37	LIFTING LUGS	CARBON STEEL	
36	SUPPORTING FEET	CARBON STEEL	
35	KEY	CARBON STEEL	
34	ALIGNMENT PIN	STAINLESS STEEL	
33	GROUNDING PLUNGER	STAINLESS STEEL	
32	ANTISTATIC SPRING	INCONEL X-750	
31	ANTISTATIC SPRING	INCONEL X-750	
30	SEAT SPRING	INCONEL X-750	
29	CHECK VALVE	STAINLESS STEEL	
28	SEAT INJECTION	STAINLESS STEEL	
27	STEM INJECTION	STAINLESS STEEL	
26	DRAIN	STAINLESS STEEL	
25	VENT VALVE	STAINLESS STEEL	
24	O-RING	VITON	
23	O-RING	VITON	
22	O-RING	VITON	
21	O-RING	VITON	
20	BEARING	SS+PTFE	
19	WASHER	SS+PTFE	
18	THRUST WASHER	SS+PTFE	
17	SEAT FIRESAFE PACKING	BRAIDED GRAPHITE	
16	STEM FIRESAFE PACKING	GRAPHITE	
15	GLAND GASKET	GRAPHITE	
14	BODY GASKET	BRAIDED GRAPHITE	
13	SCREW	CARBON STEEL	
12	SCREW	CARBON STEEL	
11	BODY NUT	ASTM A194 2H	
10	BODY STUD	ASTM A193 B7	
9	TOP FLANGE	CARBON STEEL	
8	GLAND FLANGE	ASTM A105	
7	TRUNNION SUPPORT	CARBON STEEL	
6	STEM	AISI 4140+ENP	
5	SEAT RING	ASTM A105+ENP	
4	SEAT INSERT	RPTFE	
3	BALL	ASTM A105+ENP	
2	ADAPTER	ASTM A105N	
1	BODY	ASTM A105N	
No.	PARTS NAME	MATERIAL	REMARK
Rev.	0	Model	TF Series
Date	2022-11-08	Description	3 Pcs Forged Body Trunnion Mounted Ball Valve
Customer	0		
Order No	0		

Full Bore Class 150							
Size in	d mm	L mm	H1 mm	H2 mm	W mm	t min mm	Weight Kg
2	51	178	176	96	350	5.6	16
3	76	203	220	119	400	6.1	30
4	102	229	241	139	450	6.5	43
6	152	394	230	167	*300	7.3	132
8	203	457	285	210	*400	8.1	233
10	254	533	335	251	*400	8.9	402
12	305	610	384	290	*400	9.8	599
14	337	686	414	319	*610	10.2	829
16	387	762	454	354	*610	11.1	1115
18	438	864	498	397	*610	11.9	1577
20	489	914	623	435	*610	12.7	2001
22	538	991	662	464	*610	13.5	2535
24	591	1067	635	515	*700	14.5	3188
26	635	1143	750	550	*760	15.1	3862
28	686	1245	753	585	*760	15.9	4429
30	737	1295	895	656	*760	16.8	5782
32	781	1372	900	659	*760	17.6	6356
34	832	1473	940	700	*760	18.4	7911
36	876	1524	975	735	*760	19.0	8712
40	976	1727	1046	810	*760	20.7	11737
42	1020	1987	1074	835	*800	21.7	12200
48	1168	2120	1722	1040	*800	23.9	18400


Full Bore Class 300							
Size in	d mm	L mm	H1 mm	H2 mm	W mm	t min mm	Weight Kg
2	51	216	177	89	400	6.2	23
3	76	283	220	119	450	7.0	42
4	102	305	243	137	500	8.0	60
6	152	403	228	167	*305	9.7	154
8	203	502	286	206	*400	11.3	282
10	254	568	335	252	*500	13.0	449
12	305	648	391	289	*610	14.6	637
14	337	762	422	323	*610	15.6	1005
16	387	838	467	367	*610	17.3	1416
18	438	914	635	411	*610	18.9	1908
20	489	991	684	450	*700	20.6	2425
22	538	1092	637	488	*700	22.2	3213
24	591	1143	674	519	*760	24.2	3767
28	686	1346	794	602	*760	27.2	5618
30	737	1397	810	655	*760	28.8	7396
32	781	1524	872	685	*800	30.5	8469
34	832	1626	900	720	*800	32.1	9908
36	876	1727	1031	740	*800	33.4	10771
40	976	1956	1109	818	*800	36.7	13632
42	1020	2032	1133	848	*800	38.7	13000
48	1168	2170	1346	969	*1016	43.3	19000

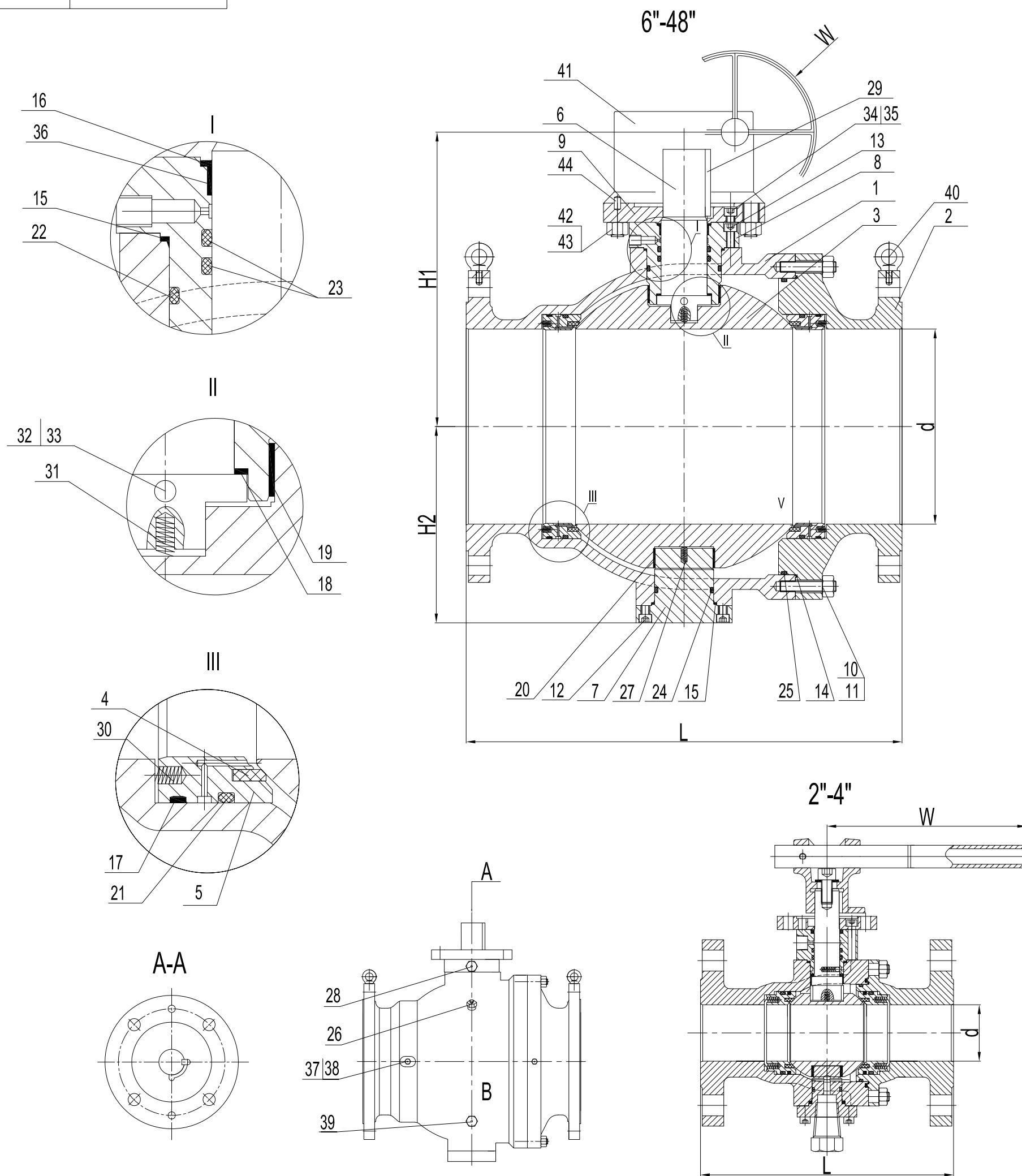
Full Bore Class 600							
Size in	d mm	L mm	H1 mm	H2 mm	W mm	t min mm	Weight Kg
2	51	292	176	100	400	6.5	27
3	76	356	223	125	500	8.2	61
4	102	432	268	148	650	10.2	107
6	152	559	259	181	*400	13.6	256
8	203	660	304	225	*500	17.0	428
10	254	787	366	278	*610	20.3	741
12	305	838	412	323	*610	23.7	1096
14	337	889	521	339	*610	25.7	1300
16	387.4	991	609	398	*610	29.1	2022
18	438.2	1092	620	443	*700	32.5	2732
20	489	1194	612	490	*760	35.9	3666
22	538	1295	686	513	*760	39.2	3816
24	591	1397	741	555	*810	43.3	5373
28	685	1549	966	643	*810	49.4	8076
30	737	1651	1018	688	*810	52.7	9664
32	781	1778	900	775	*1016	56.1	12030
34	832	1930	940	820	*1016	59.5	14399
36	874	2083	1177	800	*1016	62.2	16013
40	976	2159	1267	883	*1219	68.9	20553
42	1020	2175	1213	918	*1219	73.0	16400
48	1168	2435	1765	1070	*1219	82.4	24200

Full Bore Class 900							
Size in	d mm	L mm	H1 mm	H2 mm	W mm	t min mm	Weight Kg
2	51	368	216	115	450	8.3	60
3	76	381	255	125	650	10.9	77
4	102	457	217	165	*406	14.0	153
6	152	610	274	195	*400	19.3	350
8	203	737	328	245	*610	24.5	596
10	254	838	485	302	*610	29.7	811
12	305	965	517	334	*610	34.9	1388
14	324	1029	588	369	*710	37.0	1881
16	375	1130	613	426	*710	42.2	1999
18	425	1219	635	458	*760	47.5	3456
20	473	1321	810	510	*812	52.1	4760
24	572	1549	954	598	*800	63.1	5497
28	667	1753	1063	668	*1016	72.5	10202
30	712	1880	1085	713	*1016	77.8	11442
32	760	2032	1036	752	*1219	82.0	17462
36	855	2286	1130	836	*1219	92.4	20154

Full Bore Class 1500							
Size in	d mm	L mm	H1 mm	H2 mm	W mm	t min mm	Weight Kg
2	51	368	216	105	450	12.7	68
3	76	470	270	132	650	17.3	142
4	102	546	244	159	*406	22.8	219
6	146	705	308	200	*610	30.2	487
8	194	832	366	262	*610	39.4	933
10	241	991	479	294	*710	48.6	1442
12	289	1130	551	360	*710	56.0	2348
14	318	1257	558	390	*760	61.6	3066
16	362	1384	657	462	*760	70.8	4563
18	406	1537	823	490	*812	78.2	5916
20	456	1664	933	596	*1016	87.4	4497
24	546	1944	1068	654	*1016	104.0	7151

Full Bore Class 2500							
Size in	d mm	L(RTJ) mm	H1 mm	H2 mm	W mm	t min mm	Weight Kg
2	44.5	454	247	108	650	17.9	115
3	64	584	241	152	*400	24.7	243
4	89	683	270	172	*500	33.2	389
6	133	927	365	233	*610	50.3	1145
8	181	1038	561	305	*610	67.3	1675
10	223	1292	600	370	*710	80.9	2871
12	265	1445	638	465	*760	94.6	3267

Rev.	0	Model	TF Series
Date	2022-11-08	Description	3 Pcs Forged Body Trunnion Mounted Ball Valve
Customer	0		
Order No	0		




NOTES:
 1. The valve is designed in accordance with API 6D.
 2. The inspection and test of the valve shall be in accordance with API 6D.
 3. The marking of the valve shall be in accordance with mss SP-25.

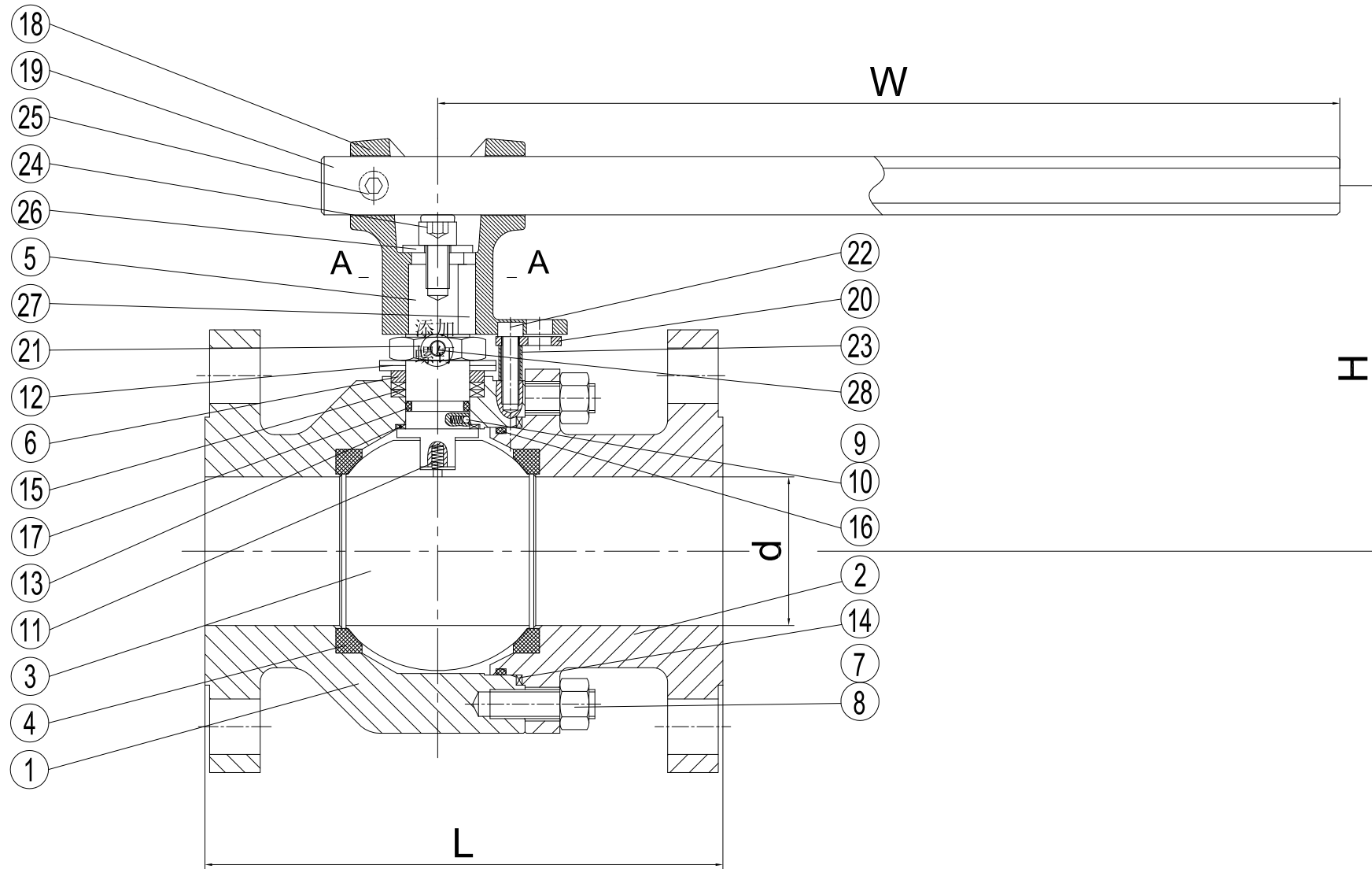
44	PIN	CARBON STEEL	
43	NUT	CARBON STEEL	
42	STUD	CARBON STEEL	
41	GEAR	COMPONENT	
40	EYE BOLT	CARBON STEEL	
39	PLUG	STAINLESS STEEL	
38	CHECK VALVE	STAINLESS STEEL	
37	SEAT INJECTION	STAINLESS STEEL	
36	BEARING	SS+COPPER+PTFE	
35	SCREW	CARBON STEEL	
34	ALIGNMENT PIN	CARBON STEEL	
33	GROUNDING PLUNGER	STAINLESS STEEL	
32	ANTISTATIC SPRING	INCONEL X-750	
31	ANTISTATIC SPRING	INCONEL X-750	
30	SEAT SPRING	INCONEL X-750	
29	KEY	CARBON STEEL	
28	STEM INJECTION	STAINLESS STEEL	
27	ANTISTATIC SPRING	INCONEL X-750	
26	VENT VALVE	STAINLESS STEEL	
25	O-RING	VITON	
24	O-RING	VITON	
23	O-RING	VITON	
22	O-RING	VITON	
21	O-RING	VITON	
20	BEARING	SS+COPPER+PTFE	
19	BEARING	SS+COPPER+PTFE	
18	THRUST WASHER	SS+COPPER+PTFE	
17	SEAT FIRESAFE PACKING	BRAIDED GRAPHITE	
16	STEM FIRESAFE PACKING	GRAPHITE	
15	GLAND GASKET	GRAPHITE	
14	BODY GASKET	BRAIDED GRAPHITE	
13	SCREW	CARBON STEEL	
12	SCREW	CARBON STEEL	
11	BODY NUT	ASTM A194-2H	
10	BODY STUD	ASTM A193-B7	
9	TOP FLANGE	CARBON STEEL	
8	GLAND FLANGE	ASTM A105	
7	TRUNNION	ASTM A105	
6	STEM	AISI 4140/ENP	
5	SEAT RING	ASTM A105/ENP	
4	SEAT INSERT	RPTFE	
3	BALL	ASTM A105/ENP	
2	ADAPTER	ASTM A216 WCB	
1	BODY	ASTM A216 WCB	
No.	PARTS NAME	MATERIAL	REMARK
Rev.	0	Man.FIG.	TC Series
Date	2020-06-10	Type	2 Pcs Casting Body Trunnion Mounted Ball Valve
Customer	0		
Order No	0		

Full Bore Class 150							
Size in	d mm	L mm	H1 mm	H2 mm	W mm	t min mm	Weight Kg
2	51	178	179	99	350	5.6	21
3	76	203	223	122	400	6.1	35
4	102	229	244	142	450	6.5	48
6	152	394	233	170	*300	7.3	137
8	203	457	288	213	*400	8.1	238
10	254	533	338	254	*400	8.9	407
12	305	610	387	293	*400	9.8	604
14	337	686	417	322	*610	10.2	834
16	387	762	457	357	*610	11.1	1120
18	438	864	501	400	*610	11.9	1582
20	489	914	626	438	*610	12.7	2006
22	538	991	665	467	*610	13.5	2540
24	591	1067	638	518	*700	14.5	3193
26	635	1143	753	553	*760	15.1	3867
28	686	1245	756	588	*760	15.9	4434
30	737	1295	898	659	*760	16.8	5787
32	781	1372	903	662	*760	17.6	6361
34	832	1473	943	703	*760	18.4	7916
36	876	1524	978	738	*760	19.0	8717
40	976	1727	1049	813	*760	20.7	11742
42	1020	1987	1077	838	*800	21.7	12205
48	1168	2120	1725	1043	*800	23.9	18405

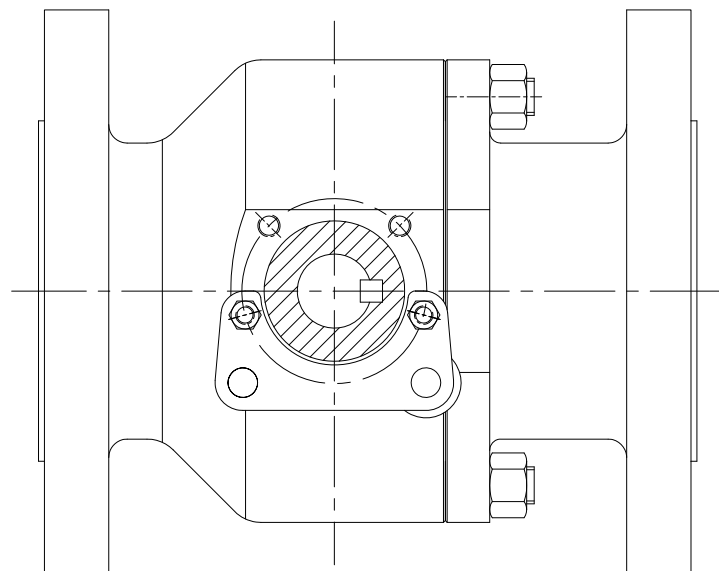
Full Bore Class 300							
Size in	d mm	L mm	H1 mm	H2 mm	W mm	t min mm	Weight Kg
2	51	216	180	92	400	6.2	28
3	76	283	223	122	450	7.0	47
4	102	305	246	140	500	8.0	65
6	152	403	231	170	*305	9.7	159
8	203	502	289	209	*400	11.3	287
10	254	568	338	255	*500	13.0	454
12	305	648	394	292	*610	14.6	642
14	337	762	425	326	*610	15.6	1010
16	387	838	470	370	*610	17.3	1421
18	438	914	638	414	*610	18.9	1913
20	489	991	687	453	*700	20.6	2430
22	538	1092	640	491	*700	22.2	3218
24	591	1143	677	522	*760	24.2	3772
28	686	1346	797	605	*760	27.2	5623
30	737	1397	813	658	*760	28.8	7401
32	781	1524	875	688	*800	30.5	8474
34	832	1626	903	723	*800	32.1	9913
36	876	1727	1034	743	*800	33.4	10776
40	976	1956	1112	821	*800	36.7	13637
42	1020	2032	1136	851	*800	38.7	13005
48	1168	2170	1349	972	*1016	43.3	19005

Full Bore Class 600							
Size in	d mm	L mm	H1 mm	H2 mm	W mm	t min mm	Weight Kg
2	51	292	179	103	400	6.5	32
3	76	356	226	128	500	8.2	66
4	102	432	271	151	650	10.2	112
6	152	559	262	184	*400	13.6	261
8	203	660	307	228	*500	17.0	433
10	254	787	369	281	*610	20.3	746
12	305	838	415	326	*610	23.7	1101
14	337	889	524	342	*610	25.7	1305
16	387.4	991	612	401	*610	29.1	2027
18	438.2	1092	623	446	*700	32.5	2737
20	489	1194	615	493	*760	35.9	3671
22	538	1295	689	516	*760	39.2	3821
24	591	1397	744	558	*810	43.3	5378
28	685	1549	969	646	*810	49.4	8081
30	737	1651	1021	691	*810	52.7	9669
32	781	1778	903	778	*1016	56.1	12035
34	832	1930	943	823	*1016	59.5	14404
36	874	2083	1180	803	*1016	62.2	16018
40	976	2159	1270	886	*1219	68.9	20558
42	1020	2175	1216	921	*1219	73.0	16405
48	1168	2435	1768	1073	*1219	82.4	24205

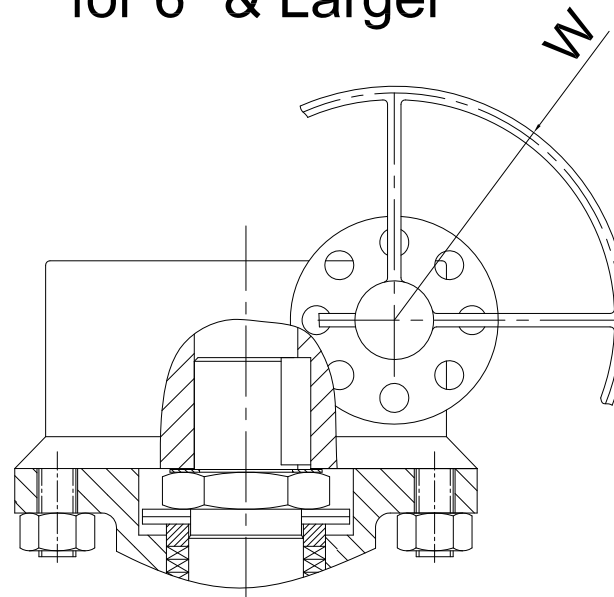
Rev.	0	Man.FIG.	TC Series
Date	2020-06-10	Type	2 Pcs Casting Body Trunnion Mounted Ball Valve
Customer	0		
Order No	0		



A - A




Gear Standard for 6" & Larger



SPECIFICATION

- 1.The valve is designed in accordance with API 6D.
- 2.The inspection and test of the valve shall be in accordance with API 598.
- 3.The marking of the valve shall be in accordance with MSS SP-25.

28	**Screw	Stainless Steel
27	Key	Carbon Steel
26	Washer	Carbon Steel
25	Screw	Carbon Steel
24	Screw	Carbon Steel
23	Pipe	Carbon Steel
22	Screw	Carbon Steel
21	Nut	Carbon Steel
20	Lock Plate	Carbon Steel
19	Lever Pipe	Carbon Steel Zinc Plated
18	Lever Head	Carbon Steel
17	*O-Ring	Viton
16	*O-Ring	Viton
15	*Packing	Graphite
14	*Gasket	Graphite
13	Thrust Washer	PTFE
12	Dish Spring	Alloy Steel
11	Antistatic Spring	INCONEL X-750
10	Antistatic Spring	INCONEL X-750
9	Steel Ball	Stainless Steel
8	Body Nut	ASTM A194-2H
7	Body Stud	ASTM A193-B7
6	Gland Ring	ASTM A276-410
5	Stem	AISI 4140/ENP
4	Seat Ring	PTFE/Nylon/PEEK
3	Ball	ASTM A105N/ENP
2	Adapter	ASTM A105N
1	Body	ASTM A105N

NO.	PART	A105/ENP	
Rev.	0	Man.FIG.	FF Series
Date	2022-10-28	Type	2 Pcs Forged Body Trunnion Mounted Ball Valve
Customer	0		
Order No	0		


Full Bore Class 150						
Size in	d mm	L mm	H mm	W mm	t min mm	Weight Kg
1/2	13	108	85	*160	3.3	2.8
3/4	19	117	93	*160	3.7	3.7
1	25	127	112	*180	4.1	5.3
1-1/2	38	165	125	*240	4.9	8.3
2	51	178	126	350	5.6	11.2
2-1/2	64	191	139	400	5.8	18.4
3	76	203	164	400	5.9	23.0
4	102	229	185	450	6.5	39.3
6	152	394	270	**300	7.3	90
8	203	457	360	**400	8.1	140
10	254	533	410	**400	8.9	230

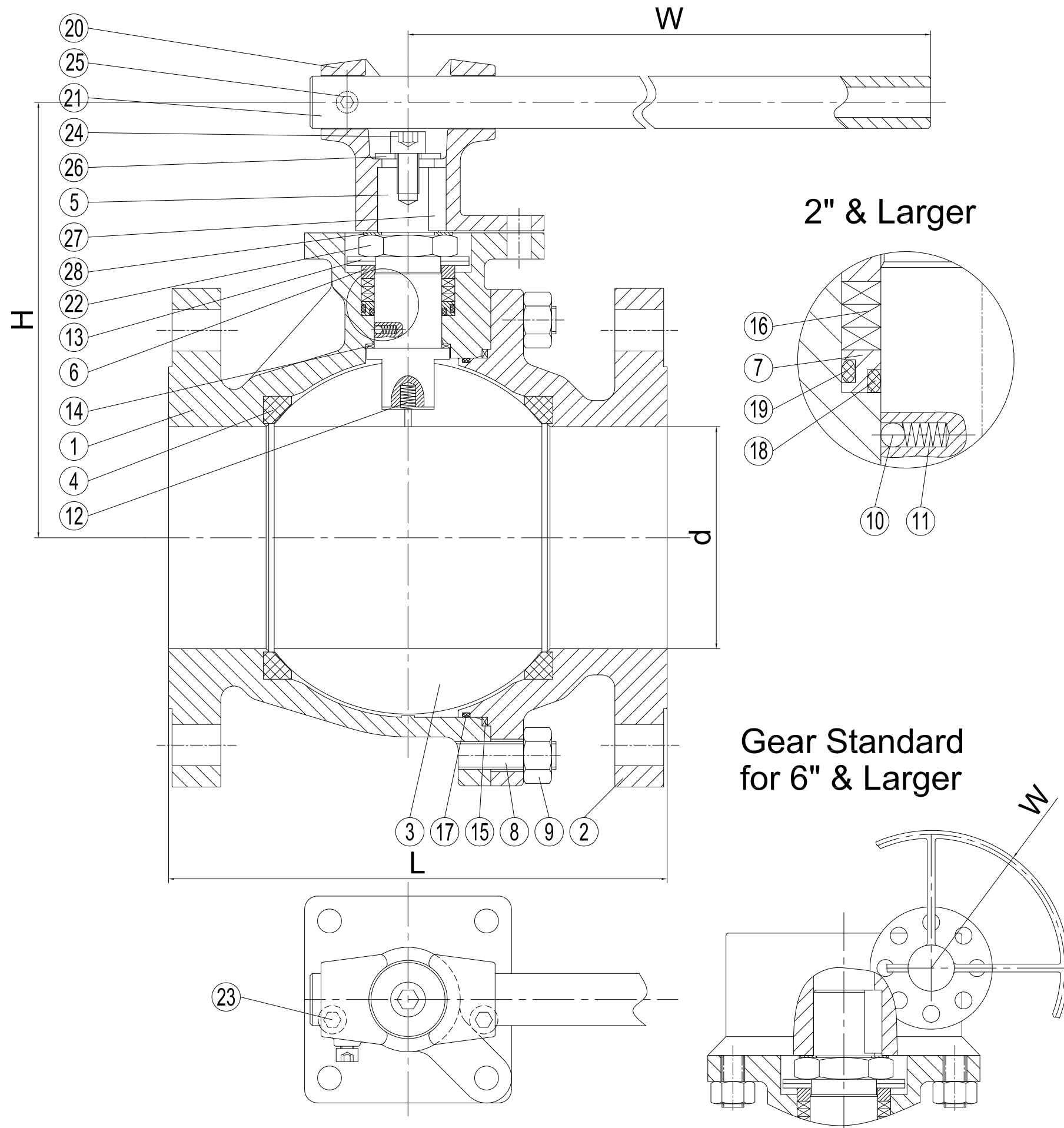
Full Bore Class 300						
Size in	d mm	L mm	H mm	W mm	t min mm	Weight Kg
1/2	13	140	85	*160	3.5	3.0
3/4	19	152	93	*160	4.0	4.0
1	25	165	112	*180	4.4	6.6
1-1/2	38	190	125	*240	5.3	12.9
2	51	216	126	400	6.2	18.9
2-1/2	64	241	139	400	6.5	28
3	76	283	166	450	7.0	39
4	102	305	185	500	8.0	60
6	152	403	275	**300	9.7	130
8	203	502	360	**400	11.3	195
10	254	568	410	**400	13.0	290

Full Bore Class 600						
Size in	d mm	L mm	H mm	W mm	t min mm	Weight Kg
1/2	13	165	85	*160	3.8	3.5
3/4	19	191	93	*180	4.3	5.0
1	25	216	112	*240	4.9	7.5
1-1/2	38	241	125	350	5.6	15
2	51	292	130	400	6.5	23
3	76	356	170	500	8.2	48
4	102	432	216	700	10.2	80

Full Bore Class 900						
Size in	d mm	L mm	H mm	W mm	t min mm	Weight Kg
1/2	13	216	85	*160	4.5	5.0
3/4	19	229	93	*180	5.4	8.0
1	25	254	115	*240	6.4	10.0
1-1/2	38	305	128	400	7.2	20
2	51	368	148	450	8.3	25
3	76	381	196	600	10.9	50

Full Bore Class 1500						
Size in	d mm	L mm	H mm	W mm	t min mm	Weight Kg
1/2	13	216	85	*160	5.3	5.0
3/4	19	229	112	*180	6.4	8.0
1	25	254	115	*240	7.5	10.0
1-1/2	38	305	123	400	9.9	20
2	51	368	132	450	12.7	30

Rev.	0	Man.FIG.	FF Series
Date	2022-10-28	Type	2 Pcs Forged Body Trunnion Mounted Ball Valve
Customer	0		
Order No	0		



SPECIFICATION


- 1.The valve is designed in accordance with API 6D.
- 2.The inspection and test of the valve shall be in accordance with API 598.
- 3.The marking of the valve shall be in accordance with MSS SP-25.

28	**Retainer	Carbon Steel
27	Key	Carbon Steel
26	Washer	Carbon Steel
25	Screw	Carbon Steel
24	Screw	Carbon Steel
23	Position Screw	Carbon Steel
22	Nut	Carbon Steel
21	Lever Pipe	Carbon Steel Zinc Plated
20	Lever Head	Carbon Steel
19	*O-Ring(2"&Larger)	Viton
18	*O-Ring	Viton
17	*O-Ring	Viton
16	*Packing	Graphite
15	*Gasket	Graphite
14	Thrust Washer	PTFE
13	Dish Spring	Alloy Steel
12	Antistatic Spring	INCONEL X-750
11	Antistatic Spring	INCONEL X-750
10	Steel Ball	Stainless Steel
9	Body Nut	ASTM A194-2H
8	Body Stud	ASTM A193-B7
7	O-Ring Box(2"&Larger)	ASTM A276-410
6	Gland Ring	ASTM A276-410
5	Stem	AISI 4140/ENP
4	Seat Ring	PTFE
3	Ball	ASTM A105N/ENP
2	Adapter	ASTM A216-WCB
1	Body	ASTM A216-WCB

NO.	PART	WCB/ENP
Rev.	0	Man.FIG. FC Series
Date	2022-10-28	Type 2 Pcs Casting Body Body Floating Ball Valve
Customer	0	
Order No	0	

Full Bore Class 150						
Size	d	L	H	W	t min	Weight
in	mm	mm	mm	mm	mm	Kg
1/2	13	108	85	160	3.3	2.2
3/4	19	117	93	160	3.7	2.7
1	25	127	112	180	4.1	4.5
1-1/2	38	165	132	240	4.9	7.0
2	51	178	138	350	5.6	9.5
2-1/2	62	191	155	400	5.8	15
3	76	203	175	400	5.9	19
4	102	229	200	450	6.5	30
5	125	356	246	650	6.8	58
6	152	394	263	*300	7.3	75
8	203	457	299	*400	8.1	115
10	254	533	343	*400	8.9	180
12	303	610	409	*600	9.8	205

Full Bore Class 300						
Size	d	L	H	W	t min	Weight
in	mm	mm	mm	mm	mm	Kg
1/2	13	140	85	160	3.5	2.5
3/4	19	152	93	160	4.0	3.5
1	25	165	112	180	4.4	5.5
1-1/2	38	190	132	240	5.3	9.0
2	51	216	138	400	6.2	13
2-1/2	62	241	155	400	6.5	21
3	76	283	175	450	7.0	27
4	102	305	200	500	8.0	40
5	125	381	246	550	8.7	65
6	152	403	263	*300	9.7	95
8	203	502	299	*400	11.3	150
10	254	568	501	*400	13.0	230

Rev.	0	Man.FIG.	FC Series
Date	2022-10-28	Type	2 Pcs Casting Body Body Floating Ball Valve
Customer	0		
Order No	0		