



345 Carlingview Drive
Toronto, Ontario M9W 6N9
Tel: 416 734 3300
Fax: 416 231 1626
Toll Free: 1.877.682.8772

www.tssa.org

July 05, 2017

SCOTT ISLIP
ROUND ENGINEERING INC
10 SEGWUN RD
WATERDOWN ON L8B 0K6
CA

Service Request Type: BPV-Fitting Registration

Service Request No.: 2106880

Your Reference No.: R-0690

Registered to: COLTON INDUSTRIES INC

Dear SCOTT ISLIP,

Technical Standards and Safety Authority (TSSA) is pleased to inform you that your submission has been reviewed and registered as follows:

CRN No.: 0H19492.5

Main Design No.: Dwg. No. R-0690A, R-0690B, R-0690C All Rev. 0, 10"DIA/6"DIA/8"DIA 150 lb Separator/Flanged Flash Vessels

Expiry Date: 05-Jul-2027

Please be advised that a valid quality control system must be maintained for the fitting registration to remain valid until the expiry date.

The stamped copy of the approved registration and the invoice are mailed separately. Should you have any questions or require further assistance, please contact a Customer Service Advisor at 1.877.682.TSSA (8772) or e-mail customerservices@tssa.org. We will be happy to assist you. When contacting TSSA regarding this file, please refer to the Service Request number provided above.

Yours truly,



Mark Valcic P. Eng.
Engineer Specialist BPV
Tel.: 416-734-3494
Fax: 416-231-1626
Email: mvalcic@tssa.org

COLTON INDUSTRIES
 40 CORSTATE AVENUE
 VAUGHAN, ONTARIO
 L4K 4X2, CANADA

26-Jun-17

SCOPE OF CRN REGISTRATION

Product Description	Colton Drawing No.	Part Number	Material Spec. (Note 3)	Design Code	Size	End Connection	MAWP at Temp. (Note 2)	MDMT
Separator	R-0690A	MSF-150S	Carbon Steel, SA105, SA53-E/B, SA234-WPB, SA36	ASME Section VIII Division 1	NPS 3" In/Out x 10.75" OD Shell	150 Lb. RF Flanged (Note 1)	285 psig at 100F, 260 psig at 200F, 230 psig at 300F, 200 psig at 400F, 170 psig at 500F	- 20F
Flash Vessel	R-0690B	FT6-150	Carbon Steel, SA105, SA53-E/B, SA234-WPB, SA36	ASME Section VIII Division 1	NPS 2-1/2" In/Out x 6.63" OD Shell	150 Lb. RF Flanged (Note 1)	285 psig at 100F, 260 psig at 200F, 230 psig at 300F, 200 psig at 400F, 170 psig at 500F	- 20F
Flash Vessel	R-0690C	FT8-150	Carbon Steel, SA105, SA53-E/B, SA234-WPB, SA36	ASME Section VIII Division 1	NPS 4" In/Out x 8.63" OD Shell	150 Lb. RF Flanged (Note 1)	285 psig at 100F, 260 psig at 200F, 230 psig at 300F, 200 psig at 400F, 170 psig at 500F	- 20F

Note 1: Flanges with a pressure class greater than class 150 Lb. may be used but in all cases the pressure-temperature ratings are limited to the values stated in the "MAWP at Temp." column above.

Note 2: Per Section 2.1 of ASME B16.5 linear interpolation between values is permitted.

Note 3: SA106-B may substitute for SA53-E/B. SA516-70 may substitute for SA36.

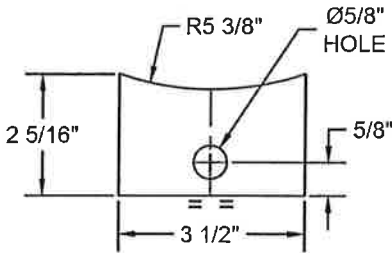
THIS IS PART OF
CRN 01199925
 Technical Standards & Safety Authority
 Boilers & Pressure Vessels
 Safety Program
Julie July 5/17



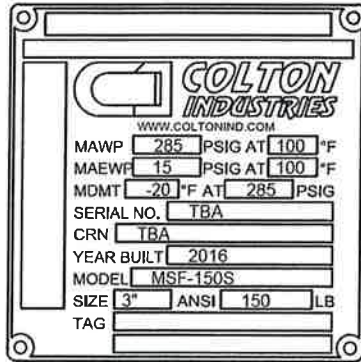
Bill of Materials			
Item	Description	Material	Qty
1	SHELL	10" SCH. 40 WELDED SA53-E/B C.STEEL PIPE X 15.25" LG.	1
2	HEADS	10" SCH. 40 SA234-WPB C.STEEL WELD CAP	2
3	N1, N2 FLANGE	3" 150 LB. RFSO SA105 C.STEEL	2
4	N1, N2 PIPE	3" SCH. 40 SA53-E/B C.STEEL PIPE X 10.38" LG	2
5	N3, N4 CPLG	2" 3000 LB. SA105 C.STEEL HALF CPLG.	2
6	INTERNAL BAFFLE	CARBON STEEL - SEE SHEET 2	1
7	SUPPORT PLATE	1/4" THK. SA36 C.STEEL - SEE DETAIL	2
8	GUSSET PLATE	1/4" THK. SA36 C.STEEL - SEE DETAIL	4
9	NAMEPLATE	1/8" SA36 C.STEEL BRACKET C/W NAMEPLATE IN ACCORDANCE WITH UG-116	1

N2

Id baffle to shell pipe, front and back, at both top and bottom, are attaching heads.



ITEM 7 DETAIL



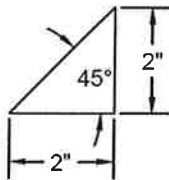
ITEM 9 DETAIL

MAWP stamped on nameplate shall be limited by 150 lb. ANSI flange, SA105 pressure rating and temperature in accordance with table II-2-1.1 of ASME B16.5.

Pressure	Temperature
285 psig	100 °F
260 psig	200 °F
230 psig	300 °F
200 psig	400 °F
170 psig	500 °F

Chart Notes:

- Per section 2.1 of ASME B16.5 linear interpolation between values is permitted.
- If not specified by customer MAWP on nameplate stamped 285 psig at 100 F.



ITEM 8 DETAIL

Notes:

- All dimensions are in inches. SI units if provided are in brackets.
- All nozzle bolt holes straddle the major centerlines unless specifically noted.
- All nozzle gasket surfaces require a serrated finish per ASME B16.5.
- All piping/nipples shall be per ASME B36.10 (latest), all fittings shall be per ASME B16.9 (latest), all flanges shall be per ASME B16.5 (2013), B16.47 (2011) and all couplings shall be per ASME B16.11 (latest).
- All welds to be neat in appearance, free of slag and other debris.
- Item to be cleaned of scale, oil, weld splatter and all foreign matter prior to hydrostatic test.
- Inside nozzle corners to have a minimum 1/8" radius.
- Impact test exempt per UCS-66.
- Fabricator to be certified to CSA-B51. Fabricator shall be authorized for shop fabrication of pressure vessels per ASME Section VIII, Div.1.
- Design Pressure: 285/FV psig at 500F.

MAWP: See Chart (Limited by ASME B16.5 150 Lb. Flange Rating)

MAP: 285 psig at 100F (Limited by ASME B16.5 150 Lb. Flange Rating)

THIS IS PART OF
CRN 0409992.5
Technical Standards & Safety Authority
Boilers & Pressure Vessels
Safety Program

Lukey Jey SA

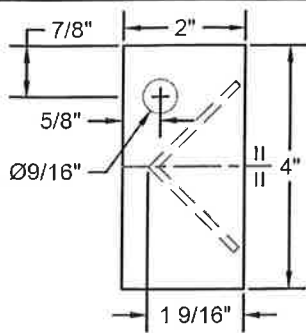
SECTION DATA	
V1)	3" ANSI 150 LB. RF
V2)	3" ANSI 150 LB. RF
V3)	2" FNPT
V4)	2" FNPT
V5)	N/A
V6)	N/A
V7)	N/A

UNLESS OTHERWISE NOTED
 1. DIMENSIONS ARE IN INCHES. IF USED SI UNITS ARE IN () BRACKETS.
 2. TOLERANCES
 FRACTIONAL: +/- 1/8"
 DECIMALS: XX +/- .02
 XXX +/- .005

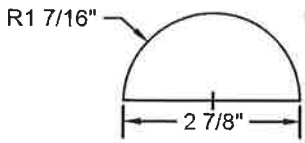
THE INFORMATION CONTAINED IN THE DRAWING IS THE SOLE PROPERTY OF COLTON INDUSTRIES. ANY REPRODUCTION IN PART OR AS A WHOLE WITHOUT THE WRITTEN PERMISSION OF COLTON INDUSTRIES IS PROHIBITED.

REV.	DESCRIPTION	DATE	INITIALS
	TITLE 3" 150 LB. RF FLANGED SEPARATOR		
	MODEL MSF-150S		
	WORK ORDER TBA		
	DRAWN BY SI	DRAWING SIZE B	
	CHECKED BY KF	SCALE 1:7	
	DATE 23/09/2016	DRAWING NO. R-0690A	REV. 0
			SHEET 1 of 2

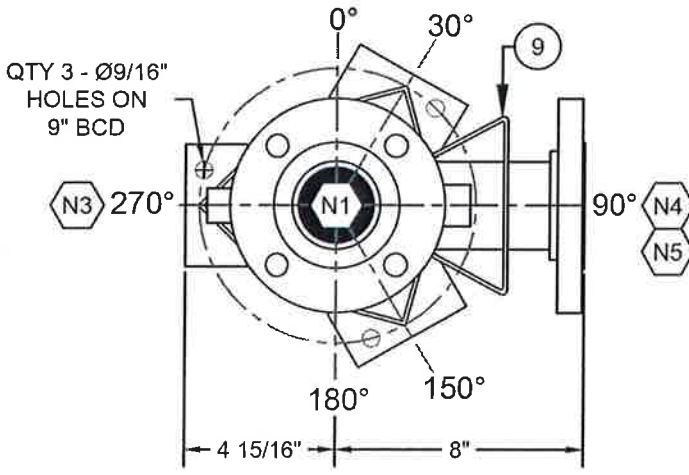




ITEM 8 DETAIL



ITEM 1 DETAIL

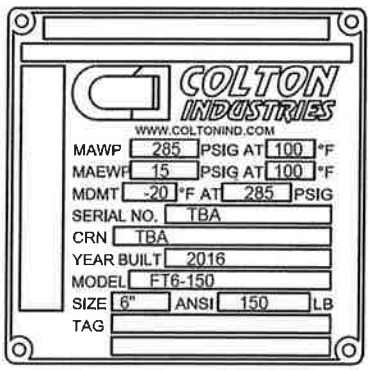


Bill of Materials			
Item	Description	Material	Qty
1	BAFFLE	1/4" THK. SA36 C.STEEL - DIM. AS SHOWN.	1
2	END CAPS	6" SCH. 40 SA234-WPB WELD CAP	2
3	N3	1/2" 3000 LB. SA105 NPT HALF CPLG	1
4	N4	3/4" 3000 LB. SA105 NPT HALF CPLG	1
5	N1, N5 FLANGE	2-1/2" 150 LB. RFSO SA105	2
6	N2	1-1/2" 3000 LB. SA105 NPT HALF CPLG	1
7	LEGS	2" X 2" X 1/8" THK. SA36 C.STEEL ANGLE X 16-1/4" LG.	3
8	BASEPLATES	4" X 2" X 1/4" THK. SA36 C.STEEL SEE DETAIL	3
9	NAMEPLATE	5-1/2" X 6" NAMEPLATE C/W 1/16" THK. SA36 C.STEEL NAMEPLATE BRACKET	2
10	SHELL	6" SCH. 40 SA53-E/B WELDED PIPE X 26-1/2" LG.	1
11	N1 PIPE	2-1/2" SCH. 40 SA53-E/B WELDED PIPE X 3-3/4" LG.	1
12	N5 PIPE	2-1/2" SCH. 40 SA53-E/B WELDED PIPE X 7-1/2" LG.	1

- Notes:
1. All dimensions are in inches. SI units if provided are in brackets.
 2. All nozzle bolt holes straddle the major centerlines unless specifically noted.
 3. All nozzle gasket surfaces require a serrated finish per ASME B16.5.
 4. All piping/nipples shall be per ASME B36.10 (latest), all fittings shall be per ASME B16.9 (latest), all flanges shall be per ASME B16.5 (2013), B16.47 (2011) and all couplings shall be per ASME B16.11 (latest).
 5. All welds to be neat in appearance, free of slag and other debris.
 6. Item to be cleaned of scale, oil, weld splatter and all foreign matter prior to hydrostatic test.
 7. Inside nozzle corners to have a minimum 1/8" radius.
 8. Impact test exempt per UCS-66.
 9. Fabricator to be certified to CSA-B51. Fabricator shall be authorized for shop fabrication of pressure vessels per ASME Section VIII, Div.1.
 10. Design Pressure: 285/FV psig at 500F.
MAWP: See Chart (Limited by ASME B16.5 150 Lb. Flange Rating)
MAP: 285 psig at 100F (Limited by ASME B16.5 150 Lb. Flange Rating)

MAWP stamped on nameplate shall be limited by 150 lb. ANSI flange, SA105 pressure rating and temperature in accordance with table II-2.1.1 of ASME B16.5.

Pressure	Temperature
285 psig	100 °F
260 psig	200 °F
230 psig	300 °F
200 psig	400 °F
170 psig	500 °F



ITEM 9 DETAIL

- Chart Notes:
1. Per section 2.1 of ASME B16.5 linear interpolation between values is permitted.
 2. If not specified by customer MAWP on nameplate stamped 285 psig at 100 F.

CONSTRUCTION DATA

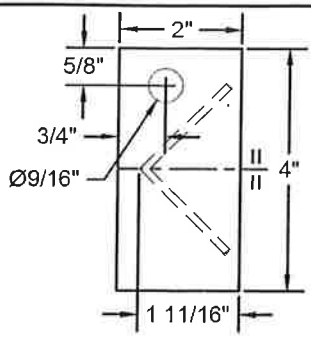
2-1/2" 150 Lb. RF
1-1/2" 3000 LB. NPT
1/2" 3000 LB. FNPT
3/4" 3000 LB. FNPT
2-1/2" 150 Lb. RF

THIS IS PART OF CRN 0419492.5
 Technical Standards & Safety Authority
 Boilers & Pressure Vessels
 Safety Program
Wae Jay 5/12

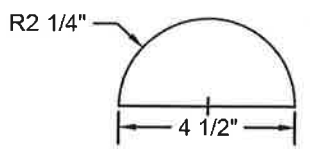
UNLESS OTHERWISE NOTED
 1. DIMENSIONS ARE IN INCHES. IF USED SI UNITS ARE IN () BRACKETS.
 2. TOLERANCES
 FRACTIONAL: +/- 1/8"
 DECIMALS: XX +/- .02
 .XXX +/- .005

THE INFORMATION CONTAINED IN THE DRAWING IS THE SOLE PROPERTY OF COLTON INDUSTRIES. ANY REPRODUCTION IN PART OR AS A WHOLE WITHOUT THE WRITTEN PERMISSION OF COLTON INDUSTRIES IS PROHIBITED.

REV.	DESCRIPTION	DATE	INITIALS
TITLE 6" DIA. 150 LB. RF FLANGED FLASH VESSEL MODEL FT6-150 WORK ORDER TBA DRAWN BY SI DRAWING SIZE B CHECKED BY KF SCALE 1:6 DATE 26/09/2016 DRAWING NO. R-0690B			
COLTON INDUSTRIES 40 CORSTATE AVE. VAUGHAN, ONTARIO CANADA L4K 4X2 PH: 1-888-300-9155 FAX: 1-888-300-9160 WWW.COLTONIND.COM		REV. 0 SHEET 1 of 1	



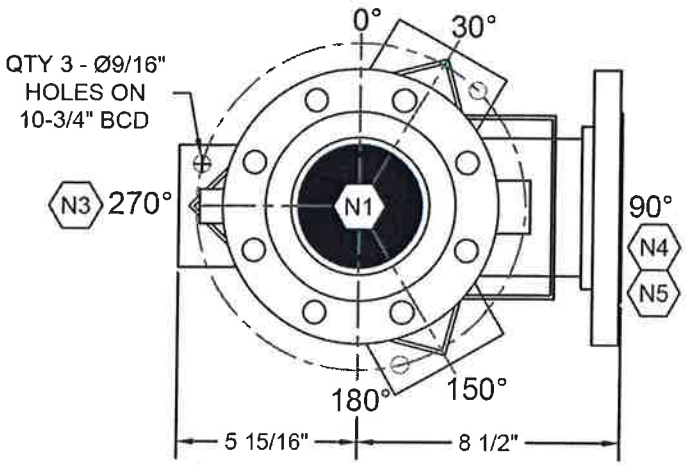
ITEM 8 DETAIL



ITEM 1 DETAIL

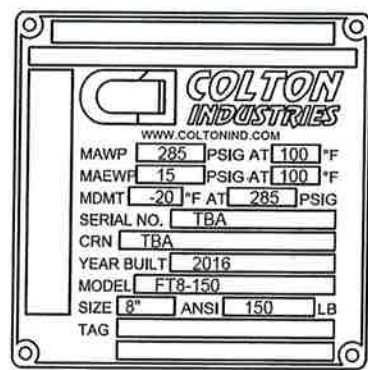
Bill of Materials			
Item	Description	Material	Qty
1	BAFFLE	3/8" THK. SA36 C.STEEL - DIM. AS SHOWN.	1
2	END CAPS	8" SCH. 40 SA234-WPB WELD CAP	2
3	N3	1/2" 3000 LB. SA105 NPT HALF CPLG	1
4	N4	1" 3000 LB. SA105 NPT HALF CPLG	1
5	N1, N5 FLANGE	4" 150 LB. RFSO SA105	2
6	N2	2" 3000 LB. SA105 NPT HALF CPLG	1
7	LEGS	2" X 2" X 1/8" THK. SA36 C.STEEL ANGLE X 17-1/2" LG.	3
8	BASEPLATES	4" X 2" X 1/4" THK. SA36 C.STEEL SEE DETAIL	3
9	NAMEPLATE	5-1/2" X 6" NAMEPLATE C/W 1/16" THK. SA36 C.STEEL NAMEPLATE BRACKET	2
10	SHELL	8" SCH. 40 SA53-E/B WELDED PIPE X 26-1/2" LG.	1
11	N1 PIPE	4" SCH. 40 SA53-E/B WELDED PIPE X 3-1/4" LG.	1
12	N5 PIPE	4" SCH. 40 SA53-E/B WELDED PIPE X 7-7/8" LG.	1

- Notes:
1. All dimensions are in inches. SI units if provided are in brackets.
 2. All nozzle bolt holes straddle the major centerlines unless specifically noted.
 3. All nozzle gasket surfaces require a serrated finish per ASME B16.5.
 4. All piping/ripples shall be per ASME B36.10 (latest), all fittings shall be per ASME B16.9 (latest), all flanges shall be per ASME B16.5 (2013), B16.47 (2011) and all couplings shall be per ASME B16.11 (latest).
 5. All welds to be neat in appearance, free of slag and other debris.
 6. Item to be cleaned of scale, oil, weld splatter and all foreign matter prior to hydrostatic test.
 7. Inside nozzle corners to have a minimum 1/8" radius.
 8. Impact test exempt per UCS-66.
 9. Fabricator to be certified to CSA-B51. Fabricator shall be authorized for shop fabrication of pressure vessels per ASME Section VIII, Div.1.
 10. Design Pressure: 285/FV psig at 500F.
MAWP: See Chart (Limited by ASME B16.5 150 Lb. Flange Rating)
MAP: 285 psig at 100F (Limited by ASME B16.5 150 Lb. Flange Rating)



MAWP stamped on nameplate shall be limited by 150 lb. ANSI flange, SA105 pressure rating and temperature in accordance with table II-2-1.1 of ASME B16.5.

Pressure	Temperature
285 psig	100 °F
260 psig	200 °F
230 psig	300 °F
200 psig	400 °F
170 psig	500 °F



ITEM 9 DETAIL

- Chart Notes:
1. Per section 2.1 of ASME B16.5 linear interpolation between values is permitted.
 2. If not specified by customer MAWP on nameplate stamped 285 psig at 100 F.

CONSTRUCTION DATA
4" 150 Lb. RF
2" 3000 LB. NPT
1/2" 3000 LB. FNPT
1" 3000 LB. FNPT
4" 150 Lb. RF

THIS IS PART OF
CRN 04194925
 Technical Standards & Safety Authority
 Boilers & Pressure Vessels
 Safety Program

Lucy
2015/17

UNLESS OTHERWISE NOTED DIMENSIONS ARE IN INCHES. IF USED SI UNITS ARE IN () BRACKETS.
 2. TOLERANCES FRACTIONAL: +/- 1/8" DECIMALS: .XX +/- .02 .XXX +/- .005

THE INFORMATION CONTAINED IN THE DRAWING IS THE SOLE PROPERTY OF COLTON INDUSTRIES. ANY REPRODUCTION IN PART OR AS A WHOLE WITHOUT THE WRITTEN PERMISSION OF COLTON INDUSTRIES IS PROHIBITED.

REV.	DESCRIPTION	DATE	INITIALS
	TITLE 8" DIA. 150 LB. RF FLANGED FLASH VESSEL		
	MODEL FT8-150		
	WORK ORDER TBA		
	DRAWN BY SI	DRAWING SIZE B	
	CHECKED BY KF	SCALE 1:6	
	DATE 26/09/2016	DRAWING NO R-0690C	
	REV. 0	SHEET 1 of 1	

