

ACI Central Inc.

20 McAulay Court, Charlottetown, PE C1A 9M7
 P.O. Box 53, Charlottetown, PE C1A 7K1. Phone: 902-566-1975, Fax: 902-566-3133

Recommendation to Register – Pressure Vessel Design

To: Muhammad Wani

Date: 08/26/2020

From: ACI Central Inc.

Manufacturer: Leslie Controls Inc
 12501 Telecom Dr
 Tampa, FL 33637
 USA

Manufacturer #: PV-9791

Subject: ACI Central Design Review

The product described on this form has satisfied the requirements for review of pressure vessel designs established by the Directors of ACI Central at their September 1994 meeting in Moncton, New Brunswick. We recommend this design be registered in your Jurisdiction under;

CRN: R6273.5

Unit Description	Drawing Number	Service	Design Code
Heat Exchanger Housing	A7821A81 rA & A7824A81 rA	Non Lethal	ASME Sect VIII Div. 1

Shell Side		Tube Side	
MAWP @ TEMP	MDMT @ MAWP	MAWP @ TEMP	MDMT @ MAWP
75 PSI @ 320 F	- 20 F @ 75 PSI		

Test Pressure: Hydro: 150 PSI Pneu:	Test Pressure: Hydro: Pneu:
--	--

Part	Material	Des. t"	Act. t"	CA"	% EF	RT	PWHT	Dimensions	Notes
Base Plate	SA 395 60-40-18	0.750	0.750	-	80			OD":	Design Report #
Casing	SA 395 60-40-18	0.531	0.531	-	80			OAL": 17.875"	R-0905 E600 DI
								W": 15.5"	
								H": 10.625"	
								HS FT":	Proof Tested


Notes:

- 1- The return of this form, bearing the signature and stamp of the Jurisdiction will legally establish the CRN shown on this form.
- 2- A copy of the Design bearing the CRN will be sent to the Manufacturer.
- 3- Details including service conditions will be posted on the 'Silent Inspector' Bulletin Board.
- 4- Copies of the Design and Specifications are available to ACIC Members on demand.
- 5- The form will be a permanent ACIC record.
- 6- To reduce turnaround times to a minimum fax your response to 902-566-3133.

ACIC Log#: 30231

Description: Heat Exchanger Housing, E600
 ASME Stamp, National Board Registered

This space is for Jurisdictional stamp and signature

	<p>NUNAVUT</p> <p>Boilers and Pressure Vessels Act</p>
<p>REGISTERED</p>	
<p>CRN <u>R6273.5N</u></p>	
<p>Date <u>AUG 28 2020</u></p>	
<p>Signed <u>[Signature]</u> Chief Inspector</p>	
<p>Territorial Registration Fee</p>	

ACI Central Inc.

20 McAulay Court, Charlottetown, PE C1A 9M7
 P.O. Box 53, Charlottetown, PE C1A 7K1. Phone: 902-566-1975, Fax: 902-566-3133

Recommendation to Register – Pressure Vessel Design

To: Steve Townsend

Date: 08/26/2020

From: ACI Central Inc.

Manufacturer: Leslie Controls Inc
 12501 Telecom Dr
 Tampa, FL 33637
 USA

Manufacturer #: PV-9791

Subject: ACI Central Design Review

The product described on this form has satisfied the requirements for review of pressure vessel designs established by the Directors of ACI Central at their September 1994 meeting in Moncton, New Brunswick. We recommend this design be registered in your Jurisdiction under;

CRN: R6273.5

Unit Description	Drawing Number	Service	Design Code
Heat Exchanger Housing	A7821A81 rA & A7824A81 rA	Non Lethal	ASME Sect VIII Div. 1

Shell Side		Tube Side	
MAWP @ TEMP	MDMT @ MAWP	MAWP @ TEMP	MDMT @ MAWP
75 PSI @ 320 F	- 20 F @ 75 PSI		

Test Pressure: Hydro: 150 PSI Pneu:	Test Pressure: Hydro: Pneu:
--	--

Part	Material	Des. t"	Act. t"	CA"	% EF	RT	PWHT	Dimensions	Notes
Base Plate	SA 395 60-40-18	0.750	0.750	-	80			OD":	Design Report # R-0905 E600 DI Proof Tested
Casing	SA 395 60-40-18	0.531	0.531	-	80			OAL": 17.875"	
								W": 15.5"	
								H": 10.625"	
								HS FT²:	

Notes:

- 1- The return of this form, bearing the signature and stamp of the Jurisdiction will legally establish the CRN shown on this form.
- 2- A copy of the Design bearing the CRN will be sent to the Manufacturer.
- 3- Details including service conditions will be posted on the 'Silent Inspector' Bulletin Board.
- 4- Copies of the Design and Specifications are available to ACIC Members on demand.
- 5- The form will be a permanent ACIC record.
- 6- To reduce turnaround times to a minimum fax your response to 902-566-3133.

ACIC Log#: 30231

Description: Heat Exchanger Housing, E600
 ASME Stamp, National Board Registered

This space is for Jurisdictional stamp and signature

ACCEPTED
 PROVINCE OF PRINCE EDWARD ISLAND
 COMMUNITIES, LAND & ENVIRONMENT

C.R.N. R6273.59

DATE: Aug 27/20

[Signature]

**INSPECTION SERVICES SECTION
 BOILER/PRESSURE VESSEL BRANCH**

ACI Central Inc.

20 McAulay Court, Charlottetown, PE C1A 9M7
 P.O. Box 53, Charlottetown, PE C1A 7K1. Phone: 902-566-1975, Fax: 902-566-3133

Recommendation to Register – Pressure Vessel Design

To: Donnie Ehler

Date: 08/26/2020

From: ACI Central Inc.

Manufacturer: Leslie Controls Inc
 12501 Telecom Dr
 Tampa, FL 33637
 USA

Manufacturer #: PV-9791

Subject: ACI Central Design Review

The product described on this form has satisfied the requirements for review of pressure vessel designs established by the Directors of ACI Central at their September 1994 meeting in Moncton, New Brunswick. We recommend this design be registered in your Jurisdiction under;

CRN: R6273.5

Unit Description	Drawing Number	Service	Design Code
Heat Exchanger Housing	A7821A81 rA & A7824A81 rA	Non Lethal	ASME Sect VIII Div. 1

Shell Side		Tube Side	
MAWP @ TEMP	MDMT @ MAWP	MAWP @ TEMP	MDMT @ MAWP
75 PSI @ 320 F	-20 F @ 75 PSI		

Test Pressure: Hydro: 150 PSI Pneu:	Test Pressure: Hydro: Pneu:
--	--

Part	Material	Des. t"	Act. t"	CA"	% EF	RT	PWHT	Dimensions	Notes
Base Plate	SA 395 60-40-18	0.750	0.750	-	80			OD":	Design Report # R-0905 E600 DI Proof Tested
Casing	SA 395 60-40-18	0.531	0.531	-	80			OAL": 17.875"	
								W": 15.5"	
								H": 10.625"	
								HS FT":	

Notes:

- 1- The return of this form, bearing the signature and stamp of the Jurisdiction will legally establish the CRN shown on this form.
- 2- A copy of the Design bearing the CRN will be sent to the Manufacturer.
- 3- Details including service conditions will be posted on the 'Silent Inspector' Bulletin Board.
- 4- Copies of the Design and Specifications are available to ACIC Members on demand.
- 5- The form will be a permanent ACIC record.
- 6- To reduce turnaround times to a minimum fax your response to 902-566-3133.

ACIC Log#: 30231

Description: Heat Exchanger Housing, E600
 ASME Stamp, National Board Registered

This space is for Jurisdictional stamp and signature



ACI Central Inc.

20 McAulay Court, Charlottetown, PE C1A 9M7
 P.O. Box 53, Charlottetown, PE C1A 7K1. Phone: 902-566-1975, Fax: 902-566-3133

Recommendation to Register – Pressure Vessel Design

To: Eben Creaser

Date: 08/26/2020

From: ACI Central Inc.

Manufacturer: Leslie Controls Inc
 12501 Telecom Dr
 Tampa, FL 33637
 USA

Manufacturer #: PV-9791

Subject: ACI Central Design Review

The product described on this form has satisfied the requirements for review of pressure vessel designs established by the Directors of ACI Central at their September 1994 meeting in Moncton, New Brunswick. We recommend this design be registered in your Jurisdiction under;

CRN: R6273.5

Unit Description	Drawing Number	Service	Design Code
Heat Exchanger Housing	A7821A81 rA & A7824A81 rA	Non Lethal	ASME Sect VIII Div. 1

Shell Side

Tube Side

MAWP @ TEMP	MDMT @ MAWP	MAWP @ TEMP	MDMT @ MAWP
75 PSI @ 320 F	- 20 F @ 75 PSI		

Test Pressure: Hydro: 150 PSI	Pneu:	Test Pressure: Hydro:	Pneu:
-------------------------------	-------	-----------------------	-------

Part	Material	Des. t"	Act. t"	CA"	% EF	RT	PWHT	Dimensions	Notes
Base Plate	SA 395 60-40-18	0.750	0.750	-	80			OD":	Design Report #
Casing	SA 395 60-40-18	0.531	0.531	-	80			OAL": 17.875"	R-0905 E600 DI
								W": 15.5"	
								H": 10.625"	
								HS FT":	Proof Tested

Notes:

- 1- The return of this form, bearing the signature and stamp of the Jurisdiction will legally establish the CRN shown on this form.
- 2- A copy of the Design bearing the CRN will be sent to the Manufacturer.
- 3- Details including service conditions will be posted on the 'Silent Inspector' Bulletin Board.
- 4- Copies of the Design and Specifications are available to ACIC Members on demand.
- 5- The form will be a permanent ACIC record.
- 6- To reduce turnaround times to a minimum fax your response to 902-566-3133.

ACIC Log#: 30231

Description: Heat Exchanger Housing, E600
 ASME Stamp, National Board Registered

This space is for Jurisdictional stamp and signature

New Brunswick
 Nouveau Brunswick

DEPT OF JUSTICE PUBLIC SAFETY
 BOILER & PRESSURE VESSEL ACT

REGISTRATION ONLY

CRN R6273.57

Eben Creaser
 CHIEF BOILER INSPECTOR

DATE 8/28/20

BLRs PVs

FITTINGS NUCLEAR COMPONENTS Rev. 1 06/2003

ACI Central Inc.

20 McAulay Court, Charlottetown, PE C1A 9M7
 P.O. Box 53, Charlottetown, PE C1A 7K1. Phone: 902-566-1975, Fax: 902-566-3133

Recommendation to Register – Pressure Vessel Design

To: Stephen Higdon

Date: 08/26/2020

From: ACI Central Inc.

Manufacturer: Leslie Controls Inc
 12501 Telecom Dr
 Tampa, FL 33637
 USA

Manufacturer #: PV-9791

Subject: ACI Central Design Review

The product described on this form has satisfied the requirements for review of pressure vessel designs established by the Directors of ACI Central at their September 1994 meeting in Moncton, New Brunswick. We recommend this design be registered in your Jurisdiction under;

CRN: R6273.5

Unit Description	Drawing Number	Service	Design Code
Heat Exchanger Housing	A7821A81 rA & A7824A81 rA	Non Lethal	ASME Sect VIII Div. 1

Shell Side		Tube Side	
MAWP @ TEMP	MDMT @ MAWP	MAWP @ TEMP	MDMT @ MAWP
75 PSI @ 320 F	- 20 F @ 75 PSI		

Test Pressure: Hydro: 150 PSI Pneu:	Test Pressure: Hydro: Pneu:
--	--

Part	Material	Des. t"	Act. t"	CA"	% EF	RT	PWHT	Dimensions	Notes
Base Plate	SA 395 60-40-18	0.750	0.750	-	80			OD":	Design Report # R-0905 E600 DI Proof Tested
Casing	SA 395 60-40-18	0.531	0.531	-	80			OAL": 17.875"	
								W": 15.5"	
								H": 10.625"	
								HS FT":	

Notes:

- 1- The return of this form, bearing the signature and stamp of the Jurisdiction will legally establish the CRN shown on this form.
- 2- A copy of the Design bearing the CRN will be sent to the Manufacturer.
- 3- Details including service conditions will be posted on the 'Silent Inspector' Bulletin Board.
- 4- Copies of the Design and Specifications are available to ACIC Members on demand.
- 5- The form will be a permanent ACIC record.
- 6- To reduce turnaround times to a minimum fax your response to 902-566-3133.

ACIC Log#: 30231

Description: Heat Exchanger Housing, E600
 ASME Stamp, National Board Registered

This space is for Jurisdictional stamp and signature

Newfoundland
 Labrador

Service NL

Registered R6273.50

Date 02 SEP 2020

Engineering and Inspection Services

Registered by SHigdon

UNDER THE AUTHORITY OF THE
 PUBLIC SAFETY ACT AND
 THE BOILER, PRESSURE VESSEL AND
 COMPRESSED GAS REGULATIONS

ACI Central Inc.

20 McAulay Court, Charlottetown, PE C1A 9M7
 P.O. Box 53, Charlottetown, PE C1A 7K1. Phone: 902-566-1975, Fax: 902-566-3133

Recommendation to Register – Pressure Vessel Design

To: Blair Rawlings

Date: 08/26/2020

From: ACI Central Inc.

Manufacturer: Leslie Controls Inc
 12501 Telecom Dr
 Tampa, FL 33637
 USA

Manufacturer #: PV-9791

Subject: ACI Central Design Review

The product described on this form has satisfied the requirements for review of pressure vessel designs established by the Directors of ACI Central at their September 1994 meeting in Moncton, New Brunswick. We recommend this design be registered in your Jurisdiction under;

CRN: R6273.5

Unit Description	Drawing Number	Service	Design Code
Heat Exchanger Housing	A7821A81 rA & A7824A81 rA	Non Lethal	ASME Sect VIII Div. 1

Shell Side

Tube Side

MAWP @ TEMP	MDMT @ MAWP	MAWP @ TEMP	MDMT @ MAWP
75 PSI @ 320 F	- 20 F @ 75 PSI		

Test Pressure: Hydro: 150 PSI Pneu:	Test Pressure: Hydro: Pneu:
--	--

Part	Material	Des. t"	Act. t"	CA"	% EF	RT	PWHT	Dimensions	Notes
Base Plate	SA 395 60-40-18	0.750	0.750	-	80			OD":	Design Report # R-0905 E600 DI Proof Tested
Casing	SA 395 60-40-18	0.531	0.531	-	80			OAL": 17.875"	
								W": 15.5"	
								H": 10.625"	
								HS FT²:	

Notes:

- 1- The return of this form, bearing the signature and stamp of the Jurisdiction will legally establish the CRN shown on this form.
- 2- A copy of the Design bearing the CRN will be sent to the Manufacturer.
- 3- Details including service conditions will be posted on the 'Silent Inspector' Bulletin Board.
- 4- Copies of the Design and Specifications are available to ACIC Members on demand.
- 5- The form will be a permanent ACIC record.
- 6- To reduce turnaround times to a minimum fax your response to 902-566-3133.

ACIC Log#: 30231

Description: Heat Exchanger Housing, E600
 ASME Stamp, National Board Registered

This space is for Jurisdictional stamp and signature



ACI Central Inc.

20 McAulay Court, Charlottetown, PE C1A 9M7
 P.O. Box 53, Charlottetown, PE C1A 7K1. Phone: 902-566-1975, Fax: 902-566-3133

Recommendation to Register – Pressure Vessel Design

To: Matthias Mallman

Date: 08/26/2020

From: ACI Central Inc.

Manufacturer: Leslie Controls Inc
 12501 Telecom Dr
 Tampa, FL 33637
 USA

Manufacturer #: PV-9791

Subject: ACI Central Design Review

The product described on this form has satisfied the requirements for review of pressure vessel designs established by the Directors of ACI Central at their September 1994 meeting in Moncton, New Brunswick. We recommend this design be registered in your Jurisdiction under;

CRN: R6273.5

Unit Description	Drawing Number	Service	Design Code
Heat Exchanger Housing	A7821A81 rA & A7824A81 rA	Non Lethal	ASME Sect VIII Div. 1

Shell Side

Tube Side

MAWP @ TEMP	MDMT @ MAWP	MAWP @ TEMP	MDMT @ MAWP
75 PSI @ 320 F	- 20 F @ 75 PSI		

Test Pressure: Hydro: 150 PSI Pneu:	Test Pressure: Hydro: Pneu:
--	--

Part	Material	Des. t"	Act. t"	CA*	% EF	RT	PWHT	Dimensions	Notes
Base Plate	SA 395 60-40-18	0.750	0.750	-	80			OD*:	Design Report # R-0905 E600 DI Proof Tested
Casing	SA 395 60-40-18	0.531	0.531	-	80			OAL*: 17.875'	
								W*: 15.5'	
								H*: 10.625'	
								HS FT*:	

Notes:

- 1- The return of this form, bearing the signature and stamp of the Jurisdiction will legally establish the CRN shown on this form.
- 2- A copy of the Design bearing the CRN will be sent to the Manufacturer.
- 3- Details including service conditions will be posted on the 'Silent Inspector' Bulletin Board.
- 4- Copies of the Design and Specifications are available to ACIC Members on demand.
- 5- The form will be a permanent ACIC record.
- 6- To reduce turnaround times to a minimum fax your response to 902-566-3133.

ACIC Log#: 30231

Description: Heat Exchanger Housing, E600
 ASME Stamp, National Board Registered

This space is for Jurisdictional stamp and signature



ACIC DESIGN REVIEW

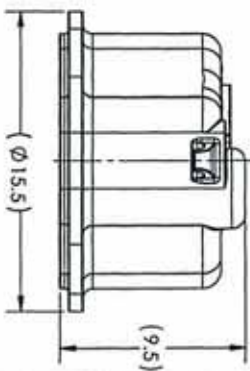
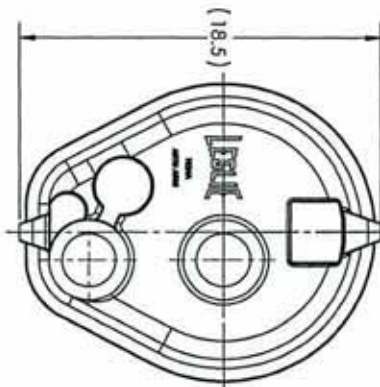
6 AUTHORIZED BY THE DIRECTORS OF AQ CENTRAL 4

CASING CASTING
 SIZE: E600
 CLASS: N/A
 PRODUCT: CONSTANTEMP HEATER
 MATERIAL: ASTM A536 60-40-18 (UNS F32800) DUCTILE IRON
 PATTERN NUMBER: 7824A

CRN: R6273.59870V770
 DATE: Sept 10, 2020
 FILE: PV-9791

REGISTRATION IS A LEGAL REQUIREMENT UNDER THE ACT.
 IT DOES NOT RELIEVE THE MANUFACTURER OF ANY
 RESPONSIBILITY FOR THE PRODUCT DETAILED HEREIN.

REV.	DESCRIPTION	DATE	APPROVED BY	APPROVED DATE
A	REWORK - WAS 28910PC (REVISION 11)	98870	JP	20160527



THIS DRAWING IS THE PROPERTY OF LESLIE CONTROLS, INC. AND IS LOANED TO YOU FOR YOUR INFORMATION ONLY. IT IS NOT TO BE REPRODUCED OR TRANSMITTED IN ANY FORM OR BY ANY MEANS, ELECTRONIC OR MECHANICAL, INCLUDING PHOTOCOPYING, RECORDING, OR BY ANY INFORMATION STORAGE AND RETRIEVAL SYSTEM. ANY UNAUTHORIZED REPRODUCTION OR TRANSMISSION OF THIS DRAWING IS STRICTLY PROHIBITED. THIS DRAWING MUST BE RETURNED TO LESLIE CONTROLS, INC. UPON COMPLETION OF THE DRAWING. LESLIE CONTROLS, INC. IS NOT RESPONSIBLE FOR ANY DAMAGE TO OR LOSS OF THE DRAWING OR ANY INFORMATION THEREON.

REV	SH	REV STATUS	REV SH	DATE	APPROVED BY	APPROVED DATE
A	1			20151130	JP	20160527
A	2					
A	3					

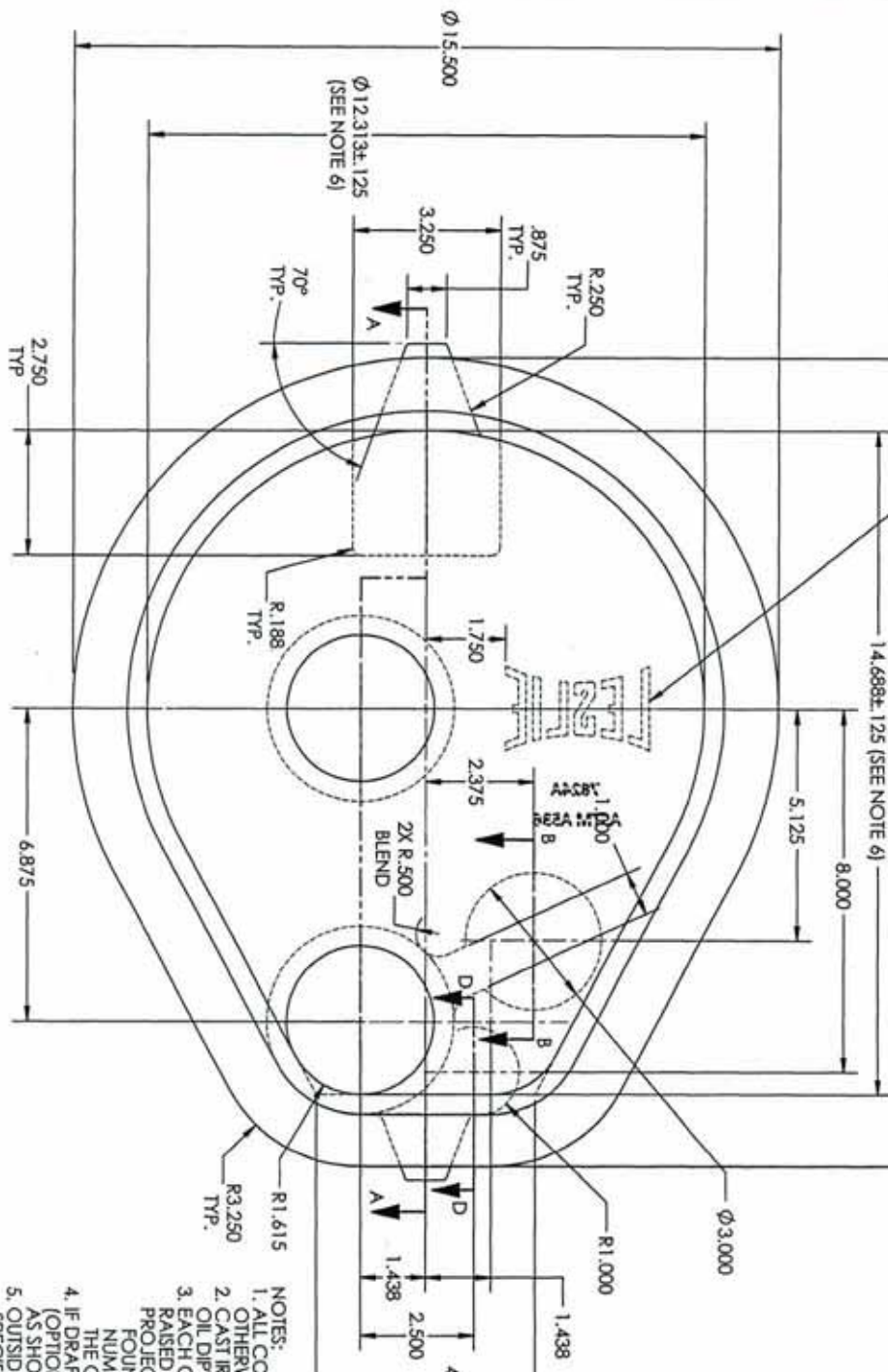
THIRD ANGLE PROJECTION

LESLE
 LESLIE CONTROLS, INC
 TAMPA, FLORIDA
 A SUBSIDIARY OF OCEAN INTERNATIONAL

TITLE: CASING CASTING
 E600

SCALE: 1:4 WEIGHT: 76.00 LB SHEET 1 OF 3

LOGO DETAILS PER
PATTERN NUMBER 6259
DRAWING NUMBER 7120DD



ZONE	REV.	DESCRIPTION	REVISION	E.C.N.	DRAWN BY	APPROVED BY	APPROVED DATE
		SEE SHEET 1 FOR REVISION HISTORY					

- NOTES:
1. ALL CORNER AND FILLET RADII TO BE .063 UNLESS OTHERWISE SPECIFIED.
 2. CAST IRON "PARKERIZE BEFORE MACHINING - NO OIL DIP".
 3. EACH CASTING TO HAVE THE FOLLOWING IN RAISED LETTERS: 250 CHARACTERS MIN .06 TO .08 PROJECTION ABOVE SURFACE.
FOUNDRY IDENTIFICATION, MATERIAL, HEAT, NUMBER, PATTERN NUMBER, "R" FOLLOWED BY THE CURRENT DRAWING REVISION (EXAMPLE: R00)
 4. IF DRAFT .50° IS ADDED TO INSIDE SURFACE (OPTIONAL) CASTING DIMENSIONS MUST BE HELD AS SHOWN BY CASTING TOLERANCES.
 5. OUTSIDE DRAFT MAY BE 2° PER SIDE IF NOT SPECIFIED, BUT WALL THICKNESS AND DIMENSIONAL LIMITS MUST BE HELD.
 6. DIMENSIONS LOCATED FROM BOTTOM OF CORE, SURFACE MARKED [A]
 7. CASTING TOLERANCE PER ISO 8062-3 CTG-B UNLESS OTHERWISE SPECIFIED.

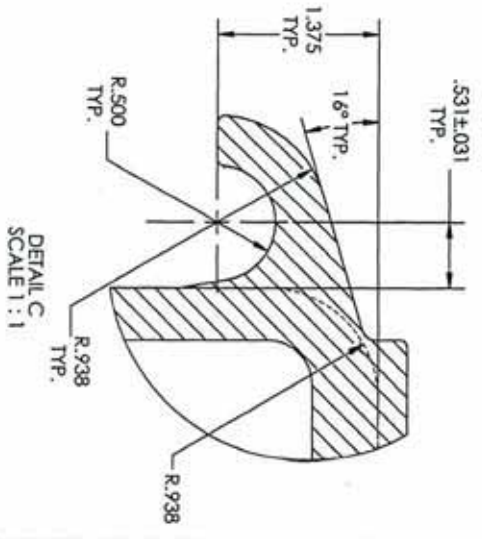
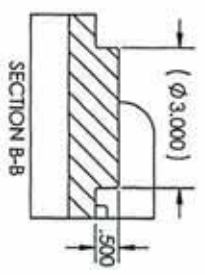
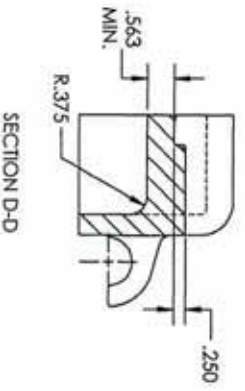
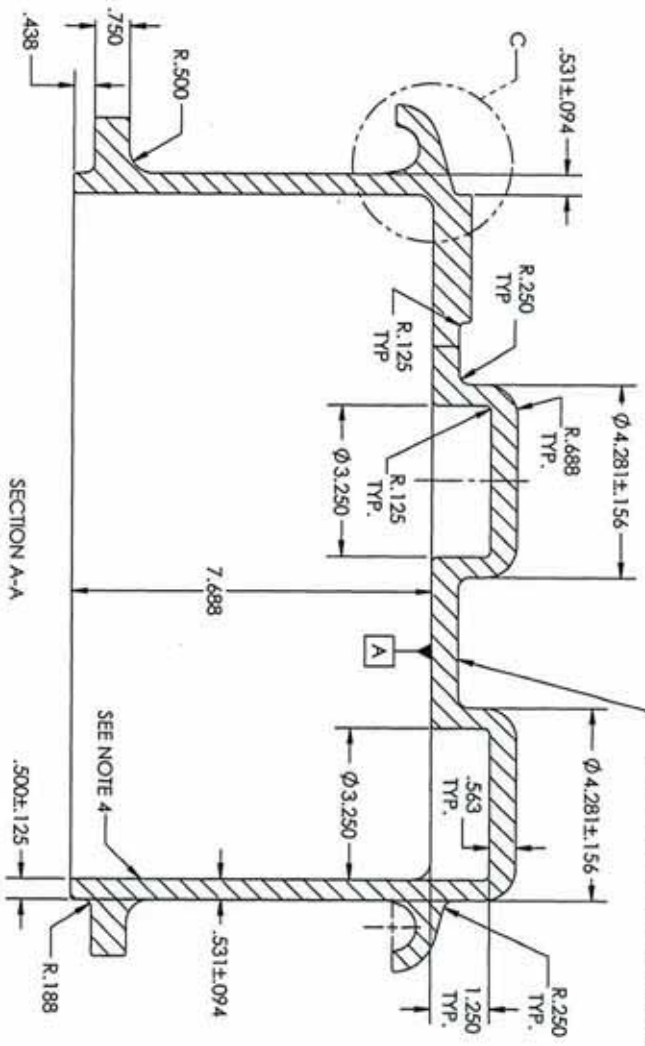
SCALE: 2.5 WEIGHT: 76.00 LB SHEET 2 OF 3

SIZE: **B** 35795
CAGE CODE: **A7824A**
REV: **81**
REV: **A**

ZONE	REV.	DESCRIPTION	REVISIONS	E.C.N.	DRAWN BY	APPROVED BY	APPROVED DATE

SEE SHEET 1 FOR REVISION HISTORY

ITEMS REFERENCED IN NOTE 3 TO BE LOCATED HERE (APPROX.)



SIZE	CAGE CODE	DWG. NO.	REV.
B	35795	A7824A	81
SCALE: 2:5		WEIGHT: 76.00 LB	SHEET 3 OF 3

REVISIONS		ZONE	REV.	DESCRIPTION	E.C.N.	DRAWN BY	APPROVED BY	APPROVED DATE
		A		REDAWN - FLANGE THICKNESSES DERIVED DWG # WAS 25149C	59073	DWC	BPS	20150728

ACIC DESIGN REVIEW

AUTHORISED BY THE DIRECTORS OF ACI CENTRAL

CRN: R6273.59870YTN

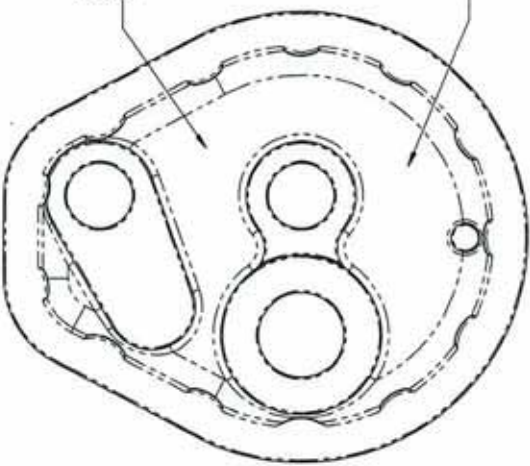
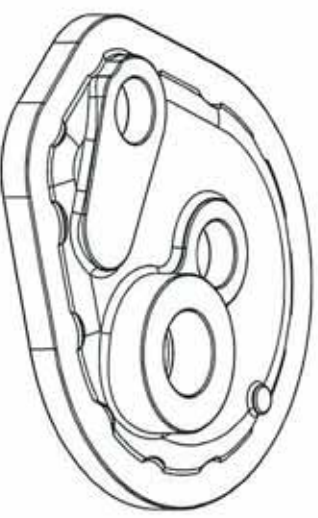
DATE: Sept 10, 2020

FILE: PV-9791

REGISTRATION IS A LEGAL REQUIREMENT UNDER THE ACT.
IT DOES NOT RELIEVE THE MANUFACTURER OF ANY
RESPONSIBILITY FOR THE PRODUCT DETAILED HEREIN.



1. INTERPRET THIS DRAWING PER ASME Y14.100.
2. MATERIAL: DUCTILE IRON, ASTM A536.
3. UNLESS OTHERWISE NOTED, CORNER AND FILLET RADIUS TO BE R.062
4. 2" DRAFT ALLOWED ON INSIDE AND OUTSIDE WALLS.
5. MARKINGS INDICATED TO BE IN .250 HIGH MINIMUM CHARACTERS, .07 ±.01 PROJECTION ABOVE SURFACE
6. UNLESS OTHERWISE NOTED, LINEAR TOLERANCES TO BE:
 - UP TO 4.000, ±.062
 - 4.001 TO 8.000, +.094
 - OVER 8.000, ±.125
 DIAMETRIC AND RADIAL TOLERANCES TO BE:
 - UP TO 8.000, ±.094
 - OVER 8.000, ±.125
 MISMATCH AND CORE SHIFT TO BE WITHIN:
 - UP TO 12.000, ±.031
 - OVER 12.000, ±.062
7. THIS DRAWING HAS BEEN REVIEWED FOR CRITICAL DIMENSIONS. ALL DIMENSIONS NOT COVERED BY THE TITLE BLOCK TOLERANCE BLOCK SHALL BE CONSIDERED CRITICAL TO FORM, FIT OR FUNCTION AND MUST BE INSPECTED UNLESS THE SPECIFIED TOLERANCES ARE MORE THAN THE TITLE BLOCK TOLERANCE. NO DEVIATION (CRITICAL OR NON-CRITICAL) IS ACCEPTABLE WITHOUT ENGINEERING APPROVAL.



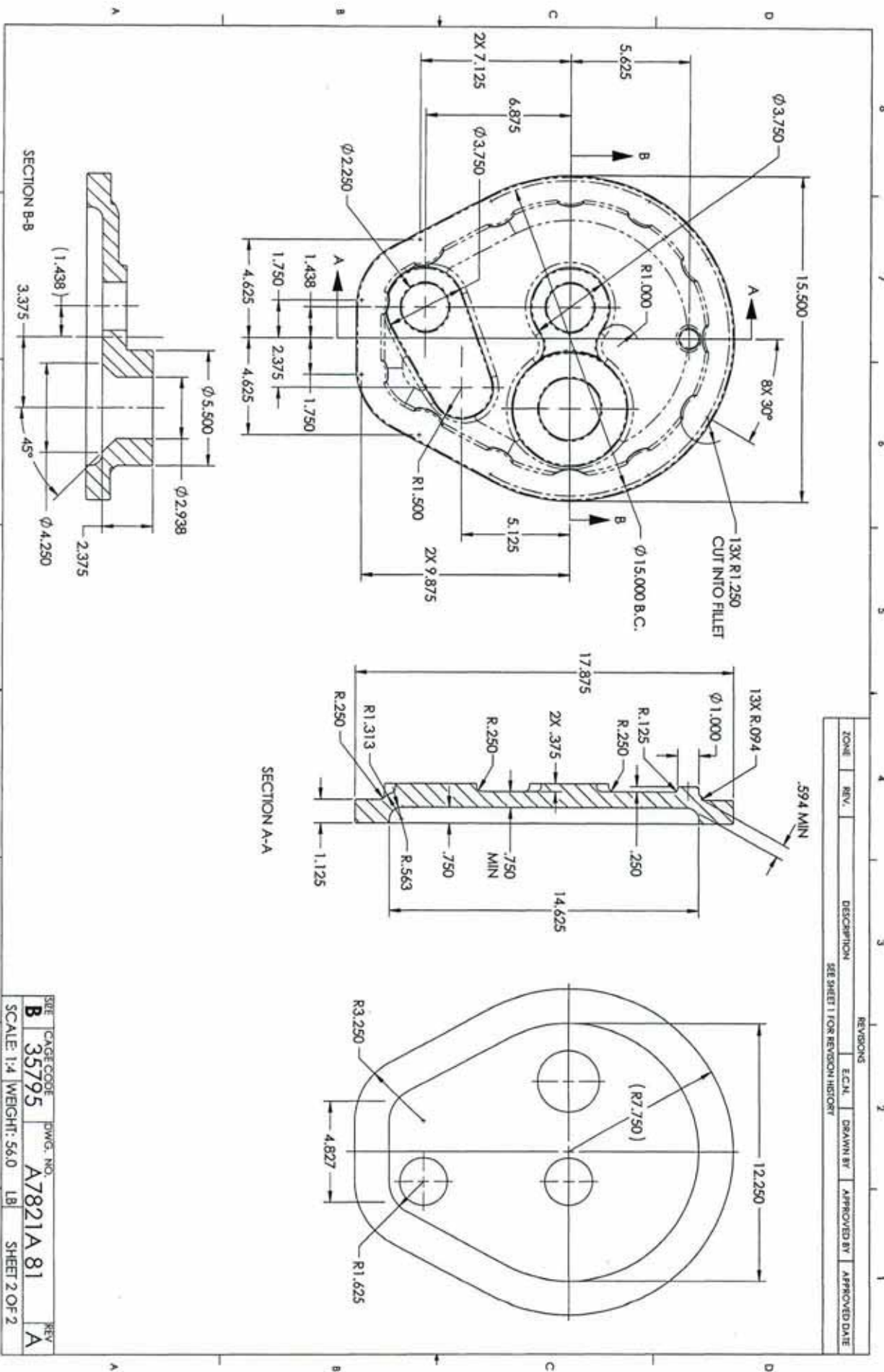
RAISED MARKINGS TO INCLUDE:
MATERIAL "A536"
HEAT No "XXXX"
PATTERN No "7821"
SEE NOTE 5

LESIE LOGO
PER PATTERN No 6259
DRAWING No 7120 DD

PRESSURE CONTAINING PART

PART REFERENCE NO.	DATE MATERIAL REF NO.	CASTING NO.	UNIT QTY	REV	SH	REV STATUS	REV SH	THIRD ANGLE PROJECTION	DATE	SCALE	WEIGHT	SHEET
			A68544			A 1	A 2		19850227	1:4	56.0 LB	1 OF 2
<p>LESIE LESLIE CONTROLS, INC TAMPA, FLORIDA A DIVISION OF LESLIE INTERNATIONAL</p> <p>CASTING BASE PLATE E600 & E920 HEATERS</p> <p>APPROVED BY: <u>BPS</u> DATE: <u>20150728</u> EXPORT LICENSE: <u>EA899</u></p> <p>SIZE: <u>B</u> DWG. NO.: <u>A7821A.81</u> REV: <u>A</u> SCALE: <u>1:4</u> WEIGHT: <u>56.0 LB</u> SHEET <u>1</u> OF <u>2</u></p>												

THIS DRAWING IS THE PROPERTY OF LESLIE CONTROLS, INC. CONTAINING INFORMATION IS CONFIDENTIAL TO LESLIE CONTROLS, INC. AND IS NOT TO BE REPRODUCED OR TRANSMITTED IN ANY FORM OR BY ANY MEANS, ELECTRONIC OR MECHANICAL, INCLUDING PHOTOCOPYING, RECORDING, OR BY ANY INFORMATION STORAGE AND RETRIEVAL SYSTEM. WITHOUT THE WRITTEN PERMISSION OF LESLIE CONTROLS, INC. THIS DRAWING MAY BE RETURNED ONLY WITH EXPRESS WRITTEN CONSENT. REPRODUCTION OF THIS DRAWING UNDER ANY CIRCUMSTANCES IS EXPRESSLY FORBIDDEN.



ZONE	REV.	DESCRIPTION	REVISIONS	E.C.N.	DRAWN BY	APPROVED BY	APPROVED DATE
		SEE SHEET 1 FOR REVISION HISTORY					

SIZE: **B**
 CAGE CODE: 35795
 SCALE: 1:4
 WEIGHT: 56.0 LB
 SHEET 2 OF 2

DWG. NO.: A7821A 81
 REV: A