

ACI Central Inc.

20 McAulay Court, Charlottetown, PE C1A 9M7
 P.O. Box 53, Charlottetown, PE C1A 7K1. Phone: 902-566-1975, Fax: 902-566-3133

Recommendation to Register – Pressure Vessel Design

To: Muhammad Wani

Date: 08/26/2020

From: ACI Central Inc.

Manufacturer: Leslie Controls Inc
 12501 Telecom Dr
 Tampa, FL 33637
 USA

Manufacturer #: PV-9791

Subject: ACI Central Design Review

The product described on this form has satisfied the requirements for review of pressure vessel designs established by the Directors of ACI Central at their September 1994 meeting in Moncton, New Brunswick. We recommend this design be registered in your Jurisdiction under:

CRN: R6272.5

Unit Description	Drawing Number	Service	Design Code
Heat Exchanger Housing	A68553REF & A68552REF rA	Non Lethal	ASME Sect VIII Div. 1

Shell Side

Tube Side

MAWP @ TEMP	MDMT @ MAWP	MAWP @ TEMP	MDMT @ MAWP
75 PSI @ 320 F	- 20 @ 70 PSI		

Test Pressure: Hydro: 150 PSI Pneu:	Test Pressure: Hydro: Pneu:
--	--

Part	Material	Des. t"	Act. t"	CA"	% EF	RT	PWHT	Dimensions	Notes
Base Plate	SA 395 60-40-18	0.75	0.75	-	80			OD":	Design Report # R-0905 E1200 DI Proof Tested
Casing	SA 395 60-40-18	0.63	0.63	-	80			OAL": 23.4"	
								W": 18.5"	
								H": 19.7"	
								HS FT":	

Notes:

- 1- The return of this form, bearing the signature and stamp of the Jurisdiction will legally establish the CRN shown on this form.
- 2- A copy of the Design bearing the CRN will be sent to the Manufacturer.
- 3- Details including service conditions will be posted on the 'Silent Inspector' Bulletin Board.
- 4- Copies of the Design and Specifications are available to ACIC Members on demand.
- 5- The form will be a permanent ACIC record.
- 6- To reduce turnaround times to a minimum fax your response to 902-566-3133.

ACIC Log#: 30233

Description: Heat Exchanger Housing, E1200
 ASME Stamp, National Board Registered

This space is for Jurisdictional stamp and signature

NUNAVUT
Boilers and
Pressure Vessels Act

REGISTERED

CRN R6272.5N

Date AUG 28 2020

Signed [Signature]
Chief Inspector

Territorial Registration Fee

ACI Central Inc.

20 McAulay Court, Charlottetown, PE C1A 9M7
 P.O. Box 53, Charlottetown, PE C1A 7K1. Phone: 902-566-1975, Fax: 902-566-3133

Recommendation to Register – Pressure Vessel Design

To: Steve Townsend

Date: 08/26/2020

From: ACI Central Inc.

Manufacturer: Leslie Controls Inc
 12501 Telecom Dr
 Tampa, FL 33637
 USA

Manufacturer #: PV-9791

Subject: ACI Central Design Review

The product described on this form has satisfied the requirements for review of pressure vessel designs established by the Directors of ACI Central at their September 1994 meeting in Moncton, New Brunswick. We recommend this design be registered in your Jurisdiction under;

CRN: R6272.5

Unit Description	Drawing Number	Service	Design Code
Heat Exchanger Housing	A68553REF & A68552REF rA	Non Lethal	ASME Sect VIII Div. 1

Shell Side		Tube Side	
MAWP @ TEMP	MDMT @ MAWP	MAWP @ TEMP	MDMT @ MAWP
75 PSI @ 320 F	- 20 @ 70 PSI		

Test Pressure: Hydro: 150 PSI Pneu:	Test Pressure: Hydro: Pneu:
--	--

Part	Material	Des. t"	Act. t"	CA"	% EF	RT	PWHT	Dimensions	Notes
Base Plate	SA 395 60-40-18	0.75	0.75	-	80			OD":	Design Report # R-0905 E1200 DI Proof Tested
Casing	SA 395 60-40-18	0.63	0.63	-	80			OAL": 23.4"	
								W": 18.5"	
								H": 19.7"	
								HS FT":	

Notes:

- 1- The return of this form, bearing the signature and stamp of the Jurisdiction will legally establish the CRN shown on this form.
- 2- A copy of the Design bearing the CRN will be sent to the Manufacturer.
- 3- Details including service conditions will be posted on the 'Silent Inspector' Bulletin Board.
- 4- Copies of the Design and Specifications are available to ACIC Members on demand.
- 5- The form will be a permanent ACIC record.
- 6- To reduce turnaround times to a minimum fax your response to 902-566-3133.

ACIC Log#: 30233

Description: Heat Exchanger Housing, E1200
 ASME Stamp, National Board Registered

This space is for Jurisdictional stamp and signature

ACCEPTED
PROVINCE OF PRINCE EDWARD ISLAND
COMMUNITIES, LAND & ENVIRONMENT

C.R.N. R6272.5a
 DATE: Aug 27/20

INSPECTION SERVICES SECTION
BOILER/PRESSURE VESSEL BRANCH

ACI Central Inc.

20 McAulay Court, Charlottetown, PE C1A 9M7
 P.O. Box 53, Charlottetown, PE C1A 7K1. Phone: 902-566-1975, Fax: 902-566-3133

Recommendation to Register – Pressure Vessel Design

To: Donnie Ehler

Date: 08/26/2020

From: ACI Central Inc.

Manufacturer: Leslie Controls Inc
 12501 Telecom Dr
 Tampa, FL 33637
 USA

Manufacturer #: PV-9791

Subject: ACI Central Design Review

The product described on this form has satisfied the requirements for review of pressure vessel designs established by the Directors of ACI Central at their September 1994 meeting in Moncton, New Brunswick. We recommend this design be registered in your Jurisdiction under;

CRN: R6272.5

Unit Description	Drawing Number	Service	Design Code
Heat Exchanger Housing	A68553REF & A68552REF rA	Non Lethal	ASME Sect VIII Div. 1

Shell Side		Tube Side	
MAWP @ TEMP	MDMT @ MAWP	MAWP @ TEMP	MDMT @ MAWP
75 PSI @ 320 F	- 20 @ 70 PSI		

Test Pressure: Hydro: 150 PSI Pneu:	Test Pressure: Hydro: Pneu:
--	--

Part	Material	Des. t"	Act. t"	CA"	% EF	RT	PWHT	Dimensions	Notes
Base Plate	SA 395 60-40-18	0.75	0.75	-	80			OD":	Design Report # R-0905 E1200 DI Proof Tested
Casing	SA 395 60-40-18	0.63	0.63	-	80			OAL": 23.4"	
								W": 18.5"	
								H": 19.7"	
								HS FT":	

Notes:

- 1- The return of this form, bearing the signature and stamp of the Jurisdiction will legally establish the CRN shown on this form.
- 2- A copy of the Design bearing the CRN will be sent to the Manufacturer.
- 3- Details including service conditions will be posted on the 'Silent Inspector' Bulletin Board.
- 4- Copies of the Design and Specifications are available to ACIC Members on demand.
- 5- The form will be a permanent ACIC record.
- 6- To reduce turnaround times to a minimum fax your response to 902-566-3133.

ACIC Log#: 30233

Description: Heat Exchanger Housing, E1200
 ASME Stamp, National Board Registered

This space is for Jurisdictional stamp and signature



Date Aug. 28/20

C.R.N. R6272.58

Dwg. A68553REF & A68552REF rA

Signed Yvonne Perry

1 of 1

Part



ACI Central Inc.

20 McAulay Court, Charlottetown, PE C1A 9M7
 P.O. Box 53, Charlottetown, PE C1A 7K1. Phone: 902-566-1975, Fax: 902-566-3133

Recommendation to Register – Pressure Vessel Design

To: Eben Creaser

Date: 08/26/2020

From: ACI Central Inc.

Manufacturer: Leslie Controls Inc
 12501 Telecom Dr
 Tampa, FL 33637
 USA

Manufacturer #: PV-9791

Subject: ACI Central Design Review

The product described on this form has satisfied the requirements for review of pressure vessel designs established by the Directors of ACI Central at their September 1994 meeting in Moncton, New Brunswick. We recommend this design be registered in your Jurisdiction under;

CRN: R6272.5

Unit Description	Drawing Number	Service	Design Code
Heat Exchanger Housing	A68553REF & A68552REF rA	Non Lethal	ASME Sect VIII Div. 1

Shell Side		Tube Side	
MAWP @ TEMP	MDMT @ MAWP	MAWP @ TEMP	MDMT @ MAWP
75 PSI @ 320 F	- 20 @ 70 PSI		

Test Pressure: Hydro: 150 PSI	Pneu:	Test Pressure: Hydro:	Pneu:
-------------------------------	-------	-----------------------	-------

Part	Material	Des. t"	Act. t"	CA"	% EF	RT	PWHT	Dimensions	Notes
Base Plate	SA 395 60-40-18	0.75	0.75	-	80			OD":	Design Report # R-0905 E1200 DI Proof Tested
Casing	SA 395 60-40-18	0.63	0.63	-	80			OAL": 23.4"	
								W": 18.5"	
								H": 19.7"	
								HS FT²:	

Notes:

- 1- The return of this form, bearing the signature and stamp of the Jurisdiction will legally establish the CRN shown on this form.
- 2- A copy of the Design bearing the CRN will be sent to the Manufacturer.
- 3- Details including service conditions will be posted on the 'Silent Inspector' Bulletin Board.
- 4- Copies of the Design and Specifications are available to ACIC Members on demand.
- 5- The form will be a permanent ACIC record.
- 6- To reduce turnaround times to a minimum fax your response to 902-566-3133.

ACIC Log#: 30233

Description: Heat Exchanger Housing, E1200
 ASME Stamp, National Board Registered

This space is for Jurisdictional stamp and signature

New Brunswick
 Nouveau Brunswick

DEPT OF JUSTICE PUBLIC SAFETY
 BOILER & PRESSURE VESSEL ACT

REGISTRATION ONLY

CRN R6272.57

Eben Creaser
 CHIEF BOILER INSPECTOR

DATE 8/28/20

BLRs

PVs

FITTINGS

NUCLEAR COMPONENTS

ACI Central Inc.

20 McAulay Court, Charlottetown, PE C1A 9M7
 P.O. Box 53, Charlottetown, PE C1A 7K1. Phone: 902-566-1975, Fax: 902-566-3133

Recommendation to Register – Pressure Vessel Design

To: Stephen Higdon

Date: 08/26/2020

From: ACI Central Inc.

Manufacturer: Leslie Controls Inc
 12501 Telecom Dr
 Tampa, FL 33637
 USA

Manufacturer #: PV-9791

Subject: ACI Central Design Review

The product described on this form has satisfied the requirements for review of pressure vessel designs established by the Directors of ACI Central at their September 1994 meeting in Moncton, New Brunswick. We recommend this design be registered in your Jurisdiction under;

CRN: R6272.5

Unit Description	Drawing Number	Service	Design Code
Heat Exchanger Housing	A68553REF & A68552REF rA	Non Lethal	ASME Sect VIII Div. 1

Shell Side		Tube Side	
MAWP @ TEMP	MDMT @ MAWP	MAWP @ TEMP	MDMT @ MAWP
75 PSI @ 320 F	- 20 @ 70 PSI		

Test Pressure: Hydro: 150 PSI Pneu:	Test Pressure: Hydro: Pneu:
--	--

Part	Material	Des. t"	Act. t"	CA"	% EF	RT	PWHT	Dimensions	Notes
Base Plate	SA 395 60-40-18	0.75	0.75	-	80			OD":	Design Report # R-0905 E1200 DI Proof Tested
Casing	SA 395 60-40-18	0.63	0.63	-	80			OAL": 23.4"	
								W": 18.5"	
								H": 19.7"	
								HS FT²:	

Notes:

- 1- The return of this form, bearing the signature and stamp of the Jurisdiction will legally establish the CRN shown on this form.
- 2- A copy of the Design bearing the CRN will be sent to the Manufacturer.
- 3- Details including service conditions will be posted on the 'Silent Inspector' Bulletin Board.
- 4- Copies of the Design and Specifications are available to ACIC Members on demand.
- 5- The form will be a permanent ACIC record.
- 6- To reduce turnaround times to a minimum fax your response to 902-566-3133.

ACIC Log#: 30233

Description: Heat Exchanger Housing, E1200
 ASME Stamp, National Board Registered

This space is for Jurisdictional stamp and signature

Newfoundland
 Labrador
 Service NL

Registered R6272.50
 Date 02 SEP 2020

Engineering and Inspection Services

Registered by [Signature]

UNDER THE AUTHORITY OF THE
 PUBLIC SAFETY ACT AND
 THE BOILER, PRESSURE VESSEL AND
 COMPRESSED GAS REGULATIONS

ACI Central Inc.

20 McAulay Court, Charlottetown, PE C1A 9M7
 P.O. Box 53, Charlottetown, PE C1A 7K1. Phone: 902-566-1975, Fax: 902-566-3133

Recommendation to Register – Pressure Vessel Design

To: Blair Rawlings

Date: 08/26/2020

From: ACI Central Inc.

Manufacturer: Leslie Controls Inc
 12501 Telecom Dr
 Tampa, FL 33637
 USA

Manufacturer #: PV-9791

Subject: ACI Central Design Review

The product described on this form has satisfied the requirements for review of pressure vessel designs established by the Directors of ACI Central at their September 1994 meeting in Moncton, New Brunswick. We recommend this design be registered in your Jurisdiction under;

CRN: R6272.5

Unit Description	Drawing Number	Service	Design Code
Heat Exchanger Housing	A68553REF & A68552REF rA	Non Lethal	ASME Sect VIII Div. 1

Shell Side

Tube Side

MAWP @ TEMP	MDMT @ MAWP	MAWP @ TEMP	MDMT @ MAWP
75 PSI @ 320 F	- 20 @ 70 PSI		

Test Pressure: Hydro: 150 PSI Pneu:	Test Pressure: Hydro: Pneu:
--	--

Part	Material	Des. t"	Act. t"	CA"	% EF	RT	PWHT	Dimensions	Notes
Base Plate	SA 395 60-40-18	0.75	0.75	-	80			OD":	Design Report # R-0905 E1200 DI Proof Tested
Casing	SA 395 60-40-18	0.63	0.63	-	80			OAL": 23.4"	
								W": 18.5"	
								H": 19.7"	
								HS FT²:	

Notes:

- 1- The return of this form, bearing the signature and stamp of the Jurisdiction will legally establish the CRN shown on this form.
- 2- A copy of the Design bearing the CRN will be sent to the Manufacturer.
- 3- Details including service conditions will be posted on the 'Silent Inspector' Bulletin Board.
- 4- Copies of the Design and Specifications are available to ACIC Members on demand.
- 5- The form will be a permanent ACIC record.
- 6- To reduce turnaround times to a minimum fax your response to 902-566-3133.

ACIC Log#: 30233

Description: Heat Exchanger Housing, E1200
 ASME Stamp, National Board Registered

This space is for Jurisdictional stamp and signature



ACI Central Inc.

20 McAulay Court, Charlottetown, PE C1A 9M7
 P.O. Box 53, Charlottetown, PE C1A 7K1. Phone: 902-566-1975, Fax: 902-566-3133

Recommendation to Register – Pressure Vessel Design

To: Matthias Mallman

Date: 08/26/2020

From: ACI Central Inc.

Manufacturer: Leslie Controls Inc
 12501 Telecom Dr
 Tampa, FL 33637
 USA

Manufacturer #: PV-9791

Subject: ACI Central Design Review

The product described on this form has satisfied the requirements for review of pressure vessel designs established by the Directors of ACI Central at their September 1994 meeting in Moncton, New Brunswick. We recommend this design be registered in your Jurisdiction under;

CRN: R6272.5

Unit Description	Drawing Number	Service	Design Code
Heat Exchanger Housing	A68553REF & A68552REF rA	Non Lethal	ASME Sect VIII Div. 1

Shell Side		Tube Side	
MAWP @ TEMP	MDMT @ MAWP	MAWP @ TEMP	MDMT @ MAWP
75 PSI @ 320 F	- 20 @ 70 PSI		

Test Pressure: Hydro: 150 PSI Pneu:	Test Pressure: Hydro: Pneu:
--	--

Part	Material	Des. t"	Act. t"	CA"	% EF	RT	PWHT	Dimensions	Notes
Base Plate	SA 395 60-40-18	0.75	0.75	-	80			OD":	Design Report # R-0905 E1200 DI Proof Tested
Casing	SA 395 60-40-18	0.63	0.63	-	80			OAL": 23.4"	
								W": 18.5"	
								H": 19.7"	
								HS FT²:	

Notes:

- 1- The return of this form, bearing the signature and stamp of the Jurisdiction will legally establish the CRN shown on this form.
- 2- A copy of the Design bearing the CRN will be sent to the Manufacturer.
- 3- Details including service conditions will be posted on the 'Silent Inspector' Bulletin Board.
- 4- Copies of the Design and Specifications are available to ACIC Members on demand.
- 5- The form will be a permanent ACIC record.
- 6- To reduce turnaround times to a minimum fax your response to 902-566-3133.

ACIC Log#: 30233

Description: Heat Exchanger Housing, E1200
 ASME Stamp, National Board Registered

This space is for Jurisdictional stamp and signature



ACIC DESIGN REVIEW

AUTHORISED BY THE DIRECTORS OF AQ CENTRAL

CRN: R6272.598701TN

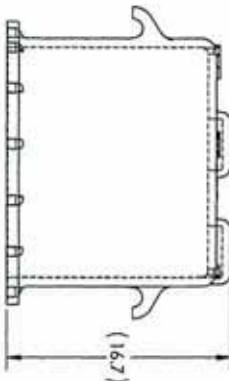
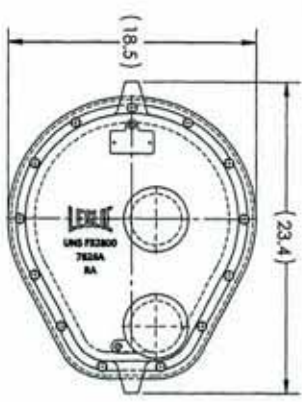
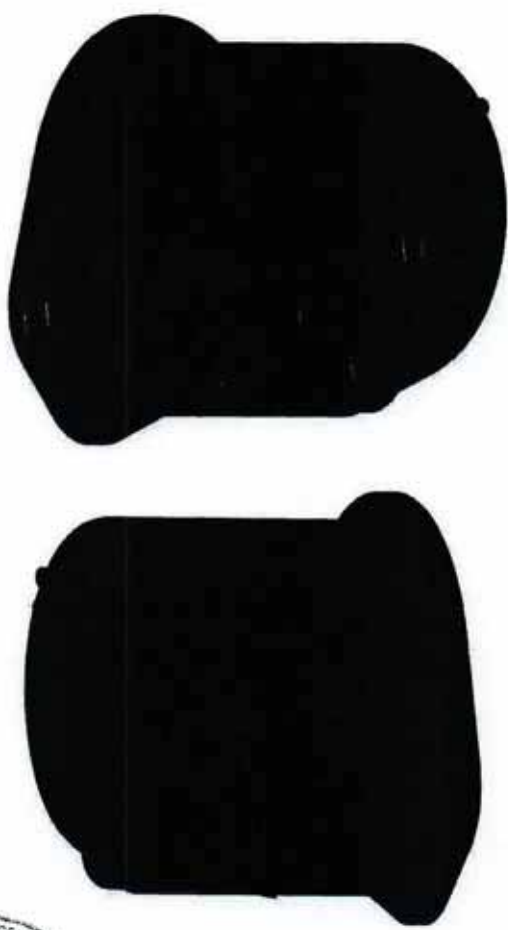
DATE: Sept 9, 2020

FILE: PL-97915

REGISTRATION IS A LEGAL REQUIREMENT UNDER THE ACT.
IT DOES NOT RELIEVE THE MANUFACTURER OF ANY
RESPONSIBILITY FOR THE PRODUCT DETAILED HEREIN.

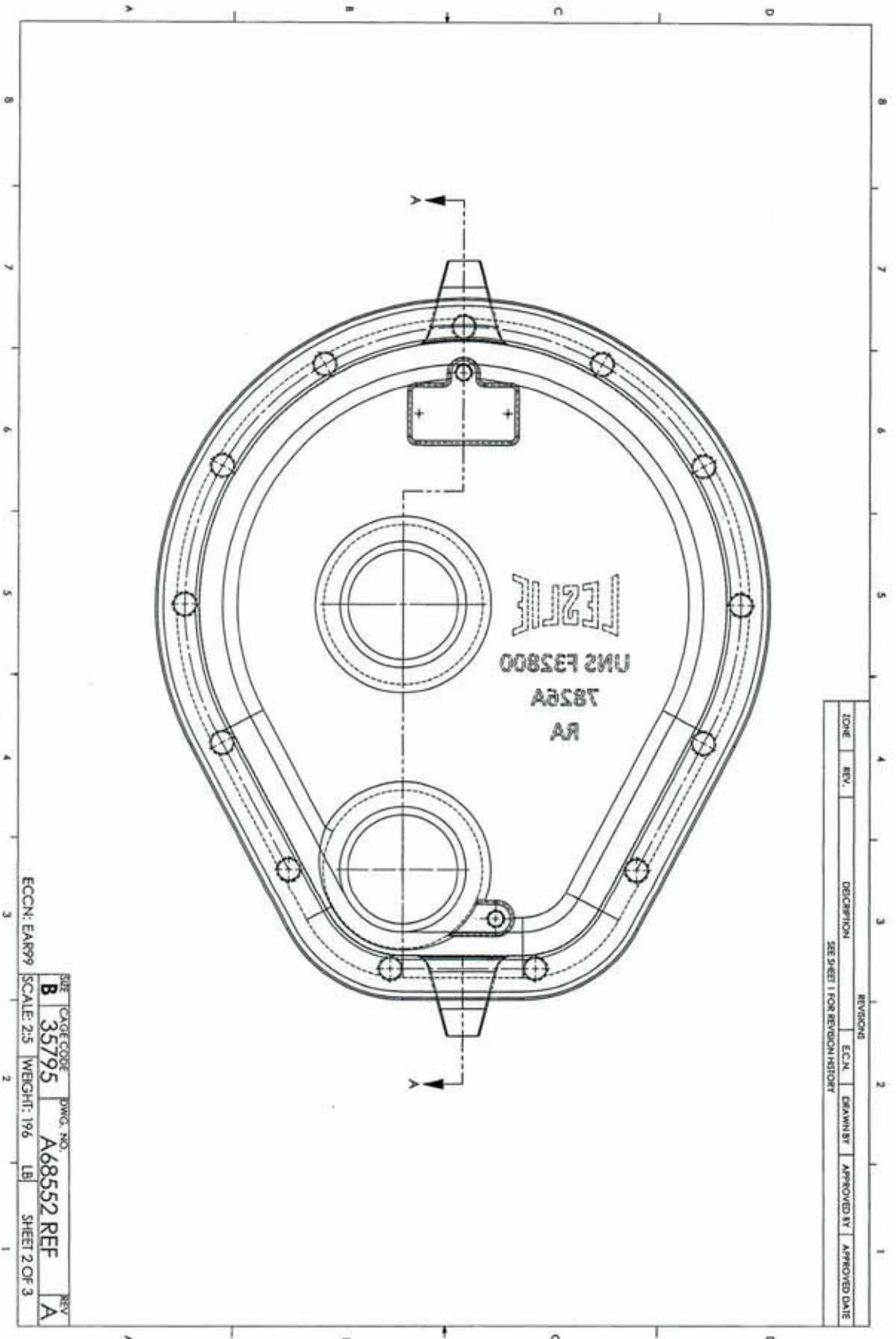
CASING MACHINING
SIZE: N/A
CLASS: N/A
PRODUCT: HEATER
MATERIAL: DUCTILE IRON

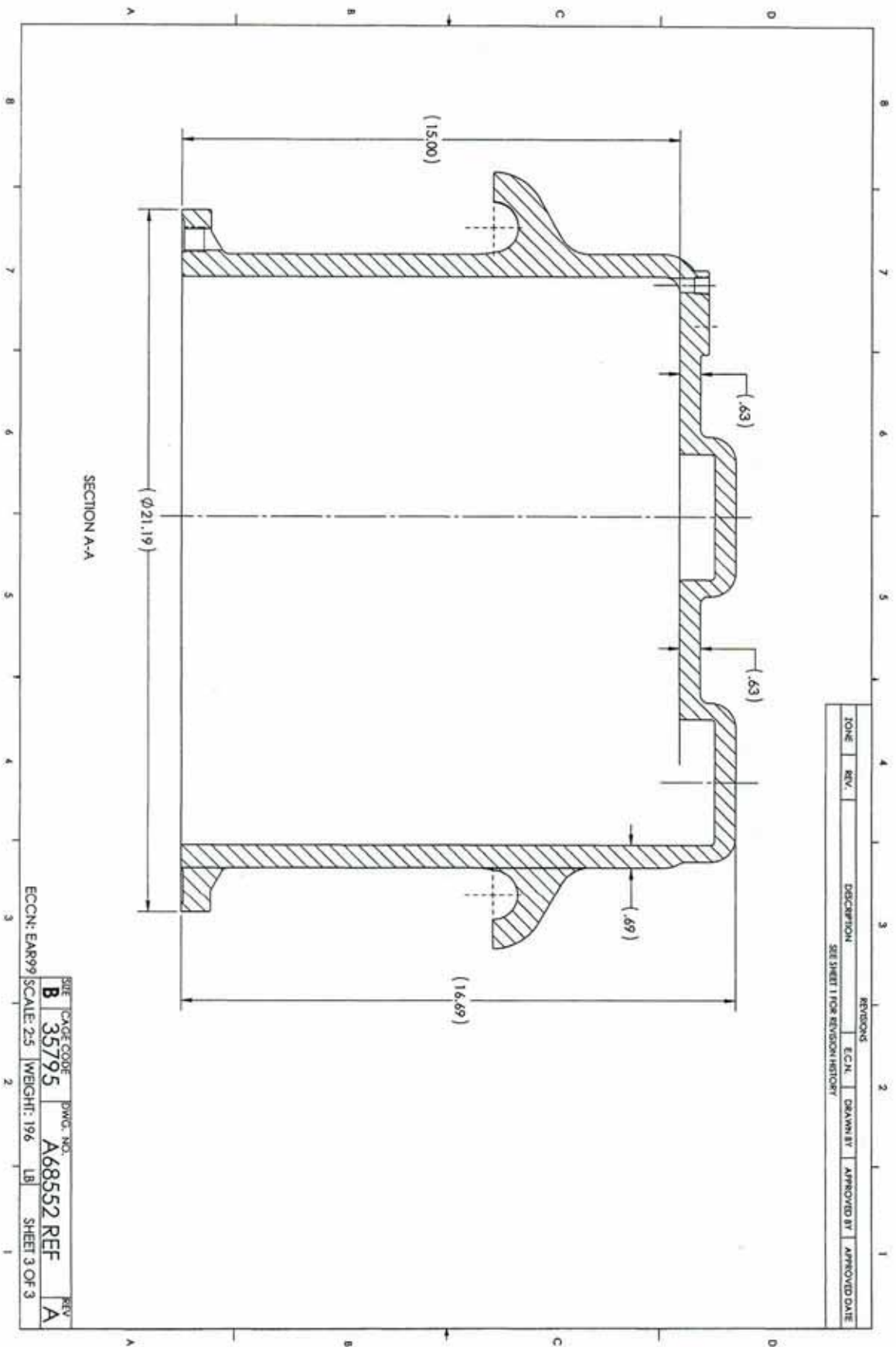
ZONE	REV.	DESCRIPTION REFERENCE	E.C.N.	DRAWN BY	APPROVED BY	APPROVED DATE
-	A		N/A	JAM	N/A	20160831



PART REFERENCE NO.	RAW MATERIAL REF NO.	CAD NO.	USED ON	REV	SH	REV STATUS	REV SH	THIRD ANGLE PROJECTION	TITLE																								
						A 1	2		CASING MACHINING																								
<p>REVISIONS</p> <table border="1"> <thead> <tr> <th>REV</th> <th>SH</th> <th>DESCRIPTION</th> <th>DATE</th> <th>BY</th> <th>CHKD</th> </tr> </thead> <tbody> <tr> <td>A</td> <td>1</td> <td></td> <td></td> <td></td> <td></td> </tr> <tr> <td>A</td> <td>2</td> <td></td> <td></td> <td></td> <td></td> </tr> <tr> <td>A</td> <td>3</td> <td></td> <td></td> <td></td> <td></td> </tr> </tbody> </table>										REV	SH	DESCRIPTION	DATE	BY	CHKD	A	1					A	2					A	3				
REV	SH	DESCRIPTION	DATE	BY	CHKD																												
A	1																																
A	2																																
A	3																																
<p>UNIFORM DIMENSIONS AND TOLERANCES PER ASME Y14.5-2009</p> <p>UNLESS OTHERWISE SPECIFIED:</p> <p>FINISH: ALL DIMENSIONS UNLESS OTHERWISE SPECIFIED</p> <p>UNLESS OTHERWISE SPECIFIED: DIMENSIONS ARE IN MILLIMETERS</p> <p>UNLESS OTHERWISE SPECIFIED: DIMENSIONS ARE IN INCHES</p> <p>UNLESS OTHERWISE SPECIFIED: DIMENSIONS ARE IN MILLIMETERS</p> <p>UNLESS OTHERWISE SPECIFIED: DIMENSIONS ARE IN INCHES</p> <p>UNLESS OTHERWISE SPECIFIED: DIMENSIONS ARE IN MILLIMETERS</p> <p>UNLESS OTHERWISE SPECIFIED: DIMENSIONS ARE IN INCHES</p> <p>UNLESS OTHERWISE SPECIFIED: DIMENSIONS ARE IN MILLIMETERS</p> <p>UNLESS OTHERWISE SPECIFIED: DIMENSIONS ARE IN INCHES</p>																																	
<p>THE DRAWING IS THE PROPERTY OF LESLIE CONTROLS, INC. AND IS LOANED TO YOU FOR YOUR INFORMATION ONLY. IT IS NOT TO BE REPRODUCED OR TRANSMITTED IN ANY FORM OR BY ANY MEANS, ELECTRONIC OR MECHANICAL, INCLUDING PHOTOCOPYING, RECORDING, OR BY ANY INFORMATION STORAGE AND RETRIEVAL SYSTEM, WITHOUT THE WRITTEN PERMISSION OF LESLIE CONTROLS, INC.</p>																																	
<p>REGISTRATION IS A LEGAL REQUIREMENT UNDER THE ACT. IT DOES NOT RELIEVE THE MANUFACTURER OF ANY RESPONSIBILITY FOR THE PRODUCT DETAILED HEREIN.</p>																																	
<p>SCALE: 1:5 WEIGHT: 196 LB SHEET 1 OF 3</p>																																	

LESLIE CONTROLS, INC. TAMPA, FLORIDA
A DIVISION OF CINCOR INTERNATIONAL





ACIC DESIGN REVIEW

AUTHORISED BY THE DIRECTORS OF ACI CENTRAL

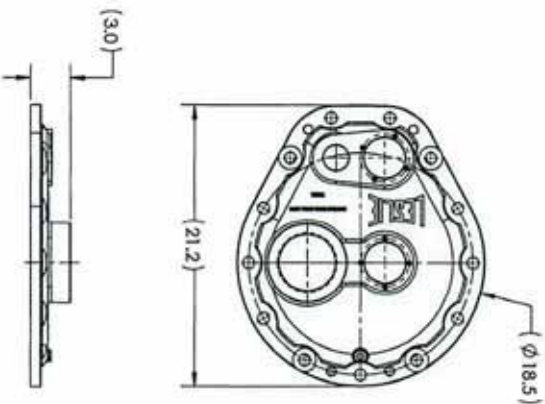
CRN: R6272.59870Y7U

DATE: Sept 9, 2020

FILE: PL-9791

REGISTRATION IS A LEGAL REQUIREMENT UNDER THE ACT.
IT DOES NOT RELIEVE THE MANUFACTURER OF ANY
RESPONSIBILITY FOR THE PRODUCT DETAILED HEREIN.

BASE PLATE MACHINING
SIZE: E1200
CLASS: N/A
PRODUCT: HEATER
MATERIAL: DUCTILE IRON



THIS DRAWING IS THE PROPERTY OF LESLIE CONTROLS & COMPANY. IT IS TO BE USED FOR THE MANUFACTURE OF THE PRODUCT SPECIFIED HEREIN. ANY REUSE OR MODIFICATION OF THIS DRAWING WITHOUT THE WRITTEN CONSENT OF LESLIE CONTROLS & COMPANY IS STRICTLY PROHIBITED.

DATE	DESCRIPTION	BY	CHKD

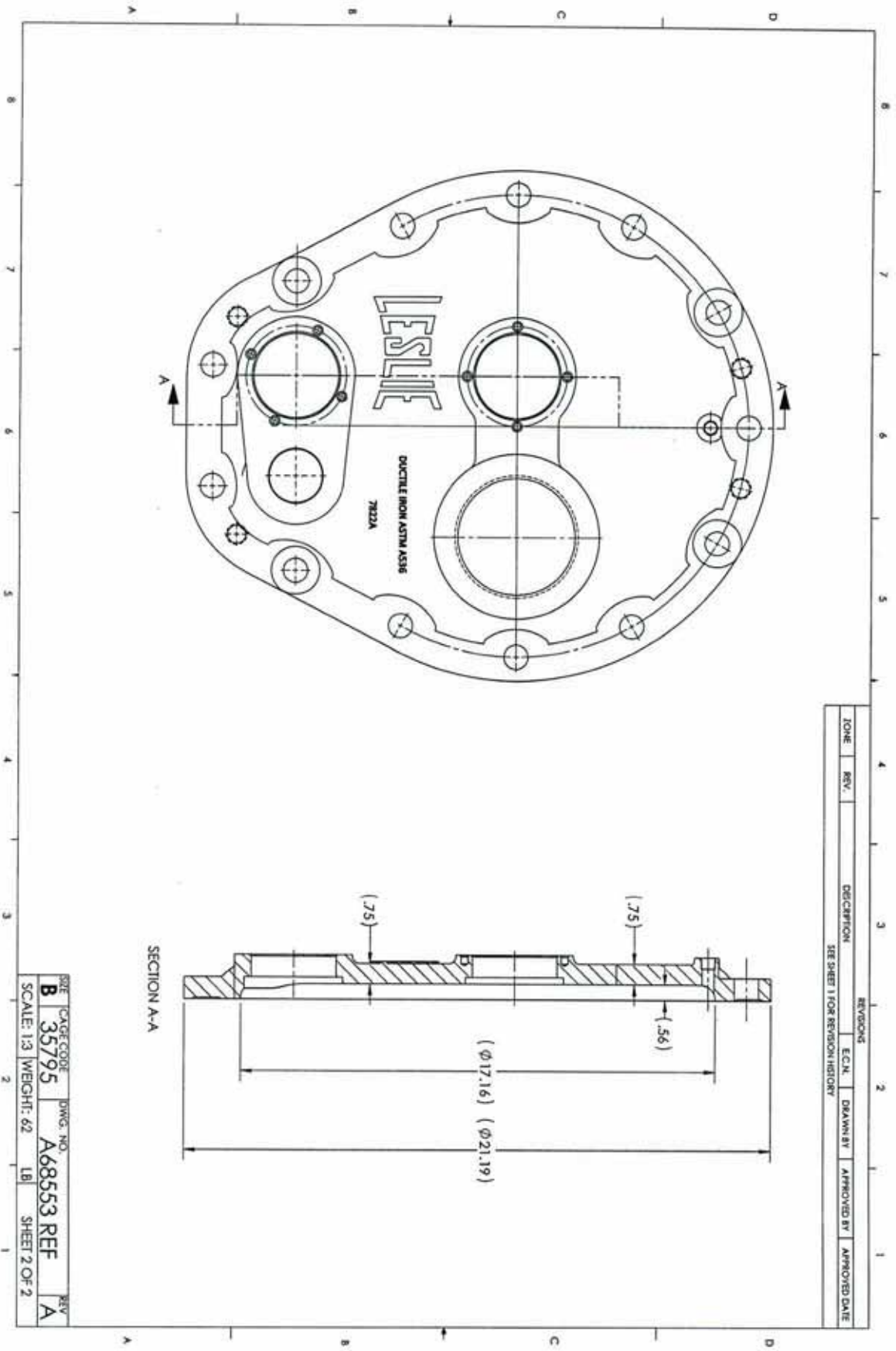
REV	SH	REV STATUS	THIRD ANGLE PROJECTION
A	1		AS SHOWN
A	2		AS SHOWN

DATE	20111113
SCALE	1:4
WEIGHT	62 LB
SHEET	1 OF 2

SIZE	CAGE CODE	DWG. NO.	REV
B	35795	A68553 REF	A

TITLE	LESLIE CONTROLS, INC
	TAMPA, FLORIDA
	A MEMBER OF CIRCOR INTERNATIONAL
TITLE	BASE PLATE MACHINING

1 2 3 4 5 6 7 8



ZONE	REV.	DESCRIPTION	REVISIONS	E.C.N.	DRAWN BY	APPROVED BY	APPROVED DATE
		SEE SHEET 1 FOR REVISION HISTORY					

SHEET	CAGE CODE	DWG. NO.	REV.
B	35795	A68553 REF	A
SCALE: 1:3 WEIGHT: .62 LB		SHEET 2 OF 2	