

ACI Central Inc.

20 McAulay Court, Charlottetown, PE C1A 9M7
 P.O. Box 53, Charlottetown, PE C1A 7K1. Phone: 902-566-1975, Fax: 902-566-3133

Recommendation to Register – Pressure Vessel Design

To: Dave McCarthy

Date: 09/08/2022

From: ACI Central Inc.

Manufacturer: Columbia Boiler Company
 390 Old Reading Pike
 Pottstown, PA 19464

Manufacturer #: PV-539

Subject: ACI Central Design Review

The product described on this form has satisfied the requirements for review of pressure vessel designs established by the Directors of ACI Central at their September 1994 meeting in Moncton, New Brunswick. We recommend this design be registered in your Jurisdiction under;

CRN: Z6564.2

Unit Description	Drawing Number	Service	Design Code
Steam Boiler	CT-1068, CT-1069	Non Lethal	ASME Sect I
Shell Side		Tube Side	
MAWP @ TEMP	MDMT @ MAWP	MAWP @ TEMP	MDMT @ MAWP
150 PSI @ 338 F			

Test Pressure: Hydro: 225 PSI Pneu:	Test Pressure: Hydro: Pneu:
--	--

Part	Material	Des. t"	Act. t"	CA"	% EF	RT	PWHT	Dimensions	Notes
Shell	SA 285C	0.375	0.375	-	100		yes	OD": 19"	Steam Capacity 328 lbs/hr
Heads	SA 285C	0.500	0.500	-	100			OAL": 63.125"	
Furnace	SA 285C	0.375	0.375	-	100			W":	
blast tube	SA 106 B	0.282	0.322	-				H":	
Couplings	SA 105							HS FT ² : 31.9	

<p>Notes:</p> <ol style="list-style-type: none"> 1- The return of this form, bearing the signature and stamp of the Jurisdiction will legally establish the CRN shown on this form. 2- A copy of the Design bearing the CRN will be sent to the Manufacturer. 3- Details including service conditions will be posted on the 'Silent Inspector' Bulletin Board. 4- Copies of the Design and Specifications are available to ACIC Members on demand. 5- The form will be a permanent ACIC record. 6- To reduce turnaround times to a minimum fax your response to 902-566-3133. <p>ACIC Log#: 33100</p> <p>Description: Steam Boiler, 19" OD, Model CT10 Slim ASME Stamp, National Board Registered</p>	<p>This space is for Jurisdictional stamp and signature</p> <p style="font-weight: bold; font-size: 1.2em;">ACCEPTED</p> <p style="font-weight: bold; font-size: 1.1em;">PROVINCE OF PRINCE EDWARD ISLAND COMMUNITIES, LAND & ENVIRONMENT</p> <p>C.R.N. <u>Z6564.29</u></p> <p>DATE: <u>SEPT 12/22</u></p> <p style="font-size: 1.5em; font-family: cursive;">[Signature]</p> <p style="font-weight: bold; font-size: 1.1em;">INSPECTION SERVICES SECTION BOILER/PRESSURE VESSEL BRANCH</p>
---	---

ACI Central Inc.

20 McAulay Court, Charlottetown, PE C1A 9M7
 P.O. Box 53, Charlottetown, PE C1A 7K1. Phone: 902-566-1975, Fax: 902-566-3133

Recommendation to Register – Pressure Vessel Design

To: Donnie Ehler

Date: 09/08/2022

From: ACI Central Inc.

Manufacturer: Columbia Boiler Company
 390 Old Reading Pike
 Pottstown, PA 19464

Manufacturer #: PV-539

Subject: ACI Central Design Review

The product described on this form has satisfied the requirements for review of pressure vessel designs established by the Directors of ACI Central at their September 1994 meeting in Moncton, New Brunswick. We recommend this design be registered in your Jurisdiction under;

CRN: Z6564.2

Unit Description	Drawing Number	Service	Design Code
Steam Boiler	CT-1068, CT-1069	Non Lethal	ASME Sect I

Shell Side

Tube Side

MAWP @ TEMP	MDMT @ MAWP	MAWP @ TEMP	MDMT @ MAWP
150 PSI @ 338 F			

Test Pressure: Hydro: 225 PSI Pneu:	Test Pressure: Hydro: Pneu:
--	--

Part	Material	Des. t"	Act. t"	CA"	% EF	RT	PWHT	Dimensions	Notes
Shell	SA 285C	0.375	0.375	-	100		yes	OD": 19"	Steam Capacity 328 lbs/hr
Heads	SA 285C	0.500	0.500	-	100			OAL": 63.125"	
Furnace	SA 285C	0.375	0.375	-	100			W":	
blast tube	SA 106 B	0.282	0.322	-				H":	
Couplings	SA 105							HS FT²: 31.9	

Notes:

- 1- The return of this form, bearing the signature and stamp of the Jurisdiction will legally establish the CRN shown on this form.
- 2- A copy of the Design bearing the CRN will be sent to the Manufacturer.
- 3- Details including service conditions will be posted on the 'Silent Inspector' Bulletin Board.
- 4- Copies of the Design and Specifications are available to ACIC Members on demand.
- 5- The form will be a permanent ACIC record.
- 6- To reduce turnaround times to a minimum fax your response to 902-566-3133.

ACIC Log#: 33100

Description: Steam Boiler, 19" OD, Model CT10 Slim
 ASME Stamp, National Board Registered

This space is for Jurisdictional stamp and signature



Date Sept. 9/22
 C.R.N. Z6564.28
 Desg. CT-1068, CT-1069
 Signed Yvonne Perry



ACI Central Inc.

20 McAulay Court, Charlottetown, PE C1A 9M7
 P.O. Box 53, Charlottetown, PE C1A 7K1. Phone: 902-566-1975, Fax: 902-566-3133

Recommendation to Register – Pressure Vessel Design

To: Eben Creaser

Date: 09/08/2022

From: ACI Central Inc.

Manufacturer: Columbia Boiler Company
 390 Old Reading Pike
 Pottstown, PA 19464

Manufacturer #: PV-539

Subject: ACI Central Design Review

The product described on this form has satisfied the requirements for review of pressure vessel designs established by the Directors of ACI Central at their September 1994 meeting in Moncton, New Brunswick. We recommend this design be registered in your Jurisdiction under;

CRN: Z6564.2

Unit Description	Drawing Number	Service	Design Code
Steam Boiler	CT-1068, CT-1069	Non Lethal	ASME Sect I

Shell Side

Tube Side

MAWP @ TEMP	MDMT @ MAWP	MAWP @ TEMP	MDMT @ MAWP
150 PSI @ 338 F			

Test Pressure: Hydro: 225 PSI	Pneu:	Test Pressure: Hydro:	Pneu:
-------------------------------	-------	-----------------------	-------

Part	Material	Des. t"	Act. t"	CA"	% EF	RT	PWHT	Dimensions	Notes
Shell	SA 285C	0.375	0.375	-	100		yes	OD": 19"	Steam Capacity 328 lbs/hr
Heads	SA 285C	0.500	0.500	-	100			OAL": 63.125"	
Furnace	SA 285C	0.375	0.375	-	100			W":	
blast tube	SA 106 B	0.282	0.322	-				H":	
Couplings	SA 105							HS FT ² : 31.9	

Notes:

- 1- The return of this form, bearing the signature and stamp of the Jurisdiction will legally establish the CRN shown on this form.
- 2- A copy of the Design bearing the CRN will be sent to the Manufacturer.
- 3- Details including service conditions will be posted on the 'Silent Inspector' Bulletin Board.
- 4- Copies of the Design and Specifications are available to ACIC Members on demand.
- 5- The form will be a permanent ACIC record.
- 6- To reduce turnaround times to a minimum fax your response to 902-566-3133.

ACIC Log#: 33100

Description: Steam Boiler, 19" OD, Model CT10 Slim
 ASME Stamp, National Board Registered

This space is for Jurisdictional stamp and signature

New Brunswick
 Nouveau Brunswick

DEPT OF JUSTICE PUBLIC SAFETY
 BOILER & PRESSURE VESSEL ACT

REGISTRATION ONLY

CRN: Z6564.27

Eben Creaser
 CHIEF BOILER INSPECTOR

DATE: 9/9/22

BLRs PVs

FITTINGS NUCLEAR COMPONENTS

Sect. 2.0-BPV Rev. 1 06/2003

ACI Central Inc.

20 McAulay Court, Charlottetown, PE C1A 9M7
 P.O. Box 53, Charlottetown, PE C1A 7K1. Phone: 902-566-1975, Fax: 902-566-3133

Recommendation to Register – Pressure Vessel Design

To: Engineering&Inspection Service

Date: 09/08/2022

From: ACI Central Inc.

Manufacturer: Columbia Boiler Company
 390 Old Reading Pike
 Pottstown, PA 19464

Manufacturer #: PV-539

Subject: ACI Central Design Review

The product described on this form has satisfied the requirements for review of pressure vessel designs established by the Directors of ACI Central at their September 1994 meeting in Moncton, New Brunswick. We recommend this design be registered in your Jurisdiction under;

CRN: Z6564.2

Unit Description	Drawing Number	Service	Design Code
Steam Boiler	CT-1068, CT-1069	Non Lethal	ASME Sect I

Shell Side

Tube Side

MAWP @ TEMP	MDMT @ MAWP	MAWP @ TEMP	MDMT @ MAWP
150 PSI @ 338 F			

Test Pressure: Hydro: 225 PSI Pneu:	Test Pressure: Hydro: Pneu:
--	--

Part	Material	Des. t"	Act. t"	CA"	% EF	RT	PWHT	Dimensions	Notes
Shell	SA 285C	0.375	0.375	-	100		yes	OD": 19"	Steam Capacity 328 lbs/hr
Heads	SA 285C	0.500	0.500	-	100			OAL": 63.125"	
Furnace	SA 285C	0.375	0.375	-	100			W":	
blast tube	SA 106 B	0.282	0.322	-				H":	
Couplings	SA 105							HS FT²: 31.9	

Notes:

- 1- The return of this form, bearing the signature and stamp of the Jurisdiction will legally establish the CRN shown on this form.
- 2- A copy of the Design bearing the CRN will be sent to the Manufacturer.
- 3- Details including service conditions will be posted on the 'Silent Inspector' Bulletin Board.
- 4- Copies of the Design and Specifications are available to ACIC Members on demand.
- 5- The form will be a permanent ACIC record.
- 6- To reduce turnaround times to a minimum fax your response to 902-566-3133.

ACIC Log#: 33100

Description: Steam Boiler, 19" OD, Model CT10 Slim
 ASME Stamp, National Board Registered

This space is for Jurisdictional stamp and signature



Digital Government and Service NL

Registered Z6564.20

Date 26-Sep-2022

Engineering and Inspection Services

Registered by David Jucker

**UNDER THE AUTHORITY OF THE
 PUBLIC SAFETY ACT AND
 THE BOILER, PRESSURE VESSEL AND
 COMPRESSED GAS REGULATIONS**

ACI Central Inc.

20 McAulay Court, Charlottetown, PE C1A 9M7
 P.O. Box 53, Charlottetown, PE C1A 7K1. Phone: 902-566-1975, Fax: 902-566-3133

Recommendation to Register – Pressure Vessel Design

To: Blair Rawlings

Date: 09/08/2022

From: ACI Central Inc.

Manufacturer: Columbia Boiler Company
 390 Old Reading Pike
 Pottstown, PA 19464

Manufacturer #: PV-539

Subject: ACI Central Design Review

The product described on this form has satisfied the requirements for review of pressure vessel designs established by the Directors of ACI Central at their September 1994 meeting in Moncton, New Brunswick. We recommend this design be registered in your Jurisdiction under;

CRN: Z6564.2

Unit Description	Drawing Number	Service	Design Code
Steam Boiler	CT-1068, CT-1069	Non Lethal	ASME Sect I

Shell Side

Tube Side

MAWP @ TEMP	MDMT @ MAWP	MAWP @ TEMP	MDMT @ MAWP
150 PSI @ 338 F			

Test Pressure: Hydro: 225 PSI Pneu:	Test Pressure: Hydro: Pneu:
-------------------------------------	-----------------------------

Part	Material	Des. t"	Act. t"	CA"	% EF	RT	PWHT	Dimensions	Notes
Shell	SA 285C	0.375	0.375	-	100		yes	OD": 19"	Steam Capacity 328 lbs/hr
Heads	SA 285C	0.500	0.500	-	100			OAL": 63.125"	
Furnace	SA 285C	0.375	0.375	-	100			W":	
blast tube	SA 106 B	0.282	0.322	-				H":	
Couplings	SA 105							HS FT ² : 31.9	

Notes:

- The return of this form, bearing the signature and stamp of the Jurisdiction will legally establish the CRN shown on this form.
- A copy of the Design bearing the CRN will be sent to the Manufacturer.
- Details including service conditions will be posted on the 'Silent Inspector' Bulletin Board.
- Copies of the Design and Specifications are available to ACIC Members on demand.
- The form will be a permanent ACIC record.
- To reduce turnaround times to a minimum fax your response to 902-566-3133.

ACIC Log#: 33100

Description: Steam Boiler, 19" OD, Model CT10 Slim
 ASME Stamp, National Board Registered

This space is for Jurisdictional stamp and signature



ACI Central Inc.

20 McAulay Court, Charlottetown, PE C1A 9M7
 P.O. Box 53, Charlottetown, PE C1A 7K1. Phone: 902-566-1975, Fax: 902-566-3133

Recommendation to Register – Pressure Vessel Design

To: Matthias Mailman

Date: 09/08/2022

From: ACI Central Inc.

Manufacturer: Columbia Boiler Company
 390 Old Reading Pike
 Pottstown, PA 19464

Manufacturer #: PV-539

Subject: ACI Central Design Review

The product described on this form has satisfied the requirements for review of pressure vessel designs established by the Directors of ACI Central at their September 1994 meeting in Moncton, New Brunswick. We recommend this design be registered in your Jurisdiction under;

CRN: Z6564.2

Unit Description	Drawing Number	Service	Design Code
Steam Boiler	CT-1068, CT-1069	Non Lethal	ASME Sect I

Shell Side		Tube Side	
MAWP @ TEMP	MDMT @ MAWP	MAWP @ TEMP	MDMT @ MAWP
150 PSI @ 338 F			

Test Pressure: Hydro: 225 PSI Pneu:	Test Pressure: Hydro: Pneu:
-------------------------------------	-----------------------------

Part	Material	Des. t"	Act. t"	CA"	% EF	RT	PWHT	Dimensions	Notes
Shell	SA 285C	0.375	0.375	-	100		yes	OD": 19"	Steam Capacity 328 lbs/hr
Heads	SA 285C	0.500	0.500	-	100			OAL": 63.125"	
Furnace	SA 285C	0.375	0.375	-	100			W":	
blast tube	SA 106 B	0.282	0.322	-				H":	
Couplings	SA 105							HS FT": 31.9	

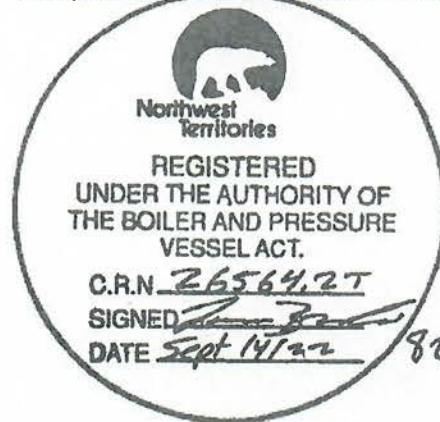
Notes:

- 1- The return of this form, bearing the signature and stamp of the Jurisdiction will legally establish the CRN shown on this form.
- 2- A copy of the Design bearing the CRN will be sent to the Manufacturer.
- 3- Details including service conditions will be posted on the 'Silent Inspector' Bulletin Board.
- 4- Copies of the Design and Specifications are available to ACIC Members on demand.
- 5- The form will be a permanent ACIC record.
- 6- To reduce turnaround times to a minimum fax your response to 902-566-3133.

ACIC Log#: 33100

Description: Steam Boiler, 19" OD, Model CT10 Slim
 ASME Stamp, National Board Registered

This space is for Jurisdictional stamp and signature



ACI Central Inc.

20 McAulay Court, Charlottetown, PE C1A 9M7
 P.O. Box 53, Charlottetown, PE C1A 7K1. Phone: 902-566-1975, Fax: 902-566-3133

Recommendation to Register – Pressure Vessel Design

To: Muhammad Wani

Date: 09/08/2022

From: ACI Central Inc.

Manufacturer: Columbia Boiler Company
 390 Old Reading Pike
 Pottstown, PA 19464

Manufacturer #: PV-539

Subject: ACI Central Design Review

The product described on this form has satisfied the requirements for review of pressure vessel designs established by the Directors of ACI Central at their September 1994 meeting in Moncton, New Brunswick. We recommend this design be registered in your Jurisdiction under;

CRN: Z6564.2

Unit Description	Drawing Number	Service	Design Code
Steam Boiler	CT-1068, CT-1069	Non Lethal	ASME Sect I
Shell Side		Tube Side	
MAWP @ TEMP	MDMT @ MAWP	MAWP @ TEMP	MDMT @ MAWP
150 PSI @ 338 F			

Test Pressure: Hydro: 225 PSI Pneu:	Test Pressure: Hydro: Pneu:
--	--

Part	Material	Des. t"	Act. t"	CA"	% EF	RT	PWHT	Dimensions	Notes
Shell	SA 285C	0.375	0.375	-	100		yes	OD": 19"	Steam Capacity 328 lbs/hr
Heads	SA 285C	0.500	0.500	-	100			OAL": 63.125"	
Furnace	SA 285C	0.375	0.375	-	100			W":	
blast tube	SA 106 B	0.282	0.322	-				H":	
Couplings	SA 105							HS FT ² : 31.9	


Notes:

- 1- The return of this form, bearing the signature and stamp of the Jurisdiction will legally establish the CRN shown on this form. A copy of the Design bearing the CRN will be sent to the Manufacturer.
- 2- Details including service conditions will be posted on the 'Silent Inspector' Bulletin Board.
- 3- Copies of the Design and Specifications are available to ACIC Members on demand.
- 4- The form will be a permanent ACIC record.
- 5- To reduce turnaround times to a minimum fax your response to 902-566-3133.

ACIC Log#: 33100

Description: Steam Boiler, 19" OD, Model CT10 Slim
 ASME Stamp, National Board Registered

This space is for Jurisdictional stamp and signature



Nunavut

NUNAVUT
 Boilers and
 Pressure Vessels Act

REGISTERED

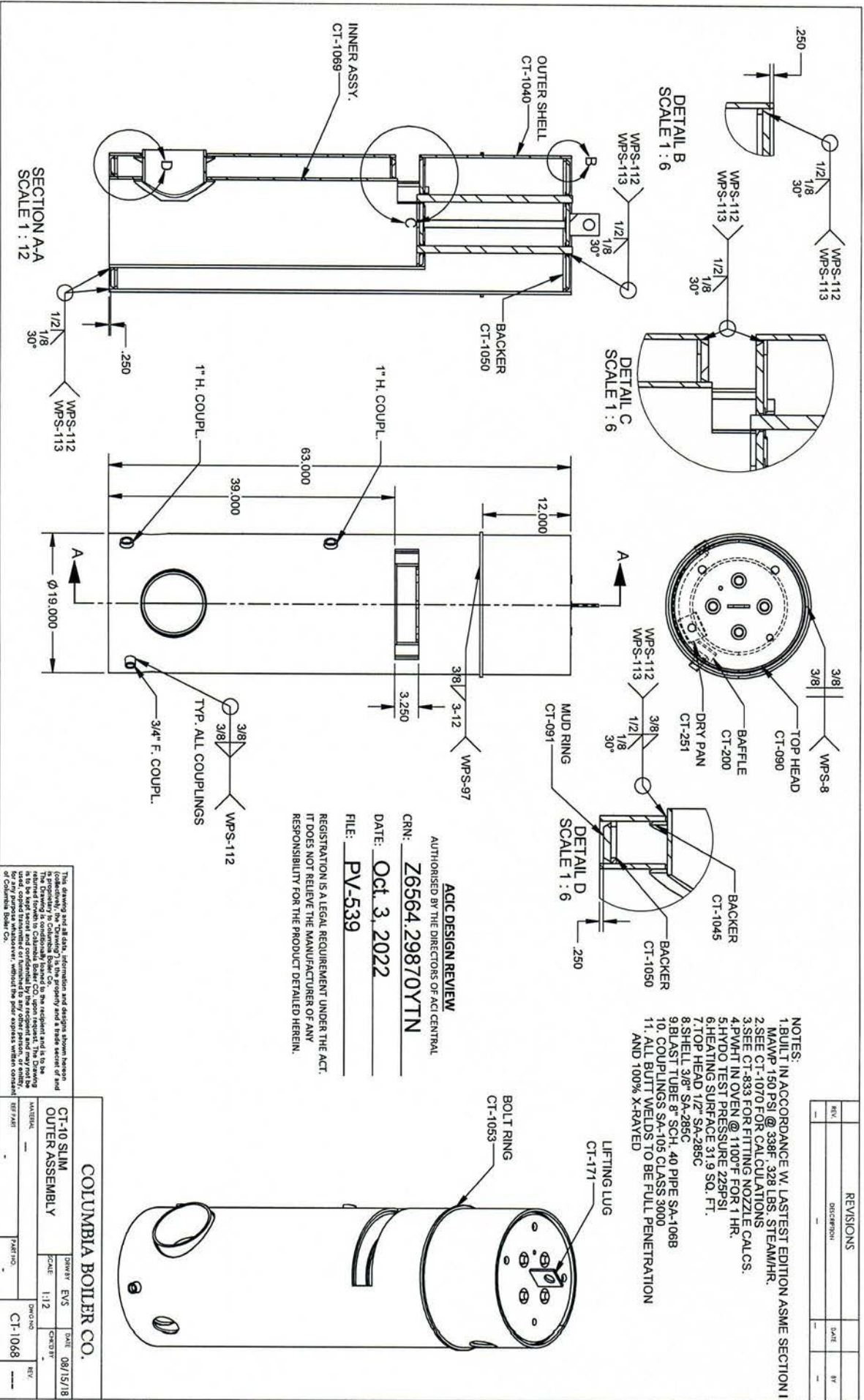
CRN Z6564.2N

Date Sept 08, 2022

Signed [Signature]

Chief Inspector

Territorial Registration Fee



- NOTES:
- BUILT IN ACCORDANCE W/ LATEST EDITION ASME SECTION I
 - MAWP 150 PSIG @ 338F - 328 LBS. STEAM/HR.
 - SEE CT-1070 FOR CALCULATIONS
 - SEE CT-833 FOR FITTING NOZZLE CALCS.
 - PHWT IN OVEN @ 1100F FOR 1 HR.
 - HYDRO TEST PRESSURE 225PSI
 - HEATING SURFACE 31.9 SQ. FT.
 - TOP HEAD 1/2" SA-285C
 - SHELL 3/8" SA-285C
 - BLAST TUBE 8" SCH. 40 PIPE SA-106B
 - COUPLINGS SA-105 CLASS 3000
 - ALL BUTT WELDS TO BE FULL PENETRATION AND 100% X-RAYED

REVISIONS			
REV.	DESCRIPTION	DATE	BY

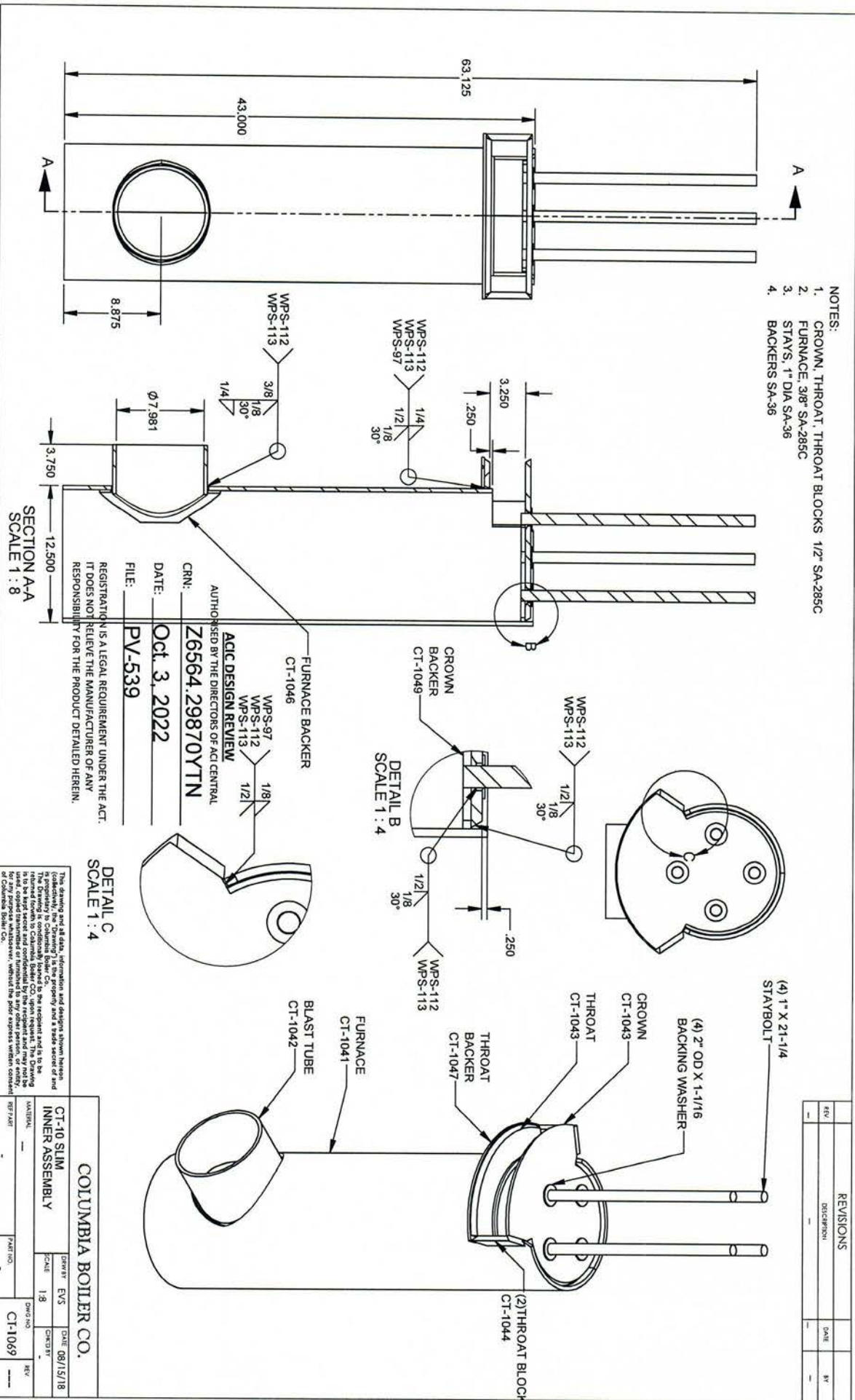
ACIC DESIGN REVIEW
 AUTHORIZED BY THE DIRECTORS OF ACI CENTRAL
 CRN: Z6564.29870YTN
 DATE: Oct. 3, 2022
 FILE: PV-539

REGISTRATION IS A LEGAL REQUIREMENT UNDER THE ACT.
 IT DOES NOT RELIEVE THE MANUFACTURER OF ANY
 RESPONSIBILITY FOR THE PRODUCT DETAILED HEREIN.

This drawing and all data, information and design shown herein are the property of Columbia Boiler Co. and are not to be reproduced, stored in a retrieval system, or transmitted in any form or by any means, electronic, mechanical, photocopying, recording, or by any information storage and retrieval system, without the prior written permission of Columbia Boiler Co.

COLUMBIA BOILER CO.			
CT-10 SLIM OUTER ASSEMBLY	DRAWN BY: EVS	DATE: 08/15/18	
SCALE: 1:12	CHECKED BY:		
PART NO:	DWG NO: CT-1068	REV:	

- NOTES:
1. CROWN, THROAT, THROAT BLOCKS 1/2" SA-285C
 2. FURNACE 3/8" SA-285C
 3. STAYS, 1" DIA SA-36
 4. BACKERS SA-36



REGISTRATION IS A LEGAL REQUIREMENT UNDER THE ACT.
IT DOES NOT RELIEVE THE MANUFACTURER OF ANY
RESPONSIBILITY FOR THE PRODUCT DETAILED HEREIN.

FILE: PV-539

DATE: Oct. 3, 2022

CRN: Z6564.29870YTN

AUTHORISED BY THE DIRECTORS OF A.C.I. CENTRAL
AGIC DESIGN REVIEW

This drawing and all data, information and design shown herein
is the property of Columbia Boiler Co. and is to be kept
secret and confidential by the recipient and it is to be
kept secret and confidential by the recipient and may not be
reproduced, copied, transmitted or otherwise disclosed in any
manner without the prior written consent of Columbia Boiler Co.

COLUMBIA BOILER CO.	
CT-10 SLIM INNER ASSEMBLY	DRAWN BY: EVS
SCALE: 1/8	DATE: 08/15/18
DWG NO: CT-1069	REV: _____

REVISIONS	
REV	DESCRIPTION