

# ACI Central Inc.

20 McAulay Court, Charlottetown, PE C1A 9M7  
 P.O. Box 53, Charlottetown, PE C1A 7K1. Phone: 902-566-1975, Fax: 902-566-3133

## Recommendation to Register – Pressure Vessel Design

**To:** Nancy Chlasson

**Date:** 11/21/2023

**From:** ACI Central Inc.

**Manufacturer:** Watson McDaniel Company  
 428 Jones Blvd.  
 Pottstown, PA 19464

**Manufacturer #:** PV-1188

**Subject: ACI Central Design Review**

The product described on this form has satisfied the requirements for review of pressure vessel designs established by the Directors of ACI Central at their September 1994 meeting in Moncton, New Brunswick. We recommend this design be registered in your Jurisdiction under;

**CRN: R9596.5**

Unit Description	Drawing Number	Service	Design Code
Pressure Vessel	2320400 RevX, 1562400 RevD	Non Lethal	ASME Sect VIII Div. 1

**Shell Side**

**Tube Side**

MAWP @ TEMP	MDMT @ MAWP	MAWP @ TEMP	MDMT @ MAWP
250 PSI/FV @ 650 F	0 F @ 250 PSI		

Test Pressure: Hydro: 325 PSI    Pneu:	Test Pressure: Hydro:                      Pneu:
----------------------------------------	--------------------------------------------------

Part	Material	Des. t"	Act. t"	CA"	% EF	RT	PWHT	Dimensions	Notes
Shell	SA 53 B	0.219	0.250	0.025	85			OD": 16"	
Head	SA 516 70	0.235	0.250	0.025	85			OAL":	
Head	SA 516 70	1.482	1.500	0.025	100			W":	
Cover	SA 216 WCB	0.750	0.750	0.025	100			H": 29.31"	
								HS FT²:	

**Notes:**

- 1- The return of this form, bearing the signature and stamp of the Jurisdiction will legally establish the CRN shown on this form.
- 2- A copy of the Design bearing the CRN will be sent to the Manufacturer.
- 3- Details including service conditions will be posted on the 'Silent Inspector' Bulletin Board.
- 4- Copies of the Design and Specifications are available to ACIC Members on demand.
- 5- The form will be a permanent ACIC record.
- 6- To reduce turnaround times to a minimum fax your response to 902-566-3133.

**ACIC Log#:** 34828

**Description:** Pressure Vessel, 16" OD  
 ASME Stamp, National Board Registered

This space is for Jurisdictional stamp and signature

**ACCEPTED**  
**PROVINCE OF PRINCE EDWARD ISLAND**  
**COMMUNITIES, LAND & ENVIRONMENT**

C.R.N. R9596.59

DATE: Nov 24 2023

*[Signature]*  
**INSPECTION SERVICES SECTION**  
**BOILER/PRESSURE VESSEL BRANCH**

# ACI Central Inc.

20 McAulay Court, Charlottetown, PE C1A 9M7  
P.O. Box 53, Charlottetown, PE C1A 7K1. Phone: 902-566-1975, Fax: 902-566-3133

## Recommendation to Register – Pressure Vessel Design

**To:** Donnie Ehler

**Date:** 11/21/2023

**From:** ACI Central Inc.

**Manufacturer:** Watson McDaniel Company  
428 Jones Blvd.  
Pottstown, PA 19464

**Manufacturer #:** PV-1188

**Subject: ACI Central Design Review**

The product described on this form has satisfied the requirements for review of pressure vessel designs established by the Directors of ACI Central at their September 1994 meeting in Moncton, New Brunswick. We recommend this design be registered in your Jurisdiction under:

**CRN: R9596.5**

Unit Description	Drawing Number	Service	Design Code
Pressure Vessel	2320400 RevX, 1562400 RevD	Non Lethal	ASME Sect VIII Div. 1

Shell Side		Tube Side	
MAWP @ TEMP	MDMT @ MAWP	MAWP @ TEMP	MDMT @ MAWP
250 PSI/FV @ 650 F	0 F @ 250 PSI		

Test Pressure: Hydro: 325 PSI    Pneu:	Test Pressure: Hydro:                      Pneu:
----------------------------------------	--------------------------------------------------

Part	Material	Des. t"	Act. t"	CA"	% EF	RT	PWHT	Dimensions	Notes
Shell	SA 53 B	0.219	0.250	0.025	85			OD": 16"	
Head	SA 516 70	0.235	0.250	0.025	85			OAL":	
Head	SA 516 70	1.482	1.500	0.025	100			W":	
Cover	SA 216 WCB	0.750	0.750	0.025	100			H": 29.31"	
								HS FT²:	

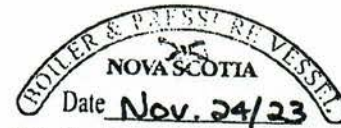
**Notes:**

- 1- The return of this form, bearing the signature and stamp of the Jurisdiction will legally establish the CRN shown on this form.
- 2- A copy of the Design bearing the CRN will be sent to the Manufacturer.
- 3- Details including service conditions will be posted on the 'Silent Inspector' Bulletin Board.
- 4- Copies of the Design and Specifications are available to ACIC Members on demand.
- 5- The form will be a permanent ACIC record.
- 6- To reduce turnaround times to a minimum fax your response to 902-566-3133.

**ACIC Log#:** 34828

**Description:** Pressure Vessel, 16" OD  
ASME Stamp, National Board Registered

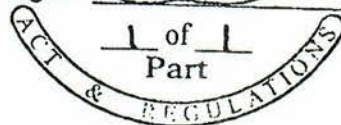
This space is for Jurisdictional stamp and signature



C.R.N. R9596.58

Dwg. 2320400 Rev X, 1562400 Rev. D

Signed [Signature]



# ACI Central Inc.

20 McAulay Court, Charlottetown, PE C1A 9M7  
 P.O. Box 53, Charlottetown, PE C1A 7K1. Phone: 902-566-1975, Fax: 902-566-3133

## Recommendation to Register – Pressure Vessel Design

To: Eben Creaser

Date: 11/21/2023

From: ACI Central Inc.

Manufacturer: Watson McDaniel Company  
 428 Jones Blvd.  
 Pottstown, PA 19464

Manufacturer #: PV-1188

Subject: ACI Central Design Review

The product described on this form has satisfied the requirements for review of pressure vessel designs established by the Directors of ACI Central at their September 1994 meeting in Moncton, New Brunswick. We recommend this design be registered in your Jurisdiction under;

**CRN: R9596.5**

Unit Description	Drawing Number	Service	Design Code
Pressure Vessel	2320400 RevX, 1562400 RevD	Non Lethal	ASME Sect VIII Div. 1

**Shell Side**

**Tube Side**

MAWP @ TEMP	MDMT @ MAWP	MAWP @ TEMP	MDMT @ MAWP
250 PSI/FV @ 650 F	0 F @ 250 PSI		

Test Pressure: Hydro: 325 PSI	Pneu:	Test Pressure: Hydro:	Pneu:
-------------------------------	-------	-----------------------	-------

Part	Material	Des. t"	Act. t"	CA"	% EF	RT	PWHT	Dimensions	Notes
Shell	SA 53 B	0.219	0.250	0.025	85			OD": 16"	
Head	SA 516 70	0.235	0.250	0.025	85			OAL":	
Head	SA 516 70	1.482	1.500	0.025	100			W":	
Cover	SA 216 WCB	0.750	0.750	0.025	100			H": 29.31"	
								HS FT²:	

**Notes:**

- 1- The return of this form, bearing the signature and stamp of the Jurisdiction will legally establish the CRN shown on this form.
- 2- A copy of the Design bearing the CRN will be sent to the Manufacturer.
- 3- Details including service conditions will be posted on the 'Silent Inspector' Bulletin Board.
- 4- Copies of the Design and Specifications are available to ACIC Members on demand.
- 5- The form will be a permanent ACIC record.
- 6- To reduce turnaround times to a minimum fax your response to 902-566-3133.

ACIC Log#: 34828

Description: Pressure Vessel, 16" OD  
 ASME Stamp, National Board Registered

This space is for Jurisdictional stamp and signature



DEPT OF JUSTICE PUBLIC SAFETY  
 BOILER & PRESSURE VESSEL ACT

REGISTRATION ONLY

CRN R9596-57

Eben Creaser  
 CHIEF BOILER INSPECTOR

DATE 11/24/23

BLRs  PVs

FITTINGS  LIFT  REPAIRS  REPAIRS 1 06/2003

# ACI Central Inc.

20 McAulay Court, Charlottetown, PE C1A 9M7  
 P.O. Box 53, Charlottetown, PE C1A 7K1. Phone: 902-566-1975, Fax: 902-566-3133

## Recommendation to Register – Pressure Vessel Design

To: Engineering & Inspection Service

Date: 11/21/2023

From: ACI Central Inc.

Manufacturer: Watson McDaniel Company  
 428 Jones Blvd.  
 Pottstown, PA 19464

Manufacturer #: PV-1188

**Subject: ACI Central Design Review**

The product described on this form has satisfied the requirements for review of pressure vessel designs established by the Directors of ACI Central at their September 1994 meeting in Moncton, New Brunswick. We recommend this design be registered in your Jurisdiction under;

**CRN: R9596.5**

Unit Description	Drawing Number	Service	Design Code
Pressure Vessel	2320400 RevX, 1562400 RevD	Non Lethal	ASME Sect VIII Div. 1

Shell Side		Tube Side	
MAWP @ TEMP	MDMT @ MAWP	MAWP @ TEMP	MDMT @ MAWP
250 PSI/FV @ 650 F	0 F @ 250 PSI		

Test Pressure: Hydro: 325 PSI    Pneu:	Test Pressure: Hydro:                      Pneu:
----------------------------------------	--------------------------------------------------

Part	Material	Des. t"	Act. t"	CA"	% EF	RT	PWHT	Dimensions	Notes
Shell	SA 53 B	0.219	0.250	0.025	85			OD": 16"	
Head	SA 516 70	0.235	0.250	0.025	85			OAL":	
Head	SA 516 70	1.482	1.500	0.025	100			W":	
Cover	SA 216 WCB	0.750	0.750	0.025	100			H": 29.31"	
								HS FT²:	

**Notes:**

- 1- The return of this form, bearing the signature and stamp of the Jurisdiction will legally establish the CRN shown on this form.
- 2- A copy of the Design bearing the CRN will be sent to the Manufacturer.
- 3- Details including service conditions will be posted on the 'Silent Inspector' Bulletin Board.
- 4- Copies of the Design and Specifications are available to ACIC Members on demand.
- 5- The form will be a permanent ACIC record.
- 6- To reduce turnaround times to a minimum fax your response to 902-566-3133.

**ACIC Log#:** 34828

**Description:** Pressure Vessel, 16" OD  
 ASME Stamp, National Board Registered

This space is for Jurisdictional stamp and signature

Newfoundland  
 Labrador

Registered R9596.50  
 Date Nov 27, 2023  
 Engineering and Inspection Services

Registered by

UNDER THE AUTHORITY OF THE  
 PUBLIC SAFETY ACT AND  
 THE BOILER, PRESSURE VESSEL AND  
 COMPRESSED GAS REGULATION

# ACI Central Inc.

20 McAulay Court, Charlottetown, PE C1A 9M7  
 P.O. Box 53, Charlottetown, PE C1A 7K1. Phone: 902-566-1975, Fax: 902-566-3133

## Recommendation to Register – Pressure Vessel Design

**To:** Blair Rawlings

**Date:** 11/21/2023

**From:** ACI Central Inc.

**Manufacturer:** Watson McDaniel Company  
 428 Jones Blvd.  
 Pottstown, PA 19464

**Manufacturer #:** PV-1188

**Subject: ACI Central Design Review**

The product described on this form has satisfied the requirements for review of pressure vessel designs established by the Directors of ACI Central at their September 1994 meeting in Moncton, New Brunswick. We recommend this design be registered in your Jurisdiction under;

**CRN: R9596.5**

Unit Description	Drawing Number	Service	Design Code
Pressure Vessel	2320400 RevX, 1582400 RevD	Non Lethal	ASME Sect VIII Div. 1
<b>Shell Side</b>		<b>Tube Side</b>	
<b>MAWP @ TEMP</b>	<b>MDMT @ MAWP</b>	<b>MAWP @ TEMP</b>	<b>MDMT @ MAWP</b>
250 PSI/FV @ 650 F	0 F @ 250 PSI		

Test Pressure: Hydro: 325 PSI    Pneu:	Test Pressure: Hydro:                      Pneu:
----------------------------------------	--------------------------------------------------

Part	Material	Des. t"	Act. t"	CA"	% EF	RT	PWHT	Dimensions	Notes
Shell	SA 53 B	0.219	0.250	0.025	85			OD": 16"	
Head	SA 516 70	0.235	0.250	0.025	85			OAL":	
Head	SA 516 70	1.482	1.500	0.025	100			W":	
Cover	SA 216 WCB	0.750	0.750	0.025	100			H": 29.31"	
								HS FT":	

- Notes:**
- 1- The return of this form, bearing the signature and stamp of the Jurisdiction will legally establish the CRN shown on this form.
  - 2- A copy of the Design bearing the CRN will be sent to the Manufacturer.
  - 3- Details including service conditions will be posted on the 'Silent Inspector' Bulletin Board.
  - 4- Copies of the Design and Specifications are available to ACIC Members on demand.
  - 5- The form will be a permanent ACIC record.
  - 6- To reduce turnaround times to a minimum fax your response to 902-566-3133.

**ACIC Log#:** 34828  
**Description:** Pressure Vessel, 16" OD  
 ASME Stamp, National Board Registered

This space is for Jurisdictional stamp and signature



# ACI Central Inc.

20 McAulay Court, Charlottetown, PE C1A 9M7  
 P.O. Box 53, Charlottetown, PE C1A 7K1. Phone: 902-566-1975, Fax: 902-566-3133

## Recommendation to Register – Pressure Vessel Design

To: Matthias Mailman

Date: 11/21/2023

From: ACI Central Inc.

Manufacturer: Watson McDaniel Company  
 428 Jones Blvd.  
 Pottstown, PA 19464

Manufacturer #: PV-1188

**Subject: ACI Central Design Review**

The product described on this form has satisfied the requirements for review of pressure vessel designs established by the Directors of ACI Central at their September 1994 meeting in Moncton, New Brunswick. We recommend this design be registered in your Jurisdiction under:

**CRN: R9596.5**

Unit Description	Drawing Number	Service	Design Code
Pressure Vessel	2320400 RevX, 1562400 RevD	Non Lethal	ASME Sect VIII Div. 1

Shell Side		Tube Side	
MAWP @ TEMP	MDMT @ MAWP	MAWP @ TEMP	MDMT @ MAWP
250 PSI/FV @ 650 F	0 F @ 250 PSI		

Test Pressure: Hydro: 325 PSI    Pneu:	Test Pressure: Hydro:                      Pneu:
----------------------------------------	--------------------------------------------------

Part	Material	Des. t"	Act. t"	CA"	% EF	RT	PWHT	Dimensions	Notes
Shell	SA 53 B	0.219	0.250	0.025	85			OD": 16"	
Head	SA 516 70	0.235	0.250	0.025	85			OAL":	
Head	SA 516 70	1.482	1.500	0.025	100			W":	
Cover	SA 216 WCB	0.750	0.750	0.025	100			H": 29.31"	
								HS FT":	


**Notes:**

- 1- The return of this form, bearing the signature and stamp of the Jurisdiction will legally establish the CRN shown on this form.
- 2- A copy of the Design bearing the CRN will be sent to the Manufacturer.
- 3- Details including service conditions will be posted on the 'Silent Inspector' Bulletin Board.
- 4- Copies of the Design and Specifications are available to ACIC Members on demand.
- 5- The form will be a permanent ACIC record.
- 6- To reduce turnaround times to a minimum fax your response to 902-566-3133.

**ACIC Log#:** 34828

**Description:** Pressure Vessel, 16" OD  
 ASME Stamp, National Board Registered

This space is for Jurisdictional stamp and signature



Northwest Territories

REGISTERED  
 UNDER THE AUTHORITY OF  
 THE BOILER AND PRESSURE  
 VESSEL ACT.

C.R.N. R9596.5T

SIGNED Lance Beaulieu

DATE Nov 27/23

82.00

# ACI Central Inc.

20 McAulay Court, Charlottetown, PE C1A 9M7  
 P.O. Box 53, Charlottetown, PE C1A 7K1. Phone: 902-566-1975, Fax: 902-566-3133

## Recommendation to Register – Pressure Vessel Design

**To:** Muhammad Wani

**Date:** 11/21/2023

**From:** ACI Central Inc.

**Manufacturer:** Watson McDaniel Company  
 428 Jones Blvd.  
 Pottstown, PA 19464

**Manufacturer #:** PV-1188

**Subject: ACI Central Design Review**

The product described on this form has satisfied the requirements for review of pressure vessel designs established by the Directors of ACI Central at their September 1994 meeting in Moncton, New Brunswick. We recommend this design be registered in your Jurisdiction under:

**CRN: R9596.5**

Unit Description	Drawing Number	Service	Design Code
Pressure Vessel	2320400 RevX, 1562400 RevD	Non Lethal	ASME Sect VIII Div. 1

Shell Side		Tube Side	
MAWP @ TEMP	MDMT @ MAWP	MAWP @ TEMP	MDMT @ MAWP
250 PSI/FV @ 650 F	0 F @ 250 PSI		

Test Pressure: Hydro: 325 PSI    Pneu:	Test Pressure: Hydro:                      Pneu:
----------------------------------------	--------------------------------------------------

Part	Material	Des. t"	Act. t"	CA"	% EF	RT	PWHT	Dimensions	Notes
Shell	SA 53 B	0.219	0.250	0.025	85			OD": 16"	
Head	SA 516 70	0.235	0.250	0.025	85			OAL":	
Head	SA 516 70	1.482	1.500	0.025	100			W":	
Cover	SA 216 WCB	0.750	0.750	0.025	100			H": 29.31"	
								HS FT²:	


**Notes:**

- 1- The return of this form, bearing the signature and stamp of the Jurisdiction will legally establish the CRN shown on this form.
- 2- A copy of the Design bearing the CRN will be sent to the Manufacturer.
- 3- Details including service conditions will be posted on the 'Silent Inspector' Bulletin Board.
- 4- Copies of the Design and Specifications are available to ACIC Members on demand.
- 5- The form will be a permanent ACIC record.
- 6- To reduce turnaround times to a minimum fax your response to 902-566-3133.

**ACIC Loc#:** 34828

**Description:** Pressure Vessel, 16" OD  
 ASME Stamp, National Board Registered

This space is for Jurisdictional stamp and signature



**NUNAVUT**

Boiler and  
Pressure Vessels Act

**REGISTERED**

CRN R9596.5N

Date 2023-11-24

Signed [Signature]

Chief Inspector

Territorial Registration Fee

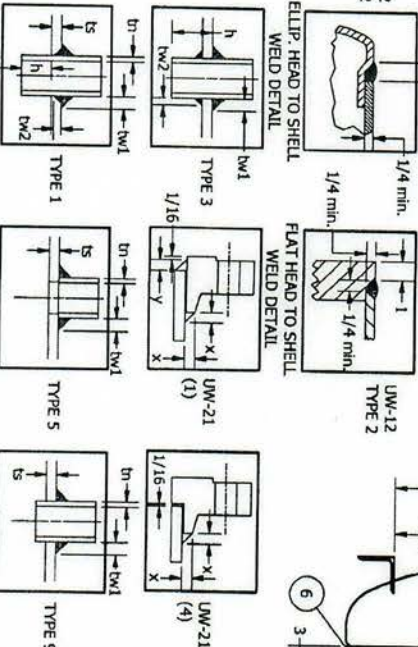
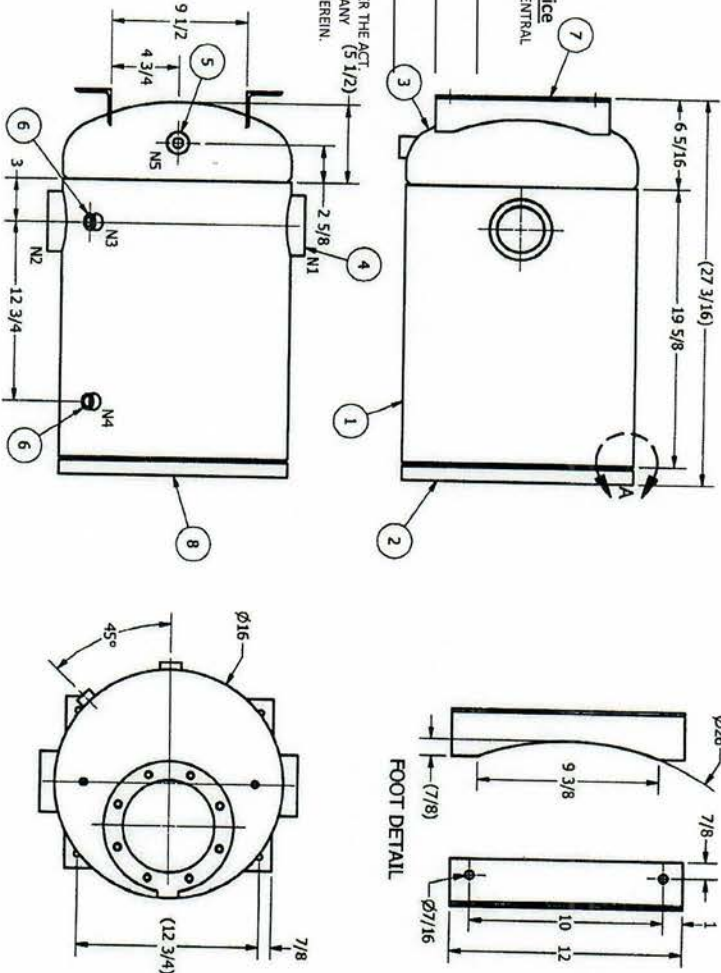
MARK	SERVICE	MPS	TYPE	MATERIAL	WELD	h	Hole Diameter	Chamber
N1	COND INLET	3	HAIF COUPLING, 3000# NPT	SA-105	3	1.88	2.50	5.00
N2	COND OUTLET	3	HAIF COUPLING, 3000# NPT	SA-105	3	1.88	2.50	5.00
N3	GAUGE GLASS	1/2	HAIF COUPLING, 6000# NPT	SA-105	9	2.50		0
N4	GAUGE GLASS	1/2	HAIF COUPLING, 6000# NPT	SA-105	9	2.50		0
N5	DRAIN	1/2	FULL COUPLING, 6000# NPT	SA-105	9	2.50		0

ITEM #	PART #	DESCRIPTION	QTY	TRACEABILITY
1	2188001	PIPE, NPS 16" X SCH 10, SA-538 ERW	19.625"	MTR
2	2188001	FLAT HEAD, MACHINED, 16" OD PMP TOP	1	MTR
3	1598703	HEAD, 2:1 ELLIP 16", SA-516 GR 70	1	MTR
4	2159810	HAIF COUPLING, 3" NPT 3000# SA-105	2	CERT OF CONF
5	2186503	FULL COUPLING, 1/2" NPT 6000# SA-105	1	CERT OF CONF
6	2186403	HAIF COUPLING, 1/2" NPT 6000# SA-105	2	CERT OF CONF
7	2102300	ROOT, ANGLE 2:1/2EQ, SA-36 (SEE DETAIL)	2	CERT OF CONF
8	2102300	DATA/PLATE, ASME PRESSURE VESSEL	1	

- NOTES:
- SEE 2320401 REV W FOR ASME CALCULATIONS
  - VESSEL TO BE DESIGNED, FABRICATED, INSPECTED AND TESTED PER ASME SECTION VIII, DIVISION 1, LATEST EDITION (2021), UM STAMP
  - PRESSURE: PV TO 250 PSIG AT 650°F  
TEMPERATURE: 0°F TO 650°F AT 250 PSIG  
CORROSION ALLOWANCE: .025"
  - NOMINAL SHELL THICKNESS: 0.25  
MINIMUM TOP HEAD THICKNESS: 1.482  
MINIMUM BOTTOM HEAD THICKNESS: 0.23  
NOZZLES SHALL BE HORIZONTAL / VERTICAL WITHIN 2°
  - ALL DIMENSIONS ARE +/- 1/8"
  - USE WELD PROCEDURE P1-1205, P1-5242 & P1-1047 FOR ALL P1 TO P1 WELDS
  - USE WELD PROCEDURE P8P1-1046 FOR ALL P8 TO P1 WELDS
  - HYDROSTATICALLY TEST AT 325 PSIG
  - HEADS (ITEMS 2 & 3) TO SHELL WELD SHALL BE A FULL PENETRATION WELD PER TABLE UW12 TYPE 2
  - THE OUTSIDE EDGE OF THE FLAT HEAD SHALL BE EXAMINED BY LIQUID PENETRANT OR MAGNETIC PARTICLE INSPECTION. THE MATERIAL SHALL BE FREE OF IMPERFECTIONS.

ACI Central Registration Notice  
 AUTHORIZED BY THE DIRECTORS OF ACI CENTRAL  
 CRN: R9596.59870YTN  
 DATE: Dec. 6, 2023  
 FILE: PV-1188

REGISTRATION IS A LEGAL REQUIREMENT UNDER THE ACT.  
 IT DOES NOT RELIEVE THE MANUFACTURER OF ANY  
 RESPONSIBILITY FOR THE PRODUCT DETAILED HEREIN.



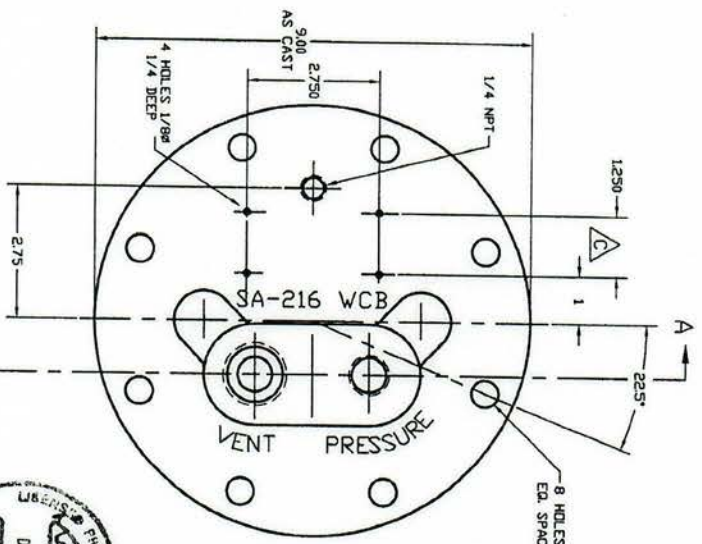
Dimensional Tolerances Unless Otherwise Specified  
 Machining  
 1. Face: ±1/64, Angles: ±1°  
 2. Hole: ±0.010, 3. Hole: ±0.005  
 4. Hole: ±0.010, 5. Hole: ±0.005  
 6. Hole: ±0.010, 7. Hole: ±0.005  
 8. Hole: ±0.010, 9. Hole: ±0.005  
 10. Hole: ±0.010, 11. Hole: ±0.005  
 12. Hole: ±0.010, 13. Hole: ±0.005  
 14. Hole: ±0.010, 15. Hole: ±0.005  
 16. Hole: ±0.010, 17. Hole: ±0.005  
 18. Hole: ±0.010, 19. Hole: ±0.005  
 20. Hole: ±0.010, 21. Hole: ±0.005  
 22. Hole: ±0.010, 23. Hole: ±0.005  
 24. Hole: ±0.010, 25. Hole: ±0.005  
 26. Hole: ±0.010, 27. Hole: ±0.005  
 28. Hole: ±0.010, 29. Hole: ±0.005  
 30. Hole: ±0.010, 31. Hole: ±0.005  
 32. Hole: ±0.010, 33. Hole: ±0.005  
 34. Hole: ±0.010, 35. Hole: ±0.005  
 36. Hole: ±0.010, 37. Hole: ±0.005  
 38. Hole: ±0.010, 39. Hole: ±0.005  
 40. Hole: ±0.010, 41. Hole: ±0.005  
 42. Hole: ±0.010, 43. Hole: ±0.005  
 44. Hole: ±0.010, 45. Hole: ±0.005  
 46. Hole: ±0.010, 47. Hole: ±0.005  
 48. Hole: ±0.010, 49. Hole: ±0.005  
 50. Hole: ±0.010, 51. Hole: ±0.005  
 52. Hole: ±0.010, 53. Hole: ±0.005  
 54. Hole: ±0.010, 55. Hole: ±0.005  
 56. Hole: ±0.010, 57. Hole: ±0.005  
 58. Hole: ±0.010, 59. Hole: ±0.005  
 60. Hole: ±0.010, 61. Hole: ±0.005  
 62. Hole: ±0.010, 63. Hole: ±0.005  
 64. Hole: ±0.010, 65. Hole: ±0.005  
 66. Hole: ±0.010, 67. Hole: ±0.005  
 68. Hole: ±0.010, 69. Hole: ±0.005  
 70. Hole: ±0.010, 71. Hole: ±0.005  
 72. Hole: ±0.010, 73. Hole: ±0.005  
 74. Hole: ±0.010, 75. Hole: ±0.005  
 76. Hole: ±0.010, 77. Hole: ±0.005  
 78. Hole: ±0.010, 79. Hole: ±0.005  
 80. Hole: ±0.010, 81. Hole: ±0.005  
 82. Hole: ±0.010, 83. Hole: ±0.005  
 84. Hole: ±0.010, 85. Hole: ±0.005  
 86. Hole: ±0.010, 87. Hole: ±0.005  
 88. Hole: ±0.010, 89. Hole: ±0.005  
 90. Hole: ±0.010, 91. Hole: ±0.005  
 92. Hole: ±0.010, 93. Hole: ±0.005  
 94. Hole: ±0.010, 95. Hole: ±0.005  
 96. Hole: ±0.010, 97. Hole: ±0.005  
 98. Hole: ±0.010, 99. Hole: ±0.005  
 100. Hole: ±0.010, 101. Hole: ±0.005

**Watson McDaniel**  
 438 Jones Boulevard  
 Lincolnton, NC 28135  
 Phone: (704) 495-5131  
 Fax: (704) 495-5134  
 www.watsonmcdaniel.com

**PMPF TANK, 250PSI, CARBON STEEL**

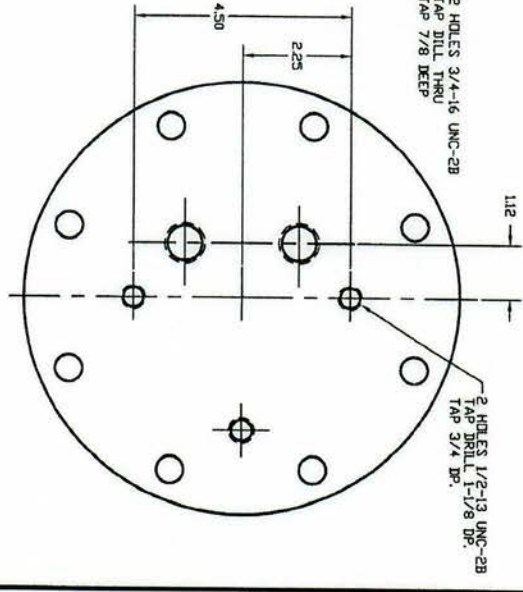
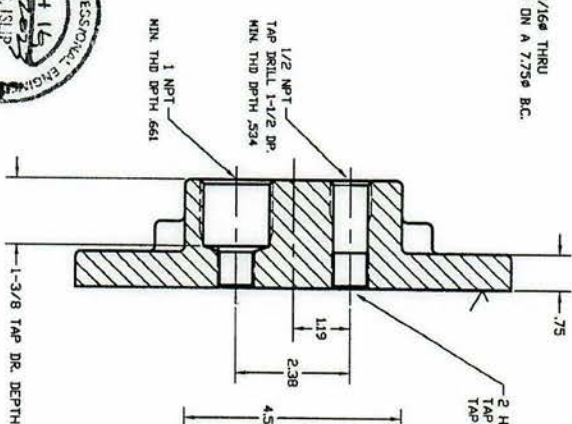
Drawn: KO  
 Checked: GE  
 Date: 11/27/2021  
 Size: B  
 Drawing No.: 2320400  
 Rev: X





ACI Central Registration Notice  
 AUTHORIZED BY THE DIRECTORS OF ACI CENTRAL  
 CRN: R9596.59870YTN  
 DATE: Dec. 6, 2023  
 FILE: PV-1188

REGISTRATION IS A LEGAL REQUIREMENT UNDER THE ACT.  
 IT DOES NOT RELIEVE THE MANUFACTURER OF ANY  
 RESPONSIBILITY FOR THE PRODUCT DETAILED HEREIN.



SECTION A-A

MATERIAL: CAST STEEL ASTM A 216-89 WCB  
 NOTE: FOR CASTING DRAWING, SEE 0193900

REV	DESCRIPTION	DATE	BY	Dimensional Tolerances Unless Otherwise Specified
D	SEC. CR. 83579	3/26/97	RL	Machine: ±1/64", Angles: ±1° Finish: Two Pass A.D.I., Three Pass 3.000 Dimensional Surface Finish: 32 or Better
C	CR. 856	3/26/97	RL	Machine: ±1/64", Angles: ±1° Finish: Two Pass A.D.I., Three Pass 3.000 Dimensional Surface Finish: 32 or Better
B	SEC. CR. 8674	3/26/97	RL	Machine: ±1/64", Angles: ±1° Finish: Two Pass A.D.I., Three Pass 3.000 Dimensional Surface Finish: 32 or Better
A				

DATE	3/26/97
BY	RL
DATE	3/26/97
BY	RL

DATE	3/26/97
BY	RL
DATE	3/26/97
BY	RL

DATE	3/26/97
BY	RL
DATE	3/26/97
BY	RL

**COVER, PMP**

15662400